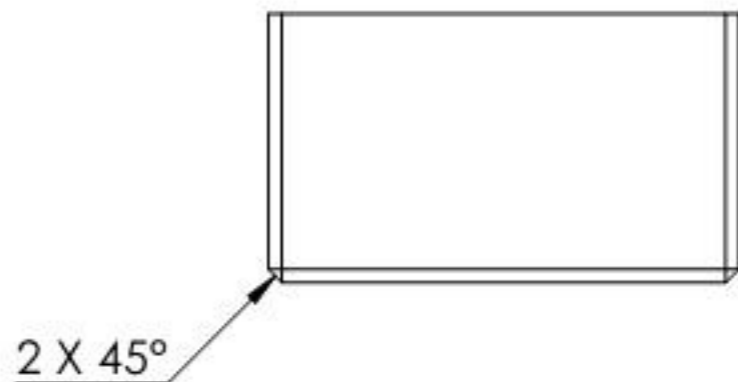
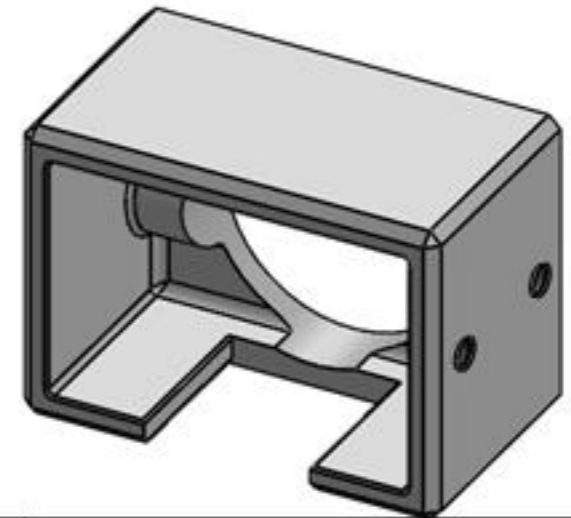
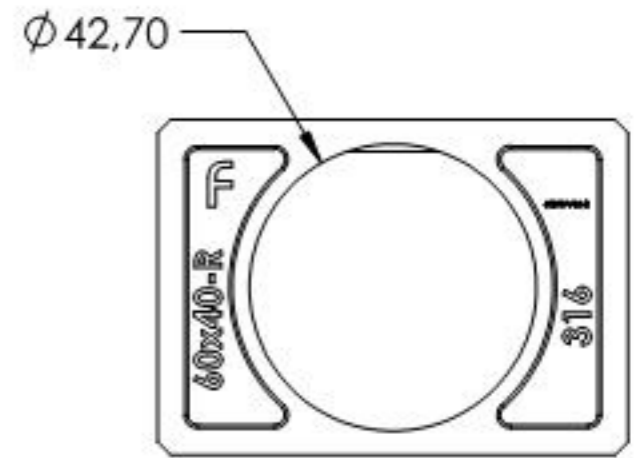
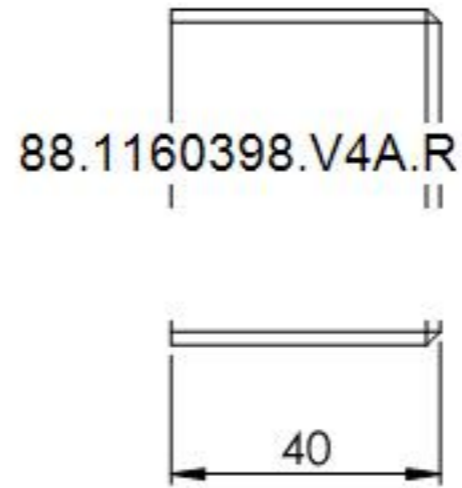
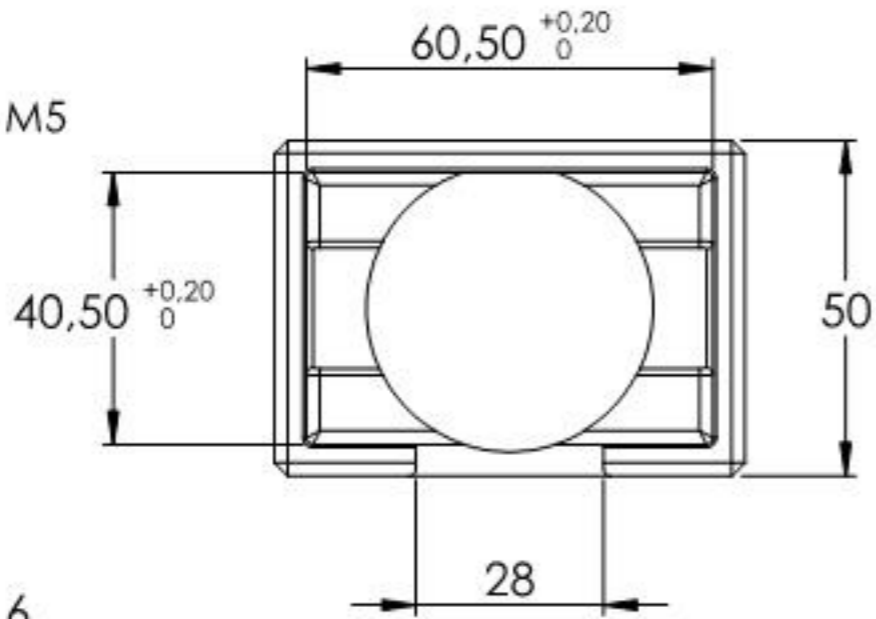
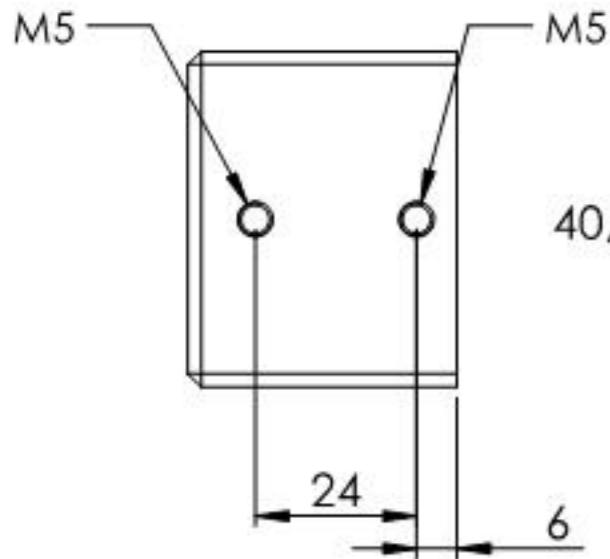
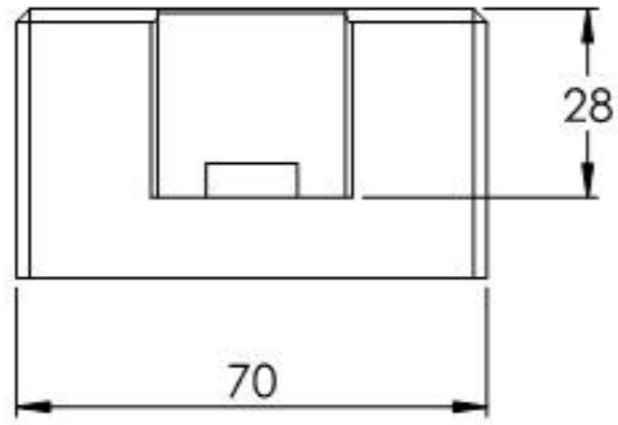
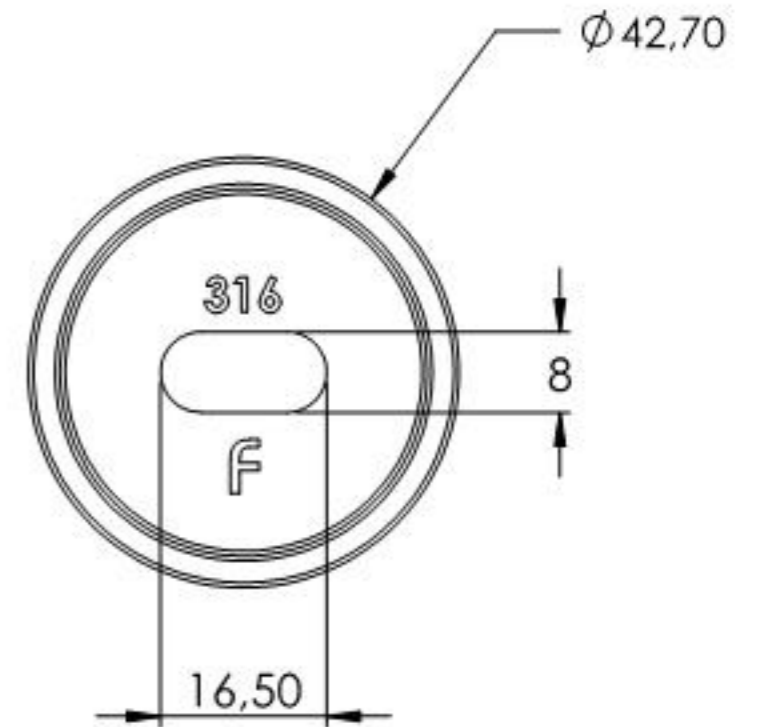
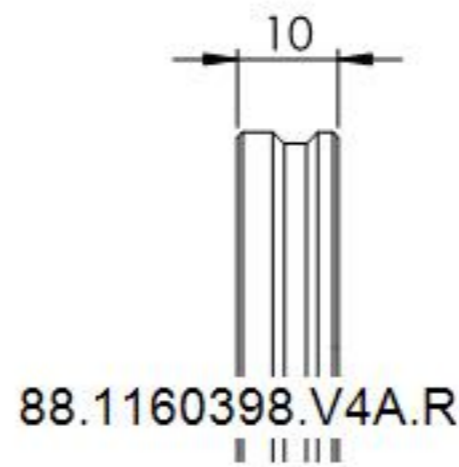
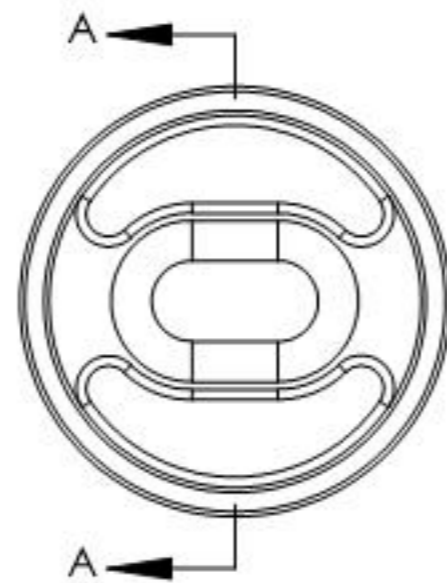
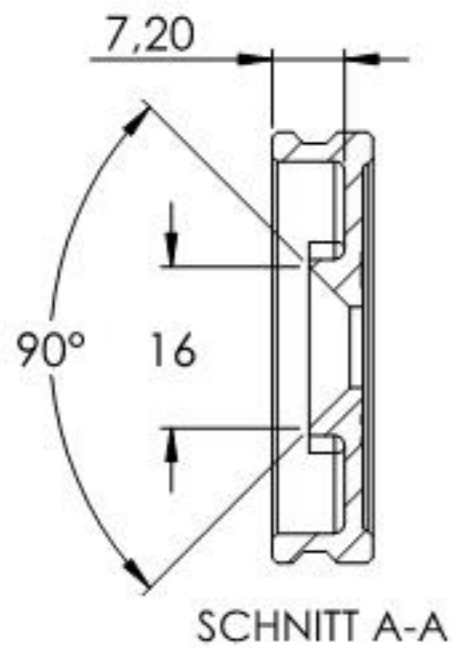
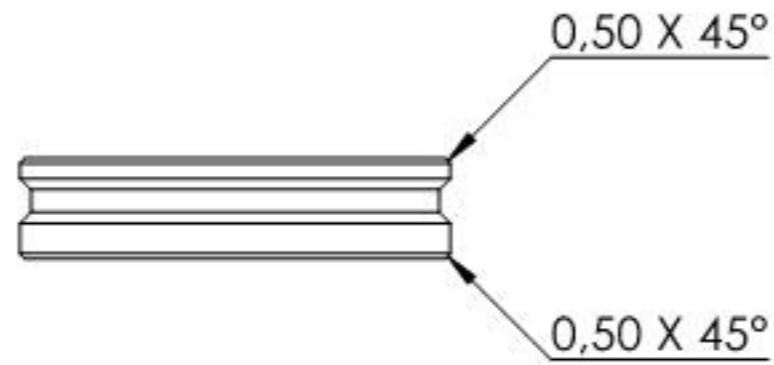


Name	Signatur	Datum	Artikelnummer	Oberfläche: Geschliffen Korn 240
Ch. Höfig	CH	07.05.2019	60398-V4A-R	
Werkstoff:		Hersteller		Blattformat
1.4401/04 (X5CrNiMo17-12-2)		 <small>EDLSTAHL-ALUMINIUM-SCHWEIßSTEIN</small>		A4
Gewicht 0.401 kg		Maßstab: 1:1,5	Version: 1	Blatt 1 von 4



Name	Signatur	Datum	Artikelnummer	Oberfläche: Geschliffen Korn 240
Ch. Höfig	CH	07.05.2019	60398-V4A-R Teil1	
Werkstoff:		Hersteller		Blattformat
1.4401/04 (X5CrNiMo17-12-2)				A4
Gewicht 0.351 kg		Maßstab: 1:1.5	Version: 1	Blatt 2 von 4



Name	Signatur	Datum	Artikelnummer	Oberfläche: Roh
Ch. Höfig	CH	07.05.2019	6039X-V4A-X Teil2	
Werkstoff:		Hersteller		Blattformat
1.4401/04 (X5CrNiMo17-12-2)		 <small>EDLSTAHLE · ALUMINIUM · SCHWEIßSTÄBE</small>		A4
Gewicht 0,047 kg		Maßstab: 1:1	Version: 1	Blatt 3 von 4