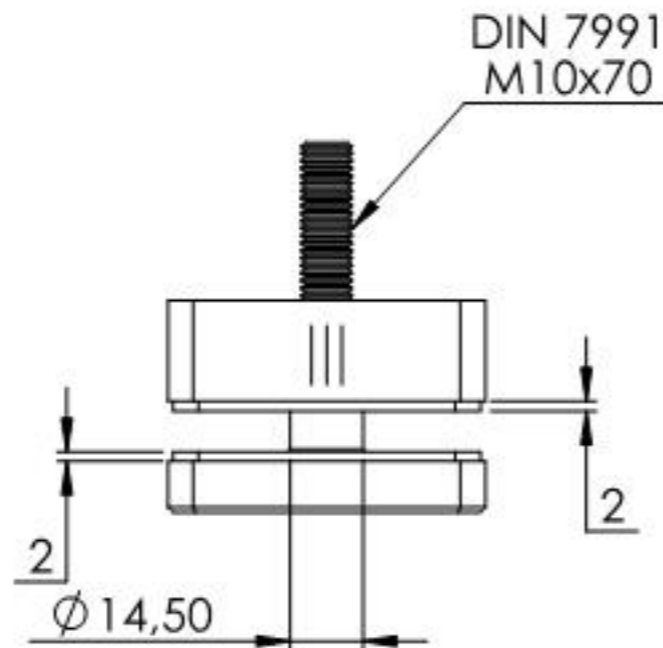
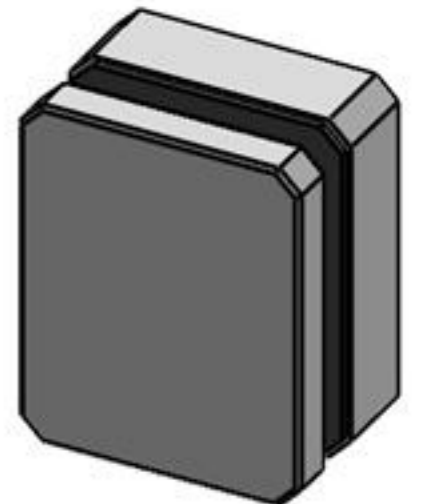
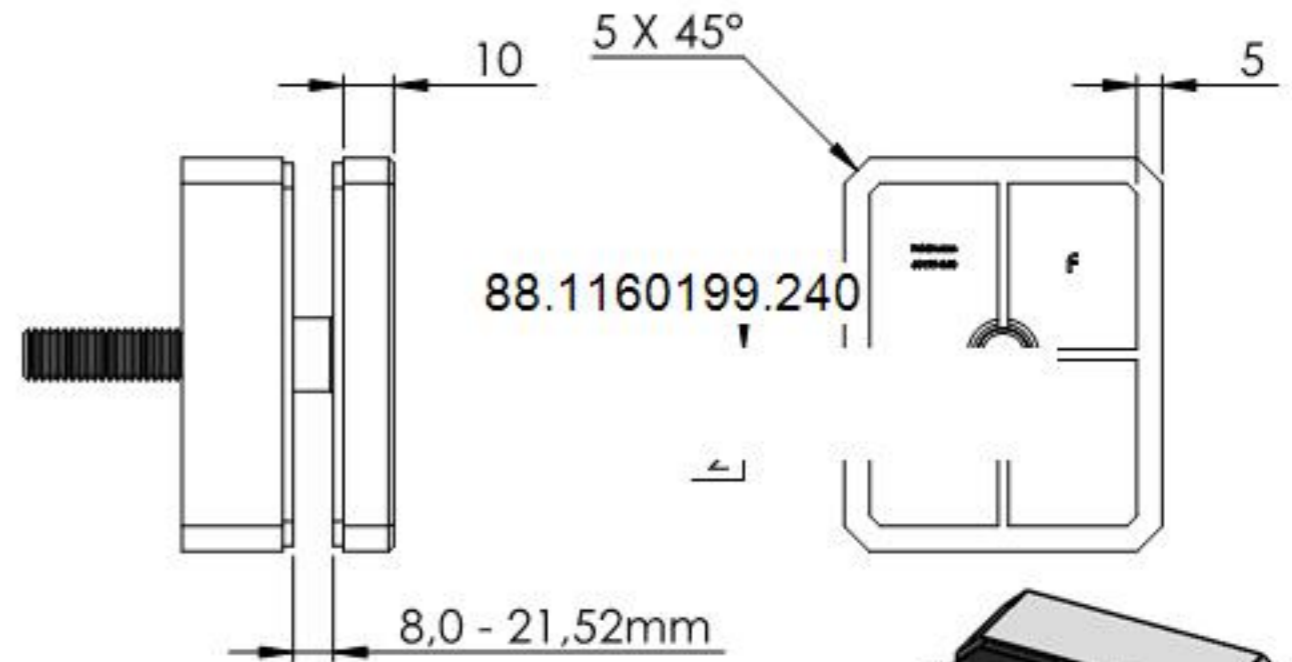
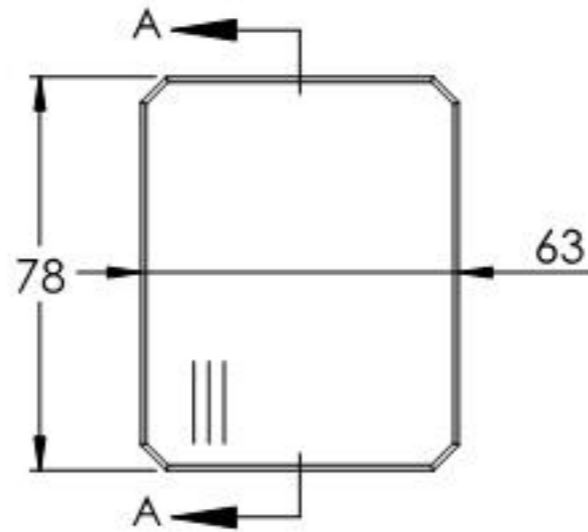
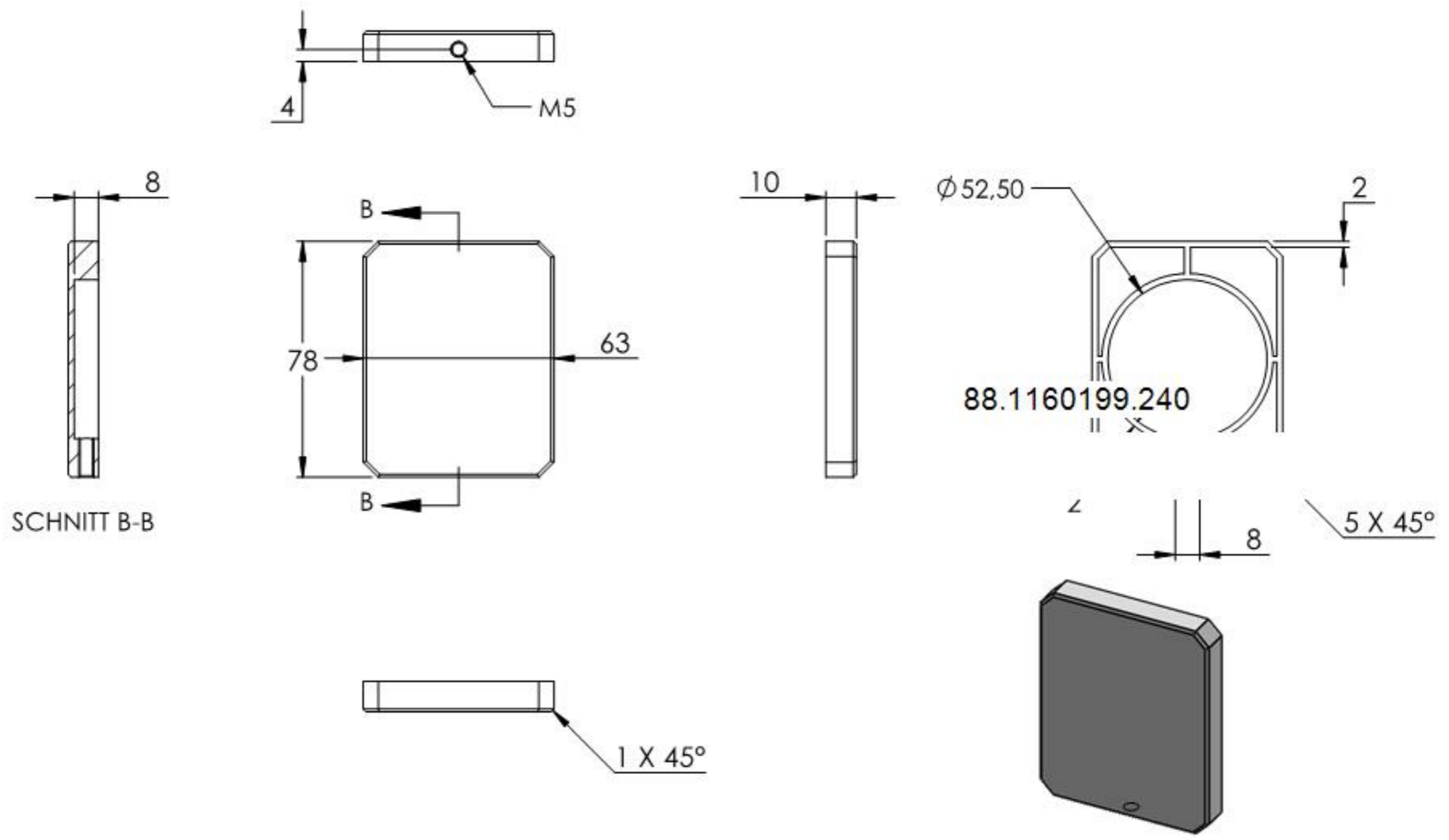


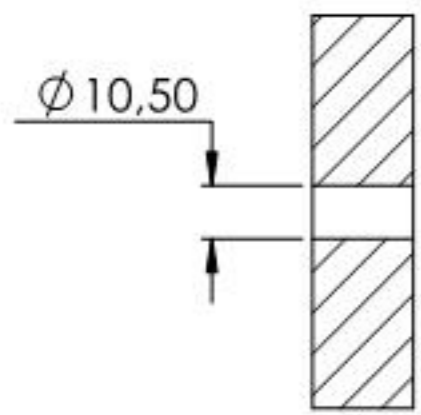
SCHNITT A-A



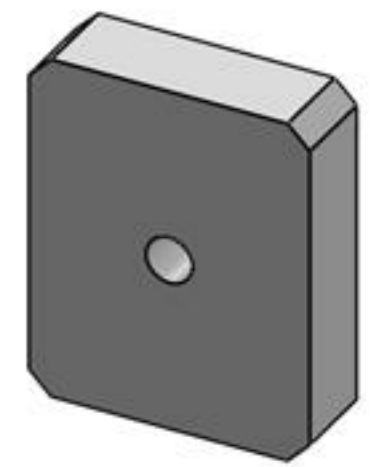
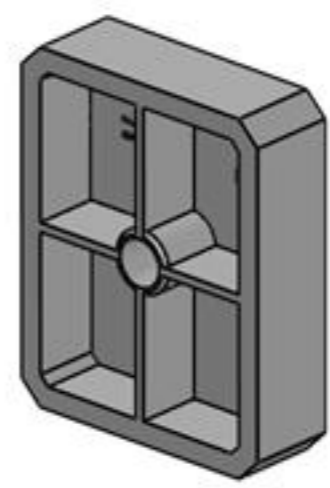
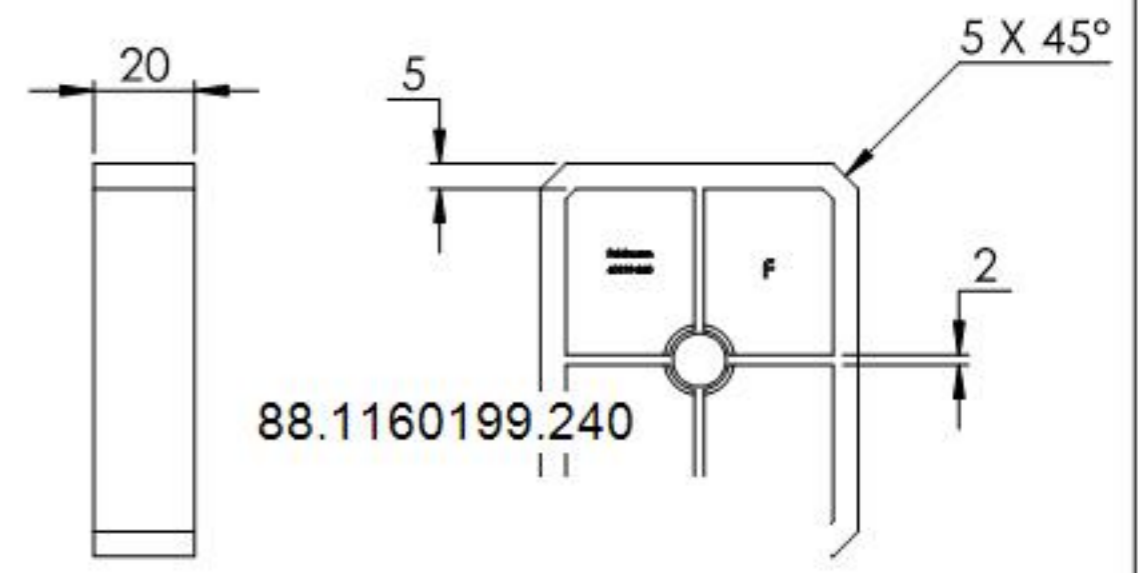
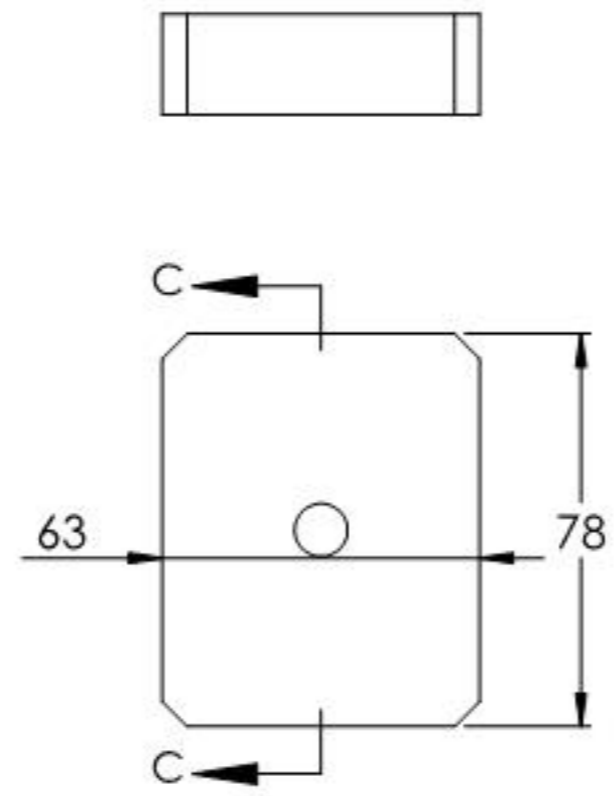
Name	Signatur	Datum	Artikelnummer	Oberfläche: Geschliffen Korn 240
Ch. Höfig	CH	03.11.2020	60199-240	
Werkstoff:		Hersteller		Blattformat
1.4301 (X5CrNi18-10)		 <b>Feldmann</b> <small>EDLSTAHL-ALUMINIUM-SCHWEIßSTEIN</small>		A4
Gewicht 0.651 kg		Maßstab: 1:2	Version: 1	Blatt 1 von 7



Name	Signatur	Datum	Artikelnummer	Oberfläche: Geschliffen Korn 240
Ch. Höfig	CH	03.11.2020	60199-240 Teil1	
Werkstoff:		Hersteller		Blattformat
1.4301 (X5CrNi18-10)		 <b>Feldmann</b> <small>EDLSTAHL-ALUMINIUM-SCHWEISSEN</small>		A4
Gewicht 0.135 kg		Maßstab: 1:2	Version: 1	Blatt 2 von 7



SCHNITT C-C



Name	Signatur	Datum	Artikelnummer	Oberfläche: Geschliffen Korn 240
Ch. Höfig	CH	03.11.2020	60199-240 Teil2	
Werkstoff:		Hersteller		Blattformat
1.4301 (X5CrNi18-10)		 <small>EDLSTAHL-ALUMINIUM-SCHWEIßSTEIN</small>		A4
Gewicht 0.369 kg		Maßstab: 1:2	Version: 1	Blatt 3 von 7