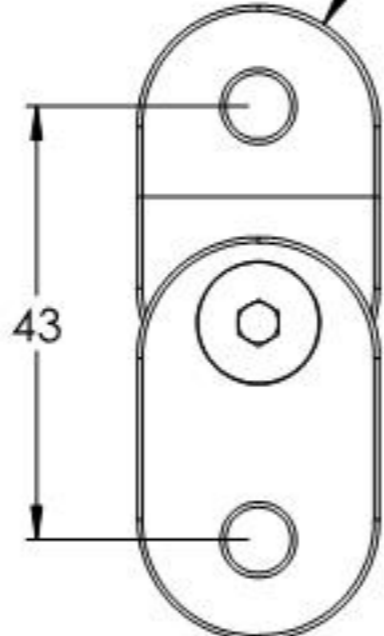
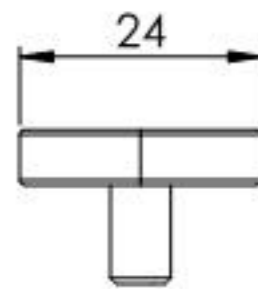
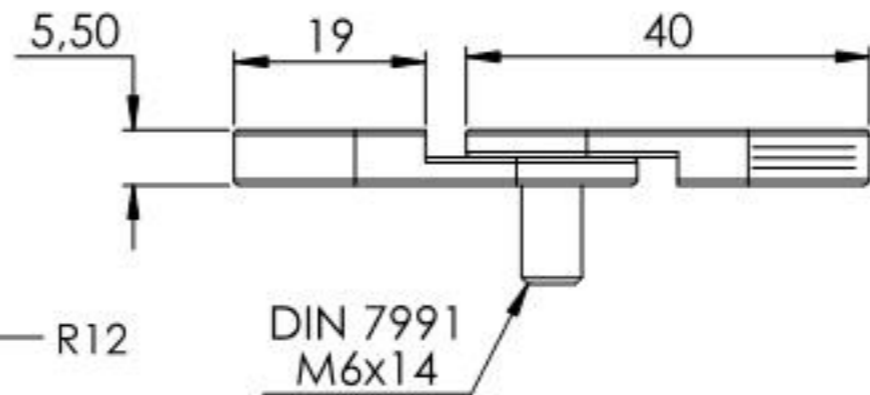
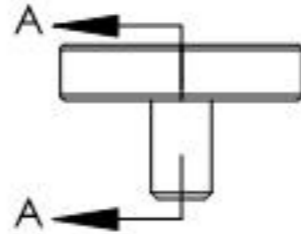
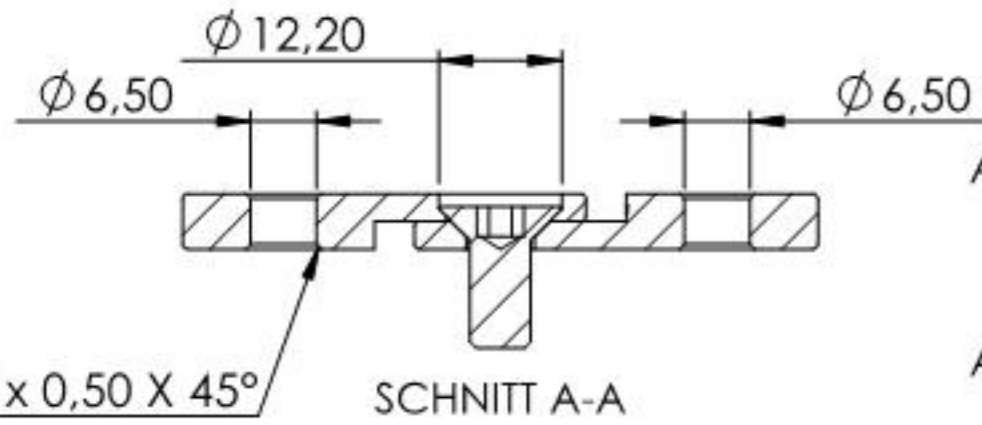
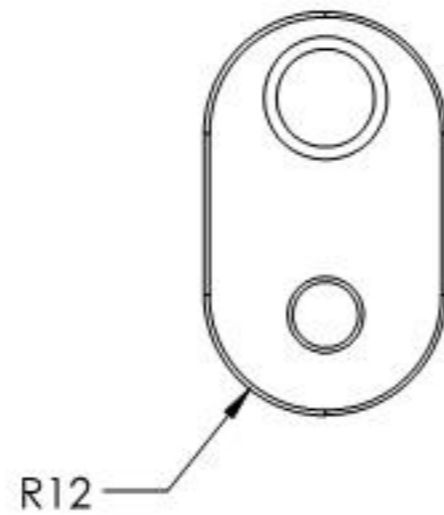
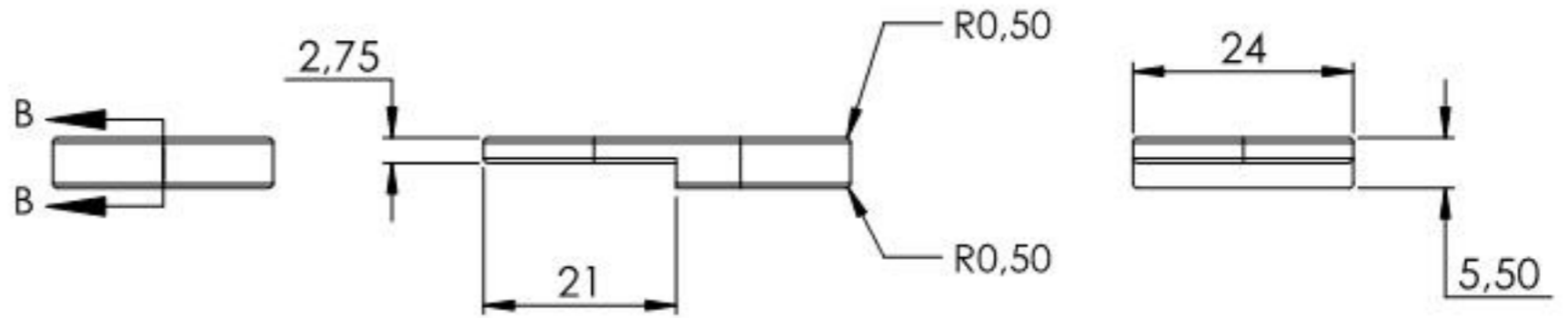
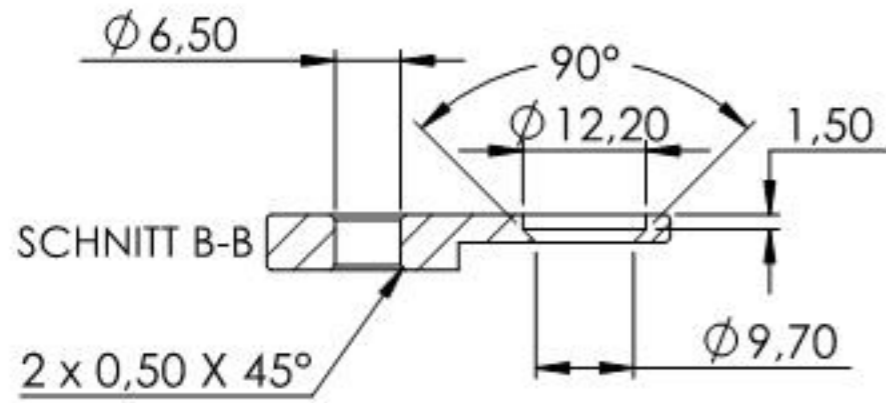
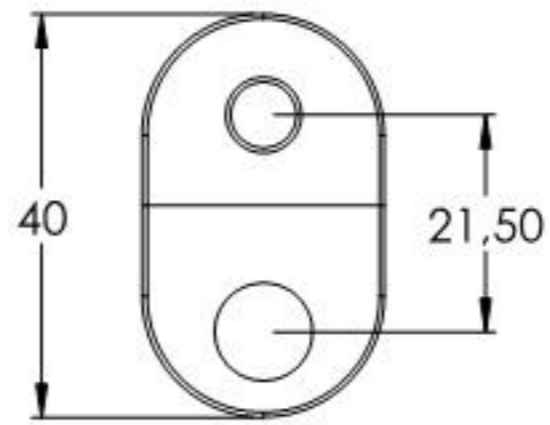


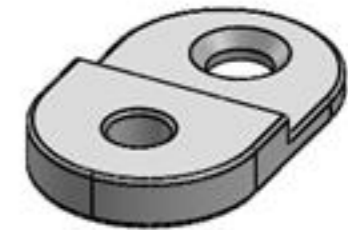
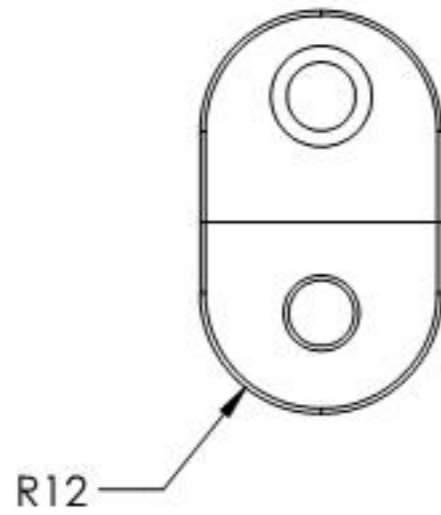
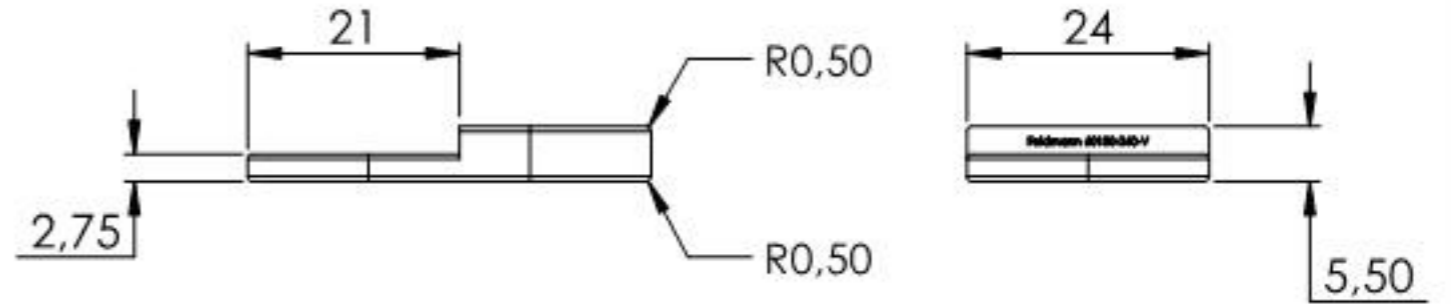
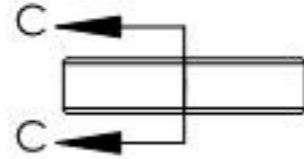
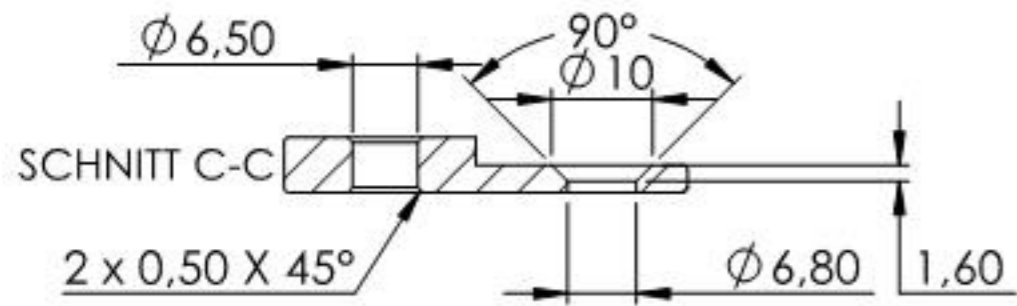
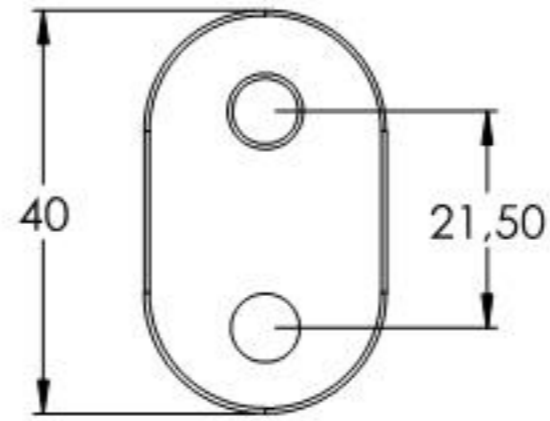
63



Name	Signatur	Datum	Artikelnummer	Oberfläche: Geschliffen Korn 240
Ch. Höfig	CH	20.01.2022	60180-240-V	
Werkstoff:				Blattformat
1.4301 (X5CrNi18-10)				A4
Gewicht 0,051 kg		Massstab: 1:1	Version: 1	Blatt 1 von 4



Name	Signatur	Datum	Artikelnummer	Oberfläche: Geschliffen Korn 240
Ch. Höfig	CH	20.01.2022	60180-240-V Teil1	
Werkstoff:				Blattformat
1.4301 (X5CrNi18-10)				A4
Gewicht 0,023 kg		Maßstab: 1:1	Version: 1	Blatt 2 von 4



Name	Signatur	Datum	Artikelnummer	Oberfläche: Geschliffen Korn 240
Ch. Höfig	CH	20.01.2022	60180-240-V Teil2	
Werkstoff:				Blattformat
1.4301 (X5CrNi18-10)				A4
Gewicht 0,024 kg		Maßstab: 1:1	Version: 1	Blatt 3 von 4