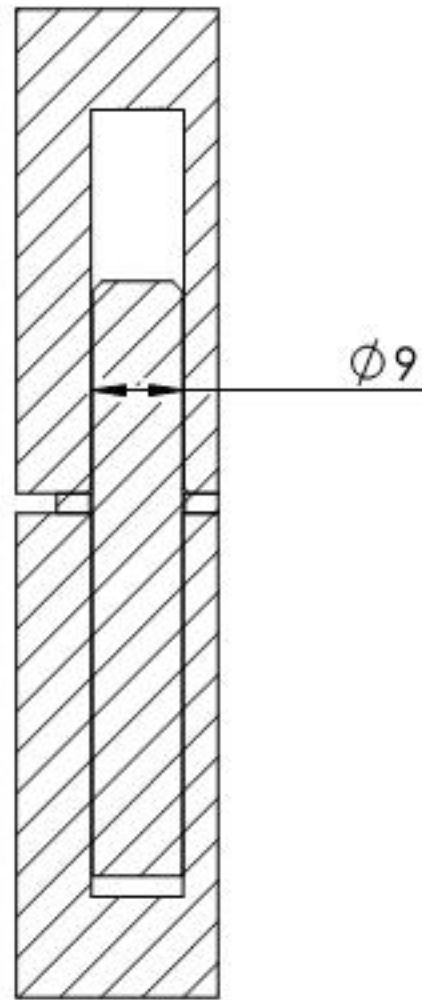
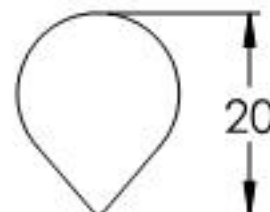
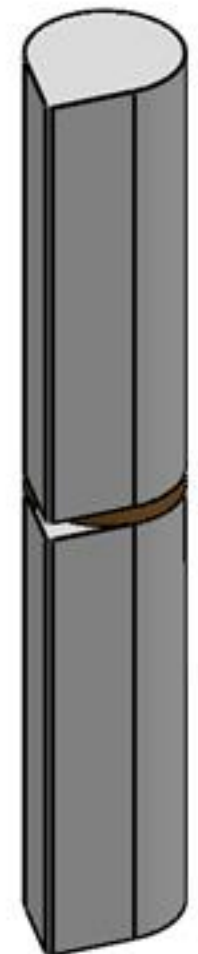
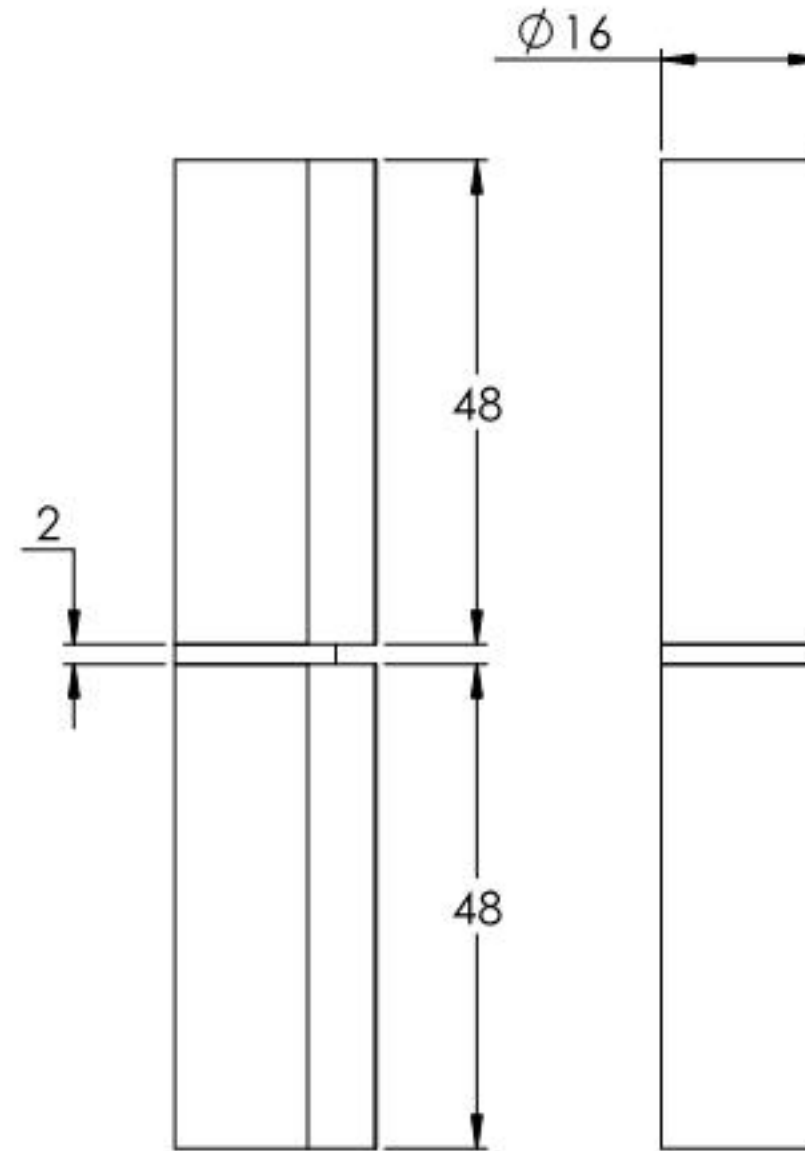
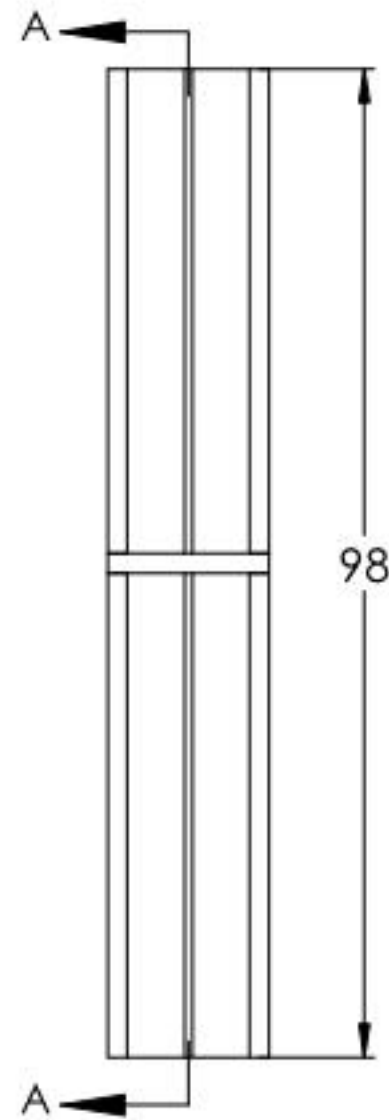


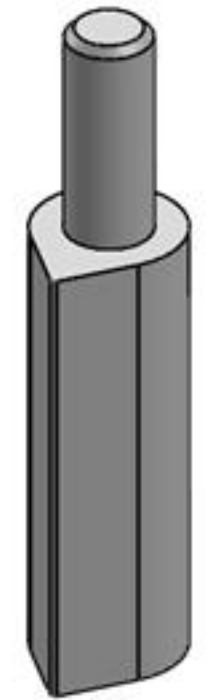
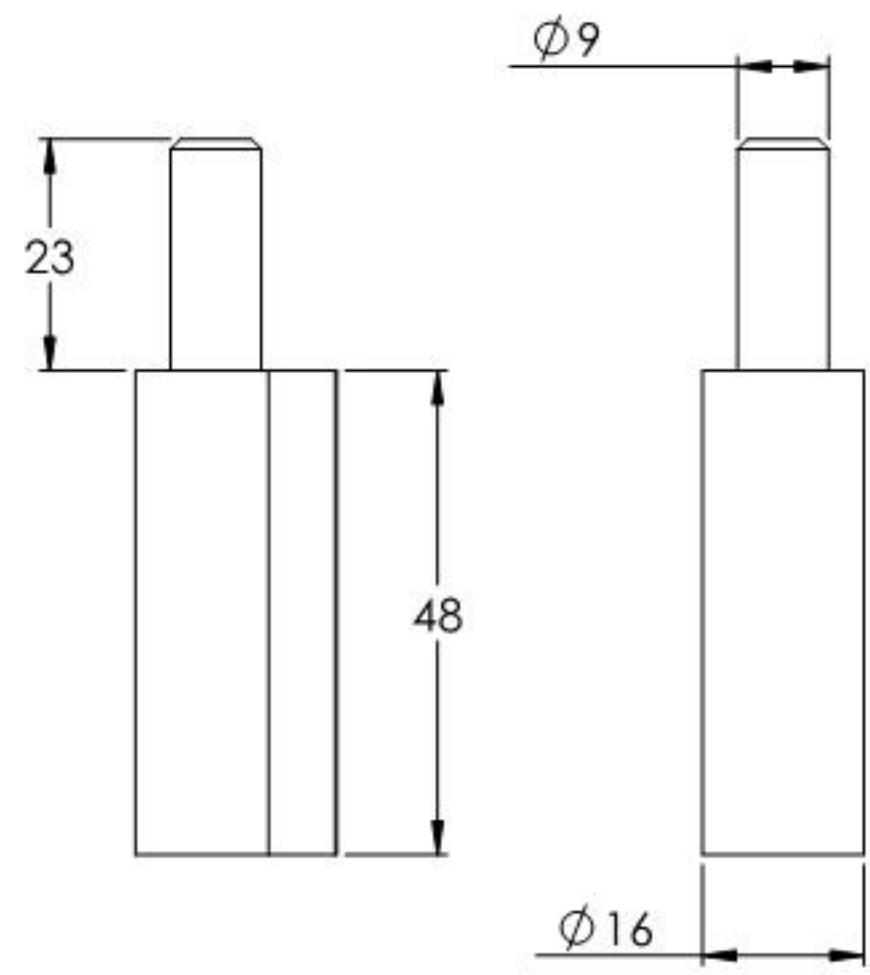
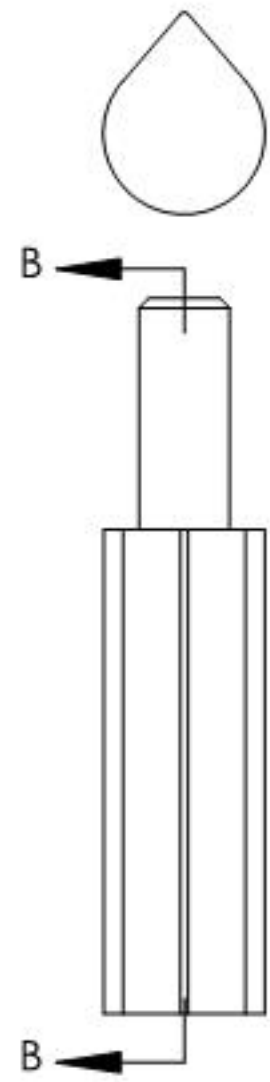
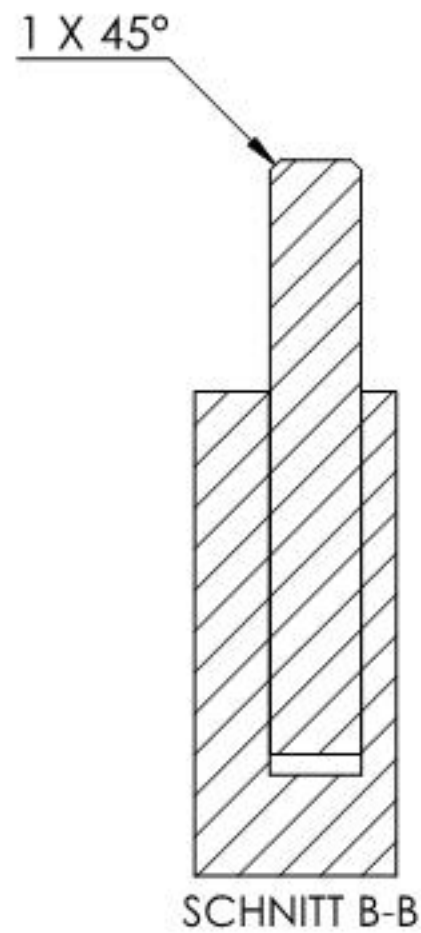
Tragkraft: 150kg
Gilt für 2 Bänder



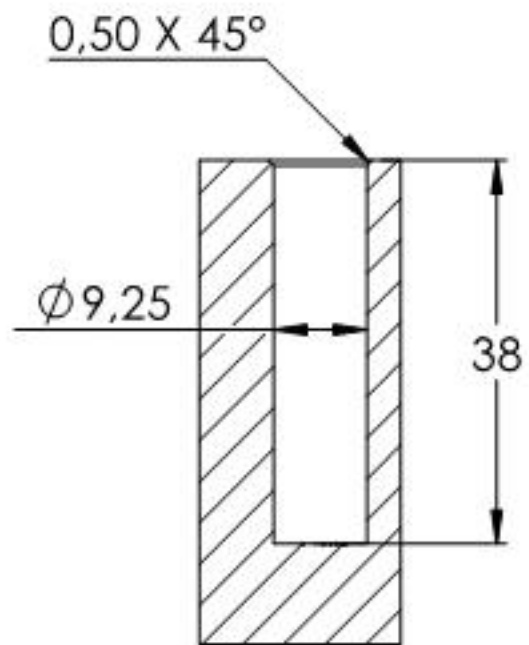
SCHNITT A-A



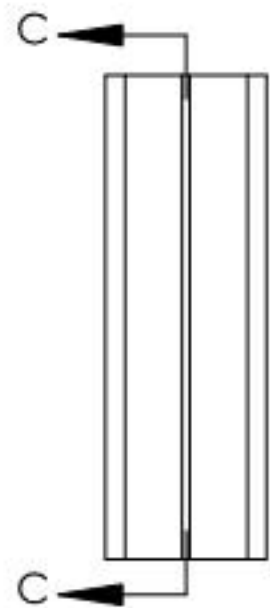
Name	Signatur	Datum	Artikelnummer	Oberfläche: Roh
Ch. Höfig	CH	08.09.2021	88.11560.100	
Werkstoff:				Blattformat
1.0037 (S235JR)				A4
Gewicht 0.037 kg		Massstab: 1:1	Version: 1	Blatt 1 von 5



Name	Signatur	Datum	Artikelnummer	Oberfläche: Roh
Ch. Höfig	CH	08.09.2021	ξ 88.11560.100	
Werkstoff:				Blattformat
1.0037 (S235JR)				A4
Gewicht 0.092 kg		Massstab: 1:1	Version: 1	Blatt 2 von 5



SCHNITT C-C



Name	Signatur	Datum	Artikelnummer	Oberfläche: Roh
Ch. Höfig	CH	08.09.2021	88.11560.100	
Werkstoff:				Blattformat
1.0037 (S235JR)				A4
Gewicht 0.063 kg		Maßstab: 1:1	Version: 1	Blatt 3 von 5