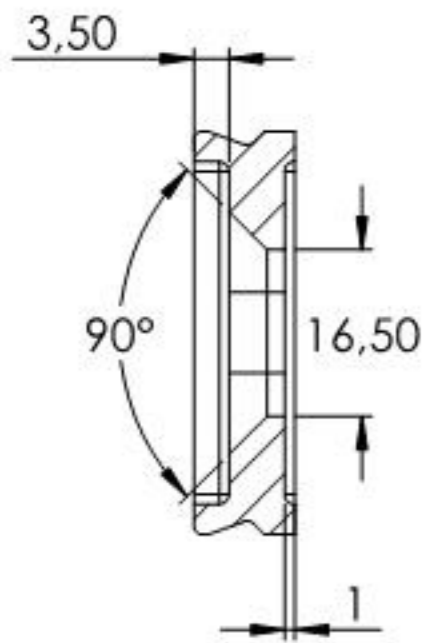
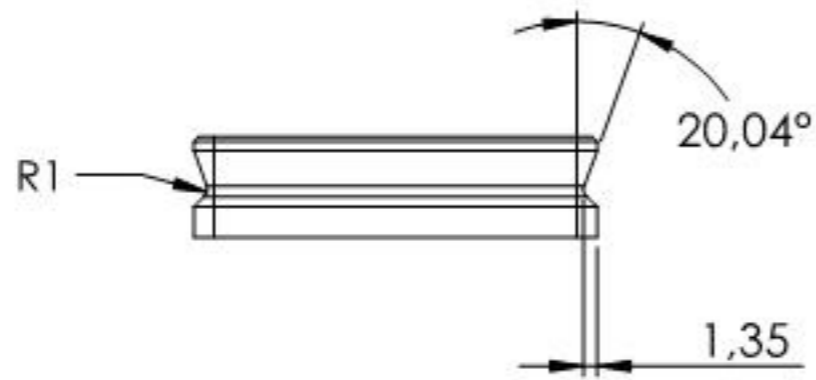
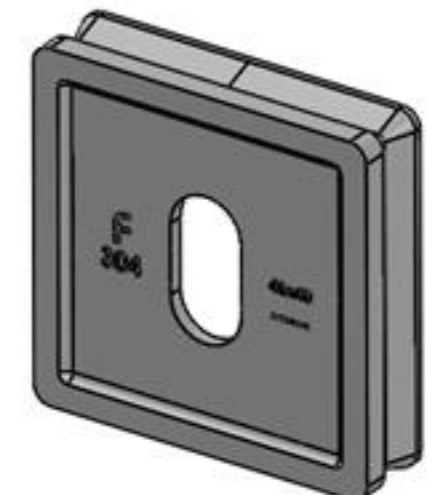
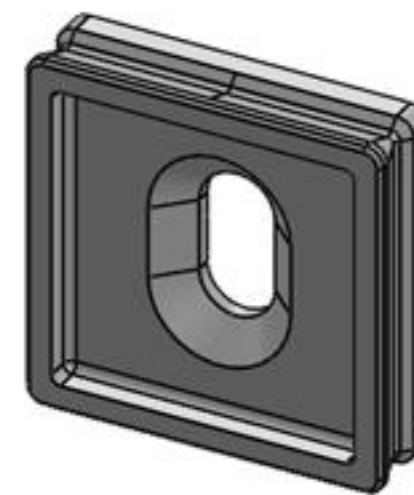
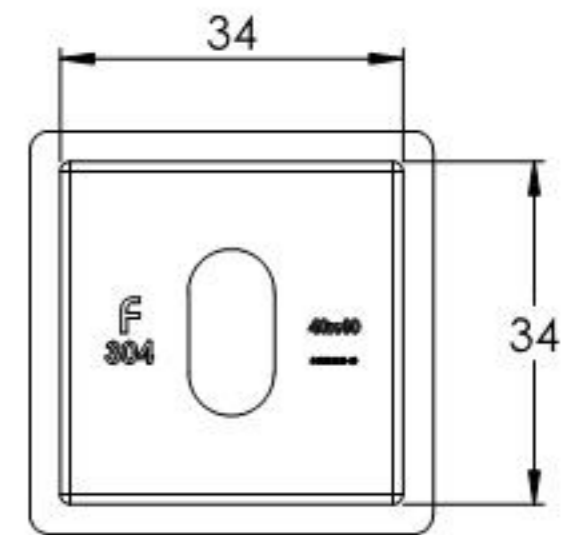
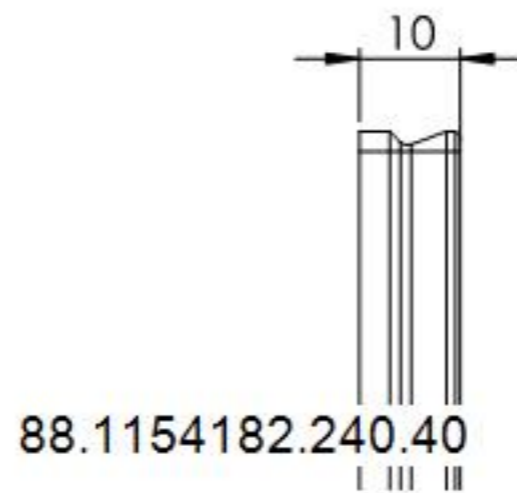
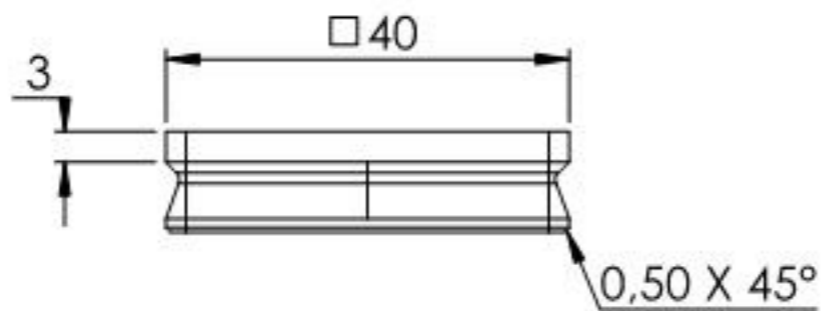
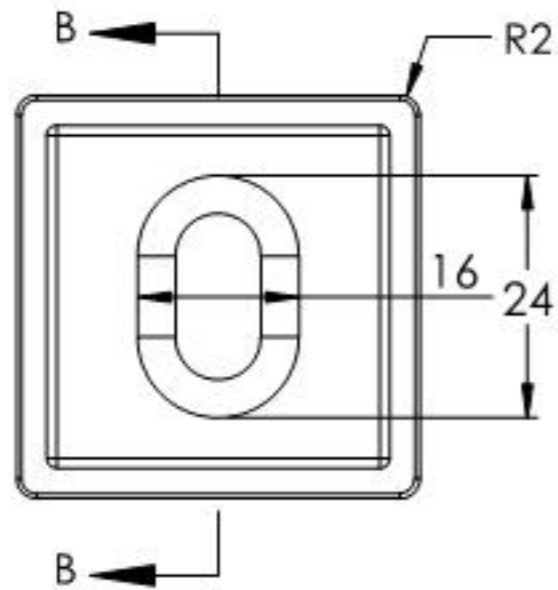


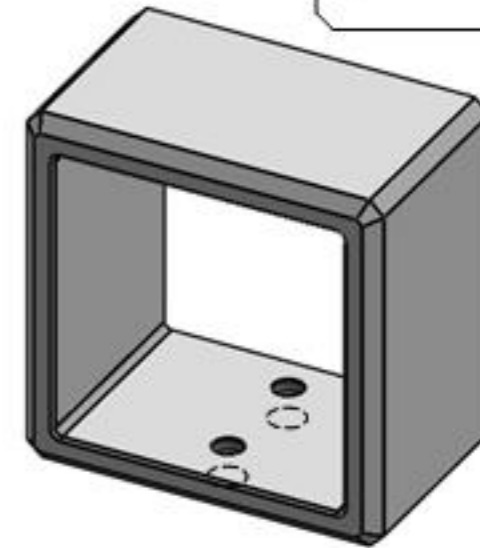
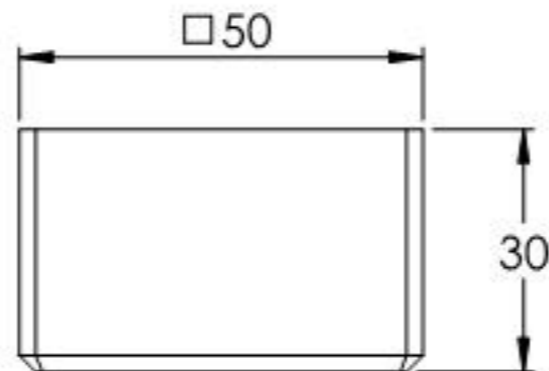
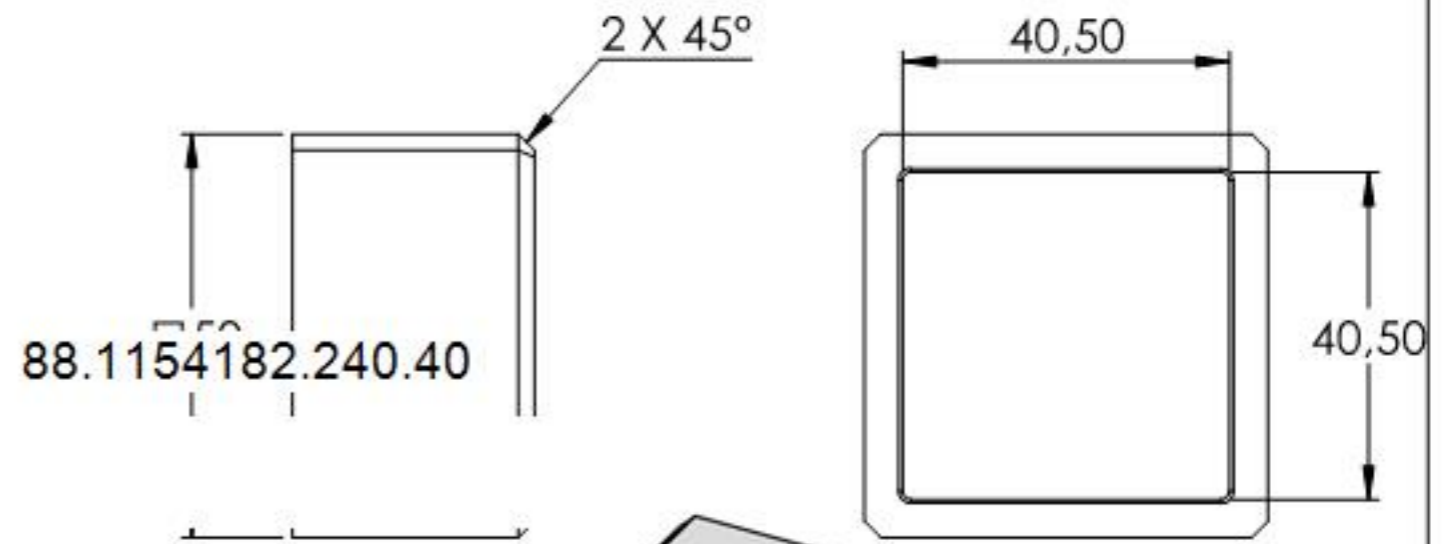
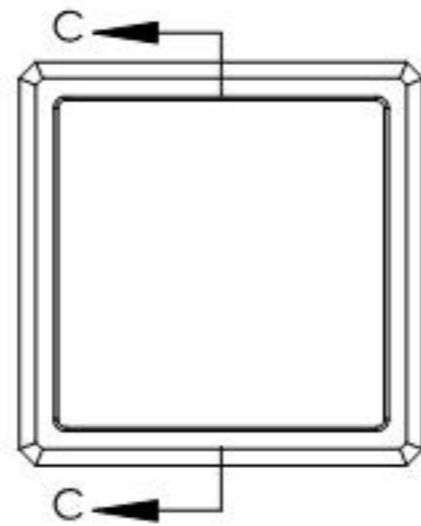
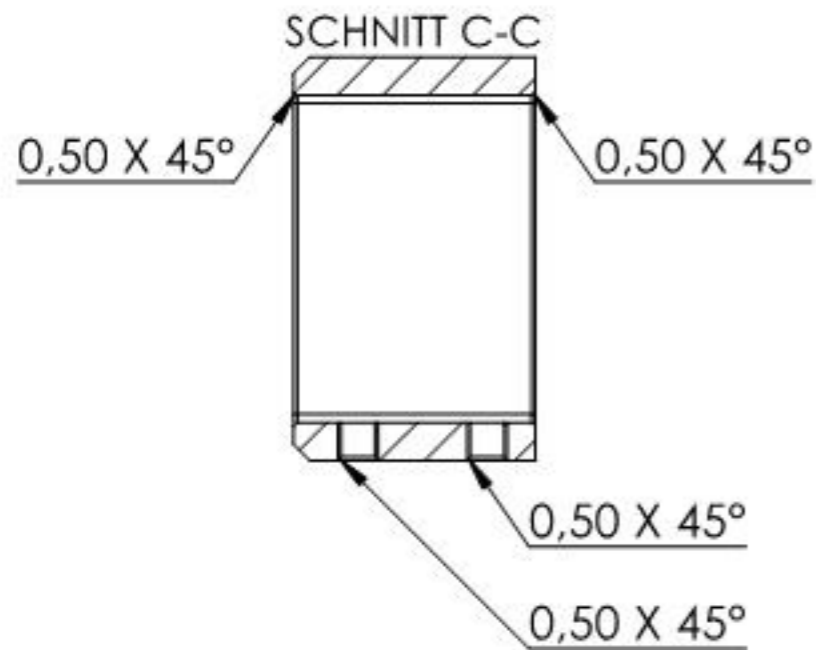
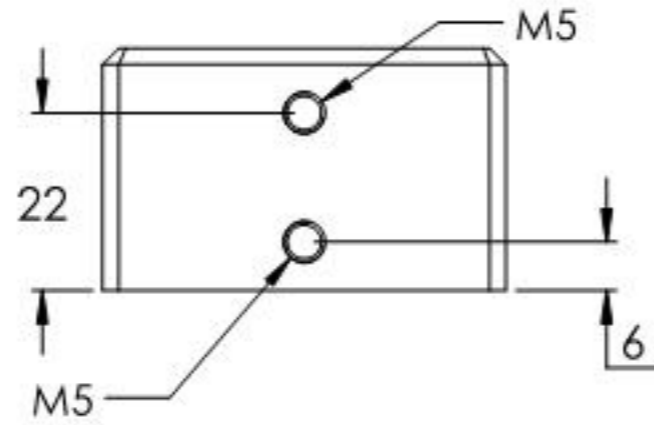
Name	Signatur	Datum	Artikelnummer	Oberfläche: Geschliffen Korn 240
Ch. Höfig	CH	03.12.2019	54182-240-40	
Werkstoff:		Hersteller		Blattformat
1.4301 (X5CrNi18-10)		 <small>EDLSTAHL-ALUMINIUM-SCHWEIßSTEIN</small>		A4
Gewicht 0.271 kg		Maßstab: 1:1.25	Version: 1.1	Blatt 1 von 4



SCHNITT B-B



Name	Signatur	Datum	Artikelnummer	Oberfläche: Roh
Ch. Höfig	CH	03.12.2019	54182-240-40 Teil1	
Werkstoff:		Hersteller		Blattformat
1.4301 (X5CrNi18-10)		 Feldmann <small>EDLSTAHL-ALUMINIUM-SCHWEIßSTEIN</small>		A4
Gewicht 0,072 kg		Maßstab: 1:1	Version: 1.1	Blatt 2 von 4



Name	Signatur	Datum	Artikelnummer	Oberfläche: Geschliffen Korn 240
Ch. Höfig	CH	03.12.2019	54182-240-40 Teil2	
Werkstoff:		Hersteller		Blattformat
1.4301 (X5CrNi18-10)		 <small>EDLSTAHL-ALUMINIUM-SCHWEISSEN</small>		A4
Gewicht 0.198 kg		Maßstab: 1:1.25	Version: 1.1	Blatt 3 von 4