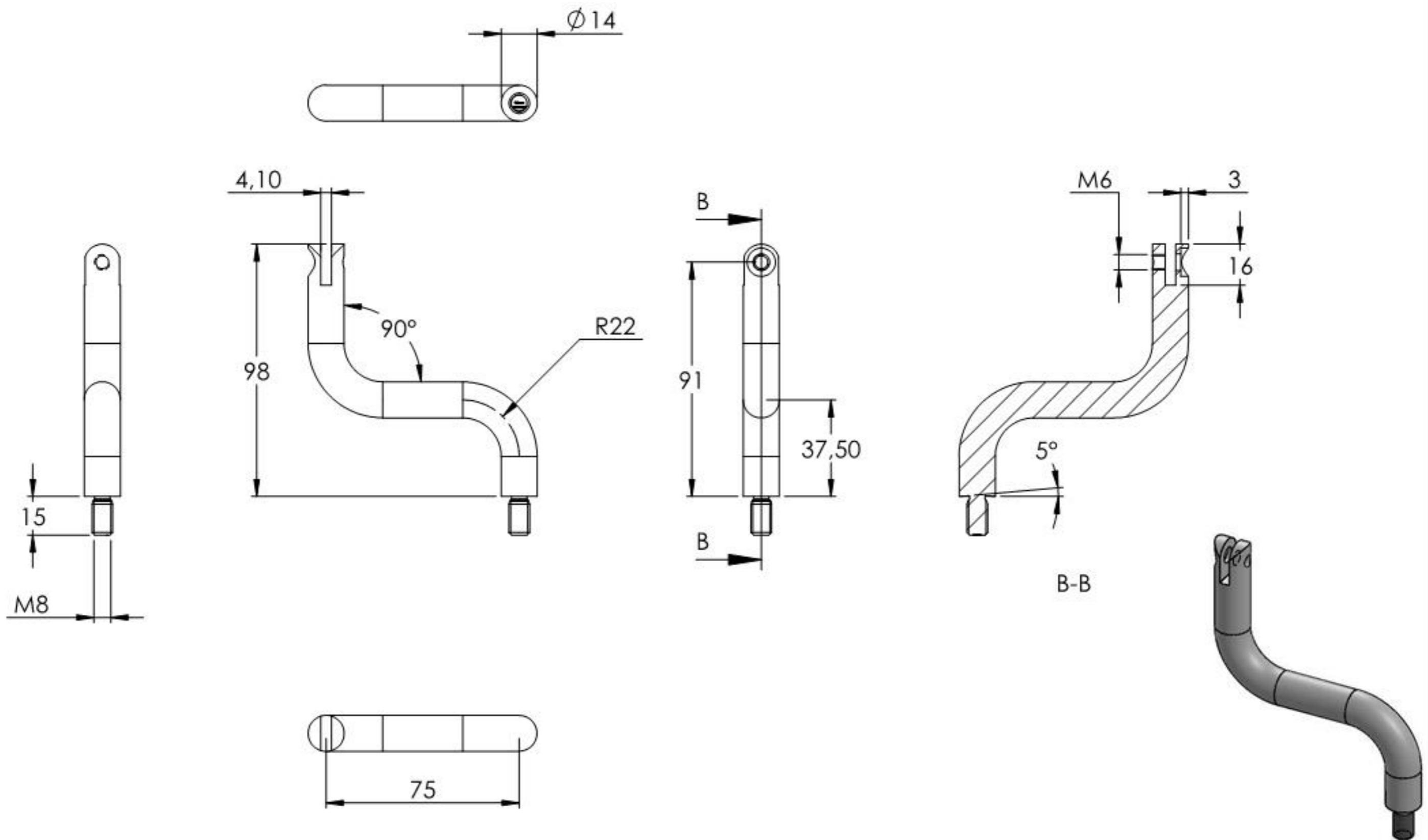
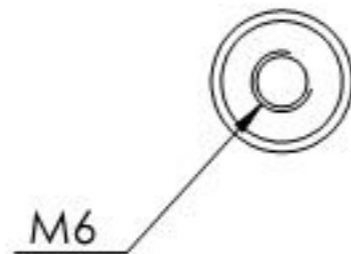
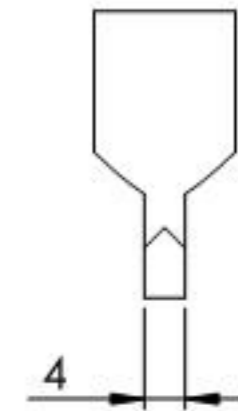
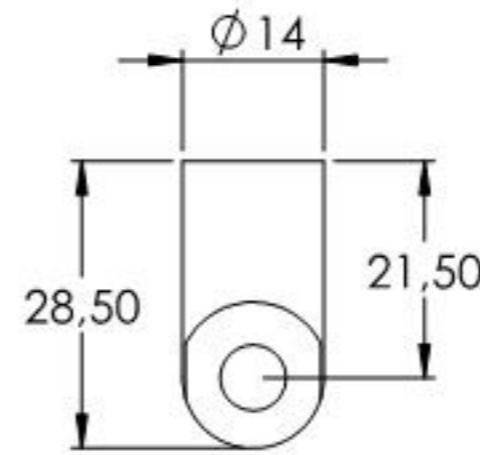
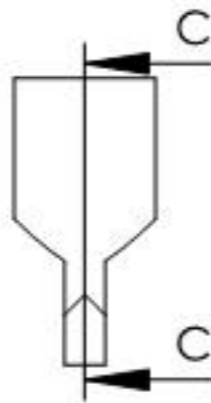
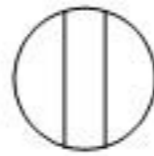
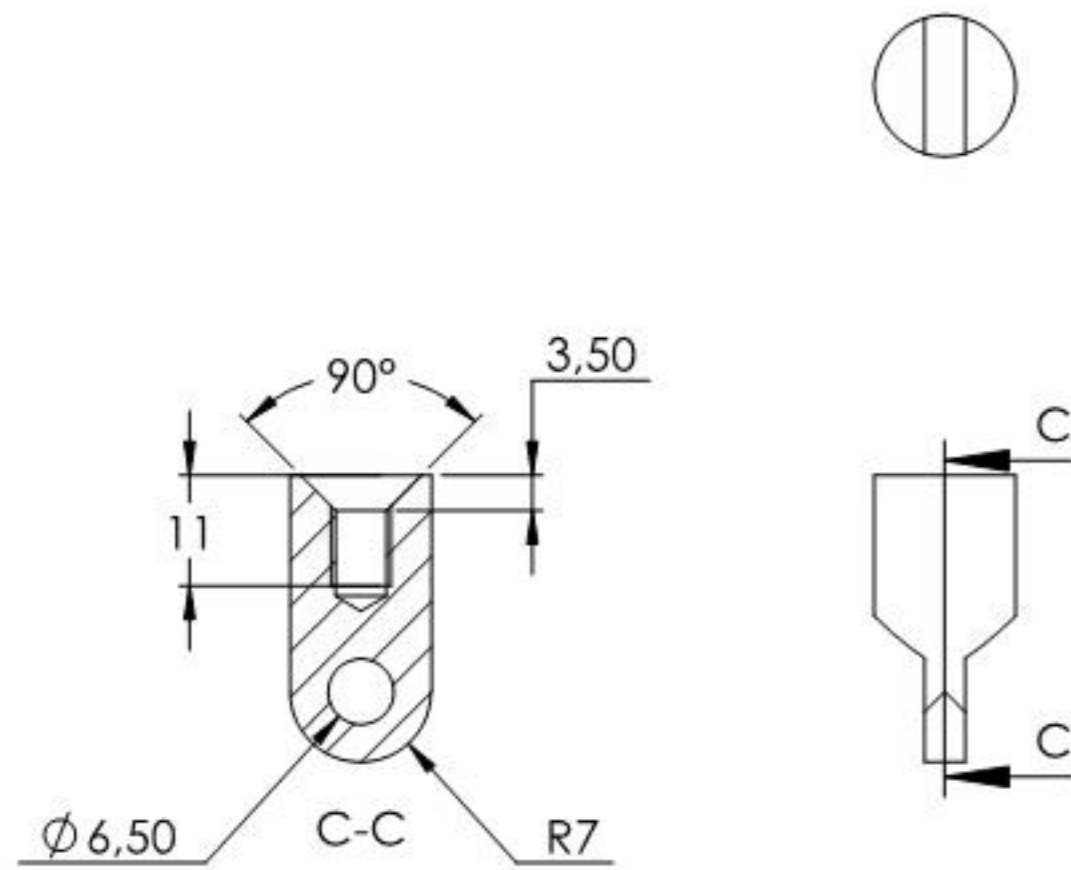


Name	Signatur	Datum	Artikelnummer	Oberfläche: Geschliffen Korn 240
Ch. Höfig	CH	08.08.2018	<b>50249-240-GL</b>	
Werkstoff:				Blattformat
1.4301 (X5CrNi18-10)				<b>A4</b>
Gewicht 0.204 kg		Maßstab: 1:2	Version: 1	Blatt 1 von 4



Name	Signatur	Datum	Artikelnummer	Oberfläche: Geschliffen Korn 240
Ch. Höfig	CH	08.08.2018	50249-240 Teil1	
Werkstoff:				Blattformat
1.4301 (X5CrNi18-10)				A4
Gewicht 0.182 kg		Massstab: 1:2	Version: 1	Blatt 2 von 4



Name	Signatur	Datum	Artikelnummer	Oberfläche: Geschliffen Korn 240
Ch. Höfig	CH	08.08.2018	50249-240-GL Teil2	
Werkstoff:				Blattformat
1.4301 (X5CrNi18-10)				A4
Gewicht 0,019 kg		Maßstab: 1:1	Version: 1	Blatt 3 von 4