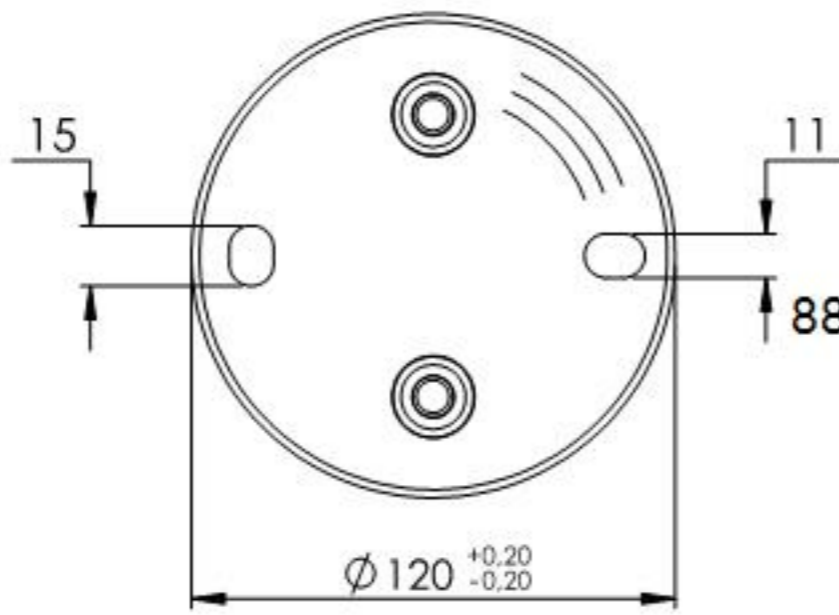
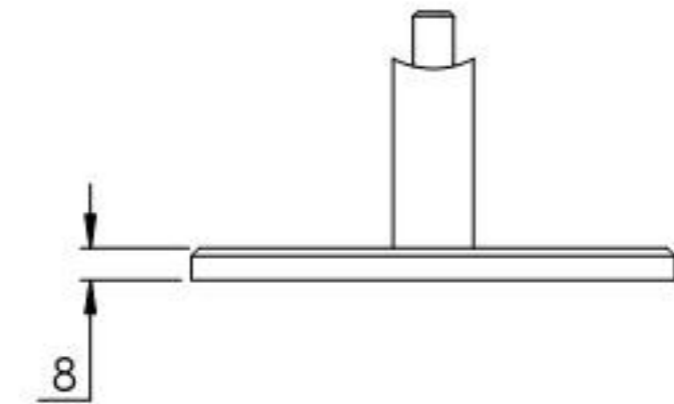
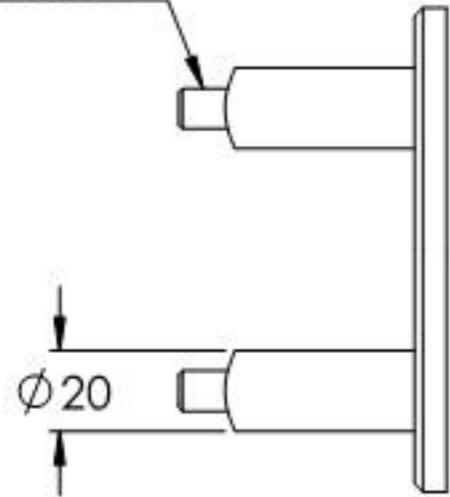
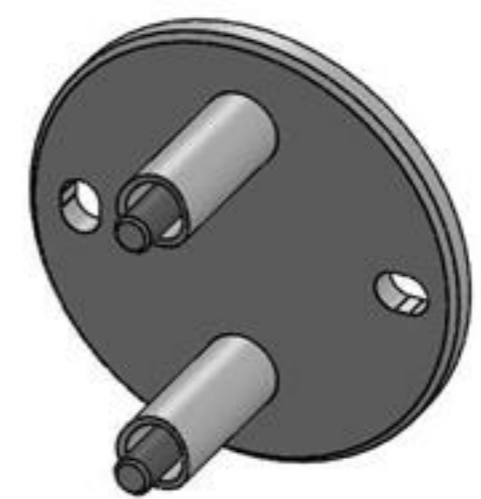
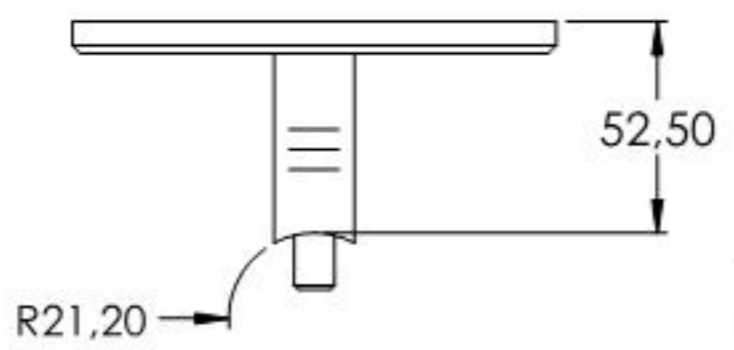
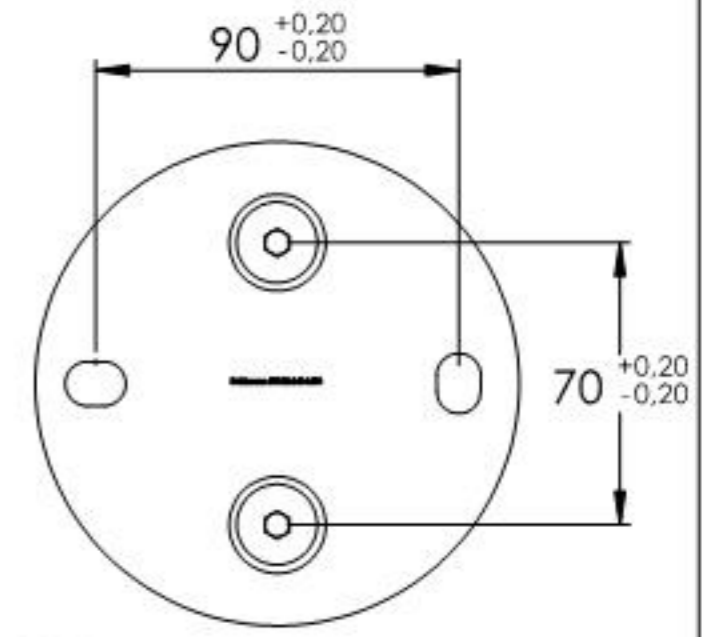
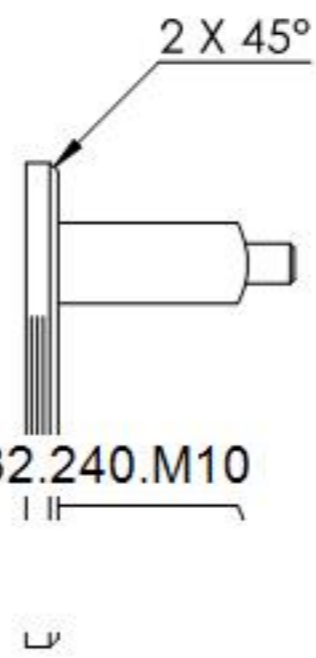


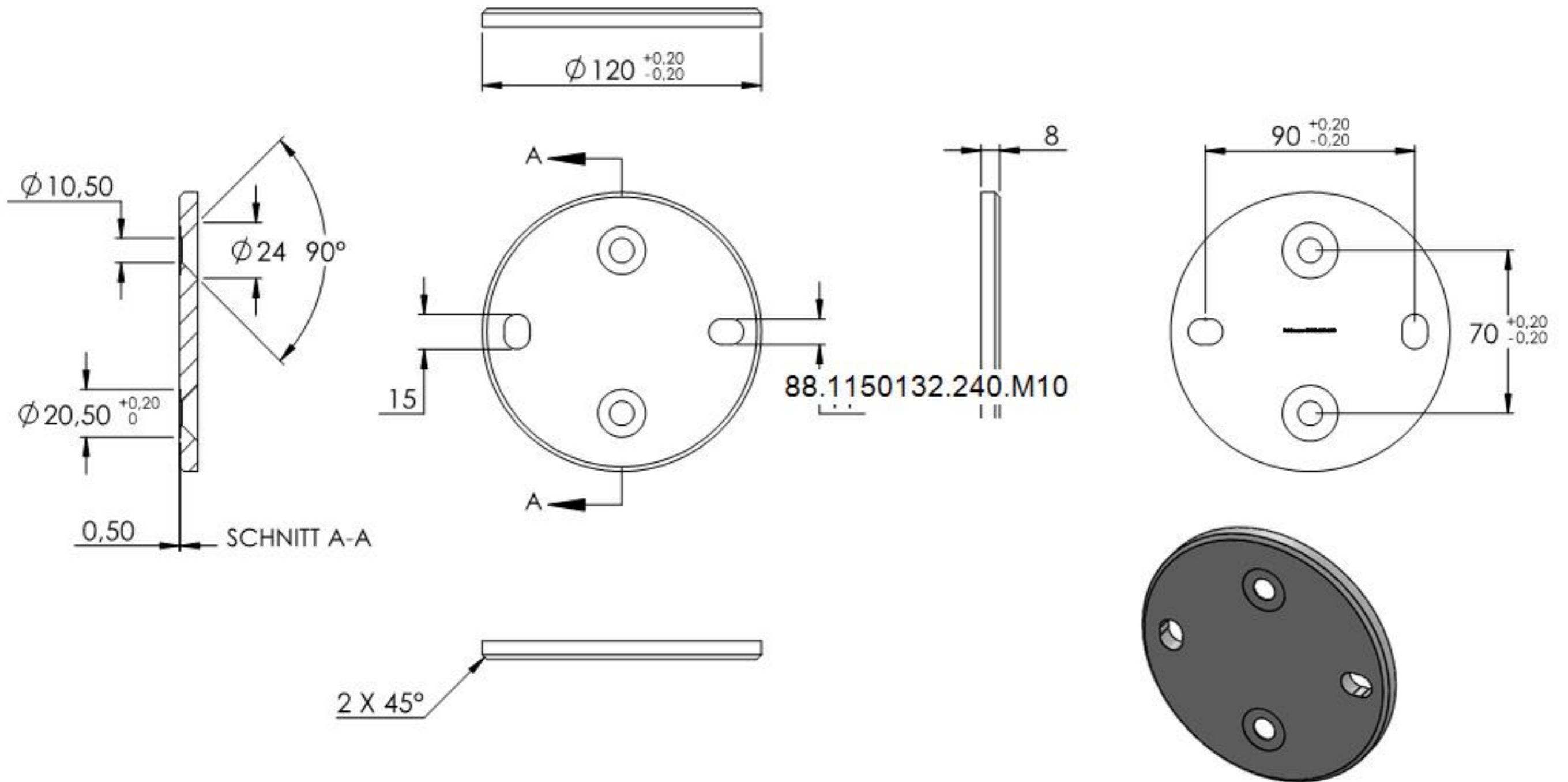
DIN 7991  
M10x65



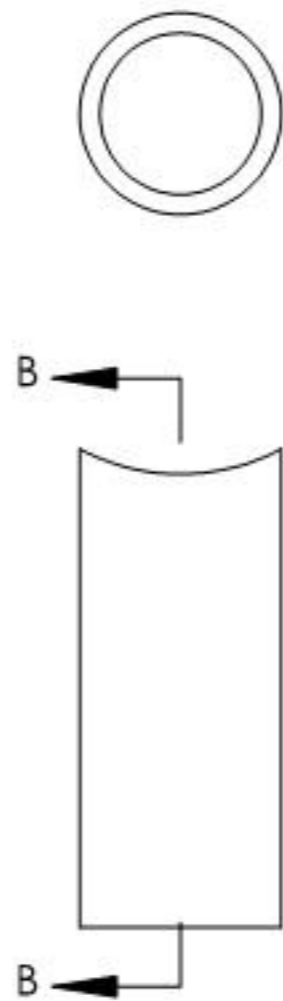
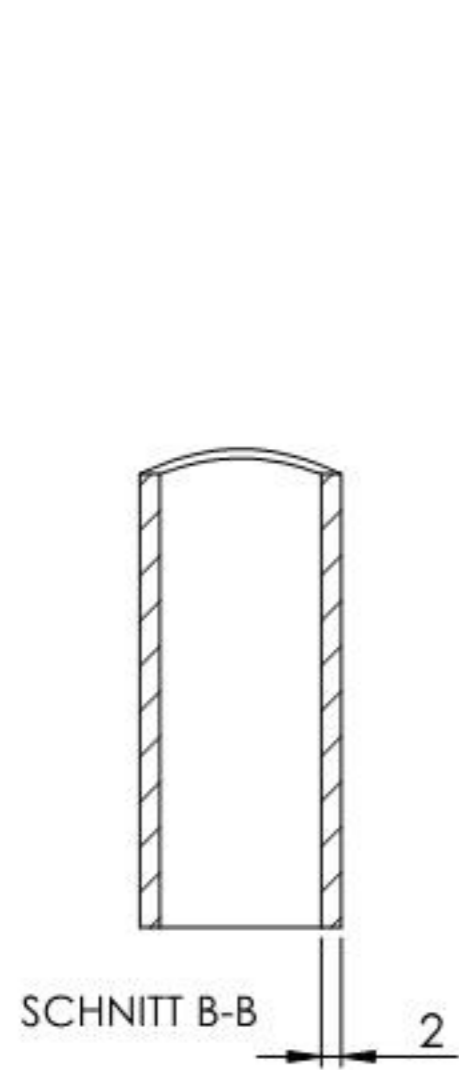
88.1150132.240.M10



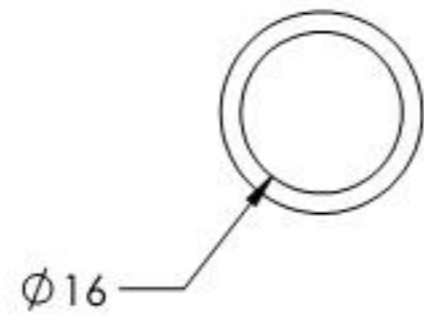
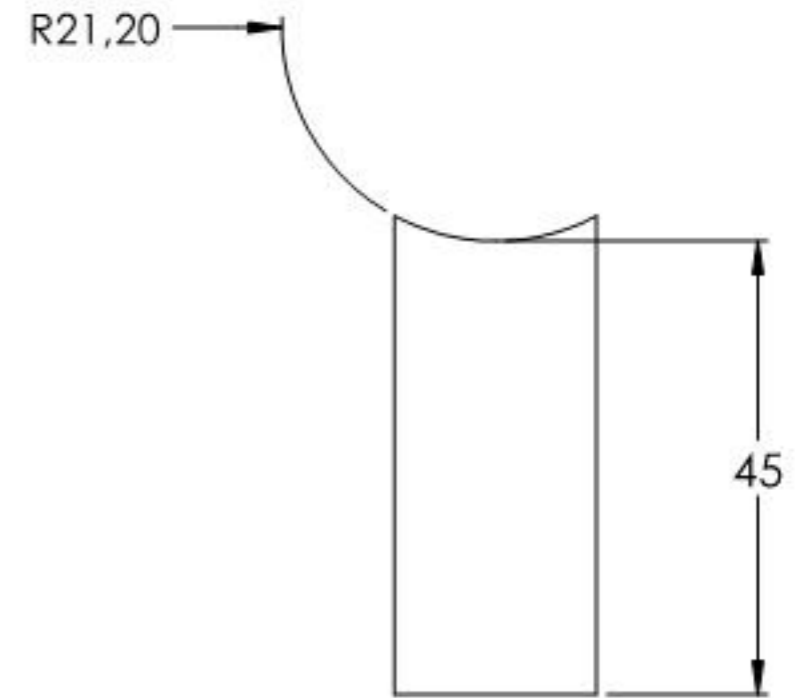
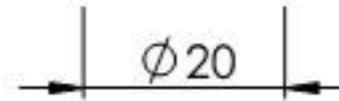
Name	Signatur	Datum	Artikelnummer	Oberfläche: Geschliffen Korn 240
Ch. Höfig	CH	28.07.2020	50132-240-M10	
Werkstoff: 1.4301 (X5CrNi18-10)		Hersteller		Blattformat
		 EDLSTAHLE-ALUMINIUM-SCHWEIßSTEIN		A4
Gewicht 0.832 kg		Maßstab: 1:2.5	Version: 1.2	Blatt 1 von 4



Name	Signatur	Datum	Artikelnummer	Oberfläche: Geschliffen Korn 240
Ch. Höfig	CH	28.07.2020	50132-240-M10 Teil1	
Werkstoff: 1.4301 (X5CrNi18-10)			Hersteller	Blattformat
			 <b>Feldmann</b> EDLSTAHL-ALUMINIUM-SCHWEIßSTEIN	A4
Gewicht 0.661 kg			Maßstab: 1:2.5	Version: 1.1
Blatt 2 von 4				



88.1150132.240.M10



Name	Signatur	Datum	Artikelnummer	Oberfläche: Geschliffen Korn 240
Ch. Höfig	CH	28.07.2020	50132-240-M10 Teil2	
Werkstoff:		Hersteller		Blattformat
1.4301 (X5CrNi18-10)		 <small>EDLSTAHLE · ALUMINIUM · SCHWEIßEISEN</small>		A4
Gewicht 0,041 kg		Maßstab: 1:1	Version: 1.1	Blatt 3 von 4