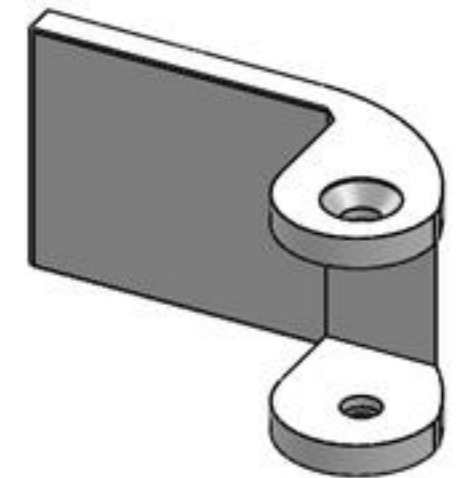
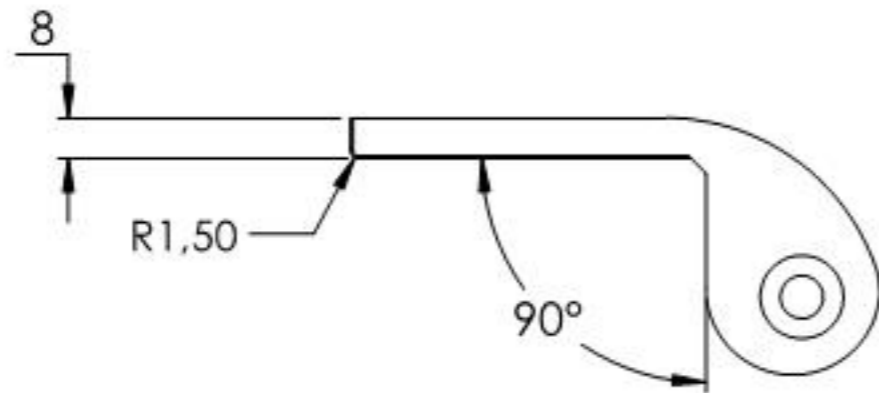
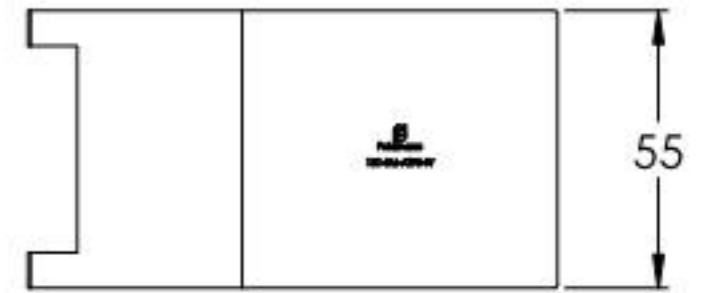
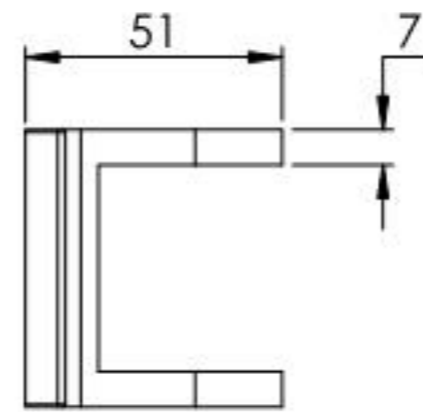
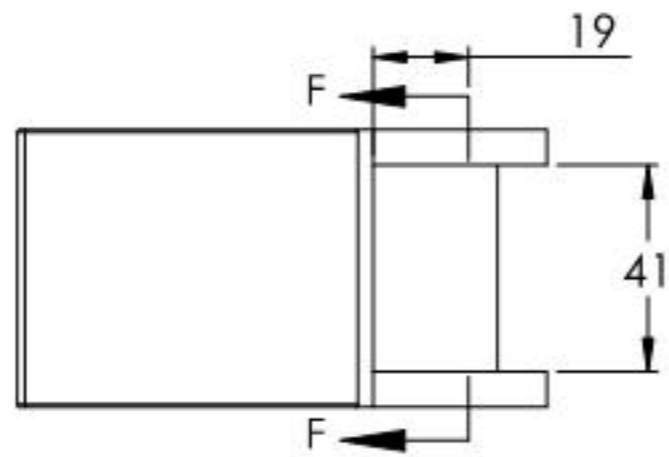
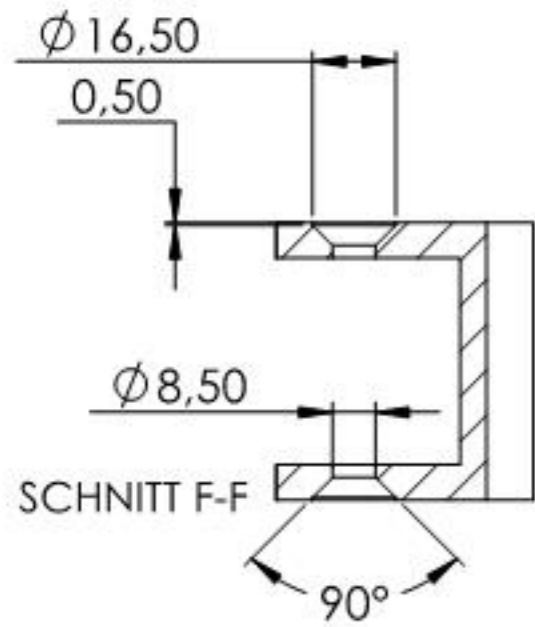
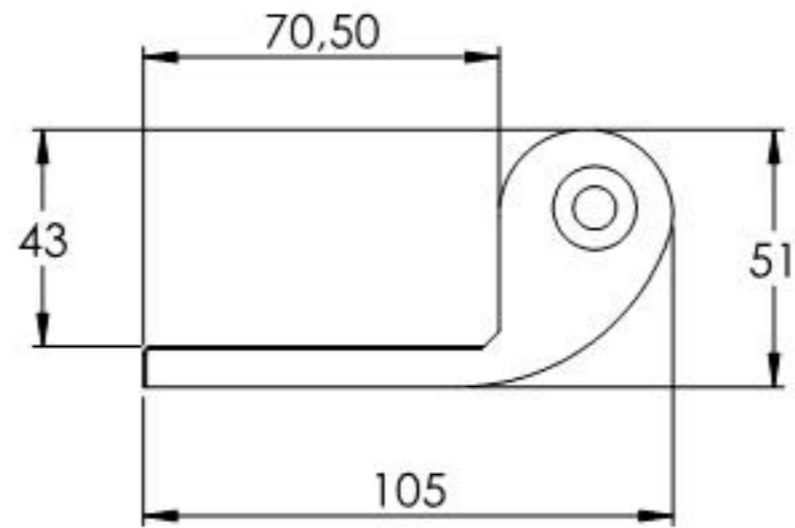
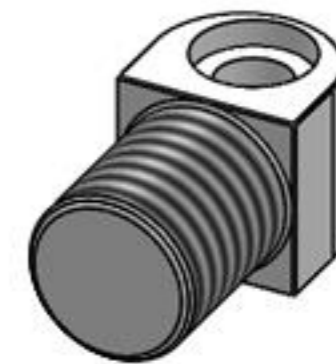
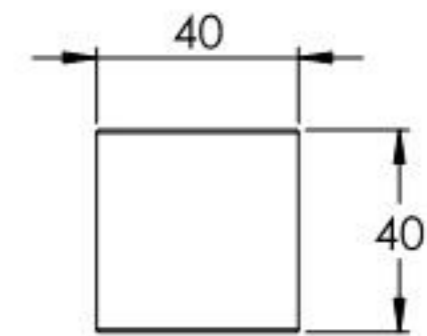
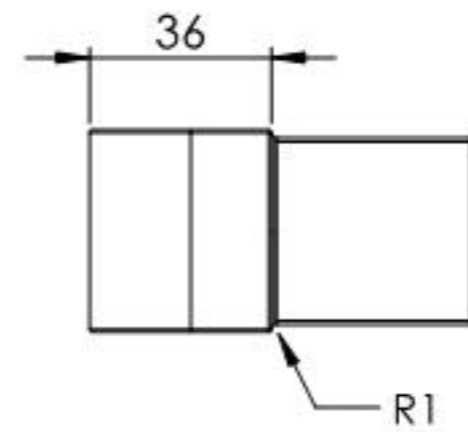
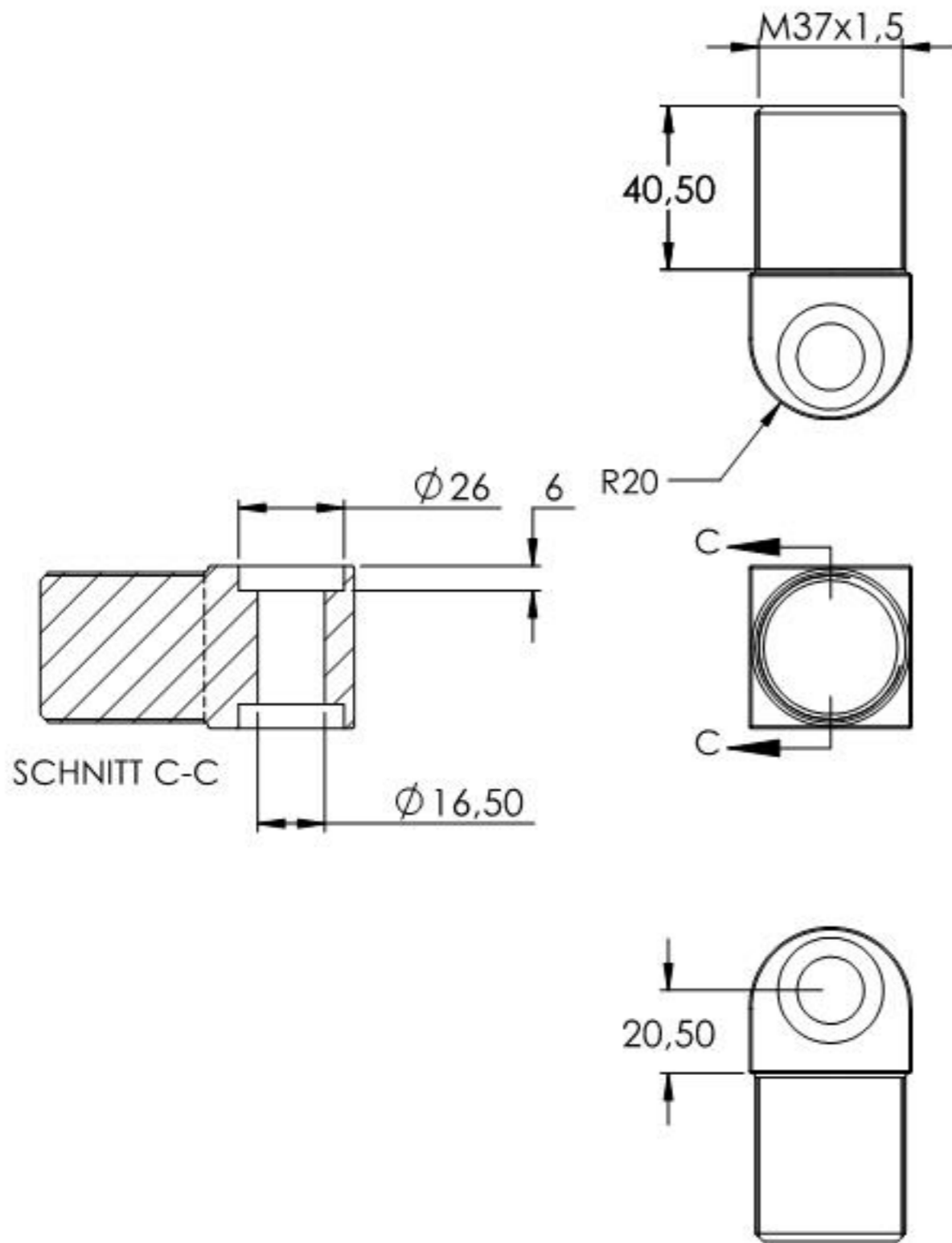


Name	Signatur	Datum	Artikelnummer	Oberfläche: Eloxierf
Ch. Höfig	CH	13.04.2021	181-SM-AT90-W	
Werkstoff: Aluminium [EN AW6060 / 3.3206]				Blattformat A4
Gewicht 0,478 kg		Maßstab: 1:2	Version: 1	Blatt 1 von 6



Name	Signatur	Datum	Artikelnummer	Oberfläche: Roh
Ch. Höfig	CH	13.04.2021	181-SM-AT90-W Teil1	
Werkstoff:				Blattformat
1.0037 (S235JR)				A4
Gewicht 0.152 kg		Maßstab: 1:2	Version: 1	Blatt 2 von 6



Name	Signatur	Datum	Artikelnummer	Oberfläche: Eloxierf
Ch. Höfig	CH	13.04.2021	181-SM-AT90-W Teil2	
Werkstoff:				Blattformat
Aluminium [EN AW6060 / 3.3206]				A4
Gewicht 0.224 kg		Maßstab: 1:2	Version: 1	Blatt 3 von 6