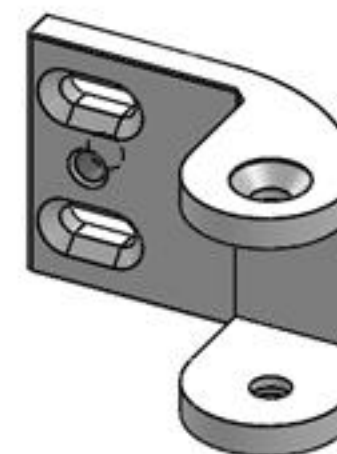
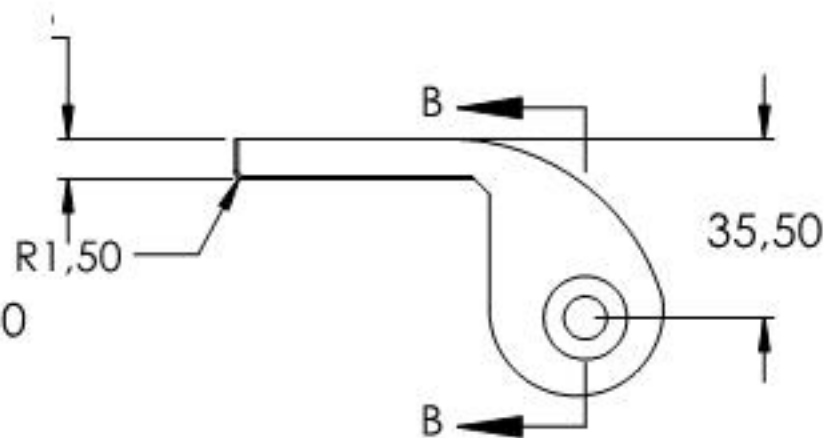
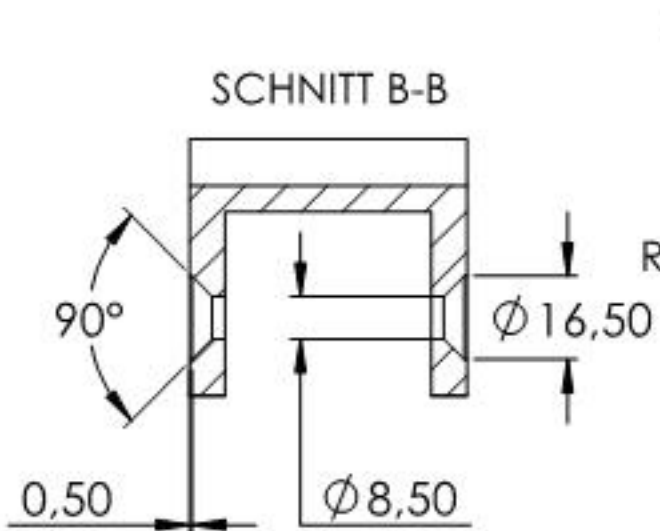
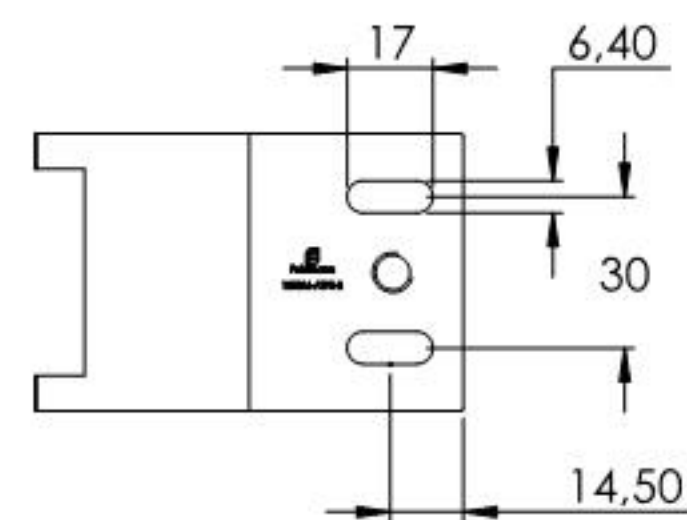
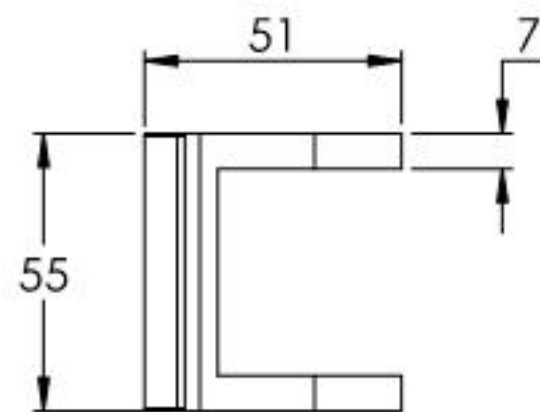
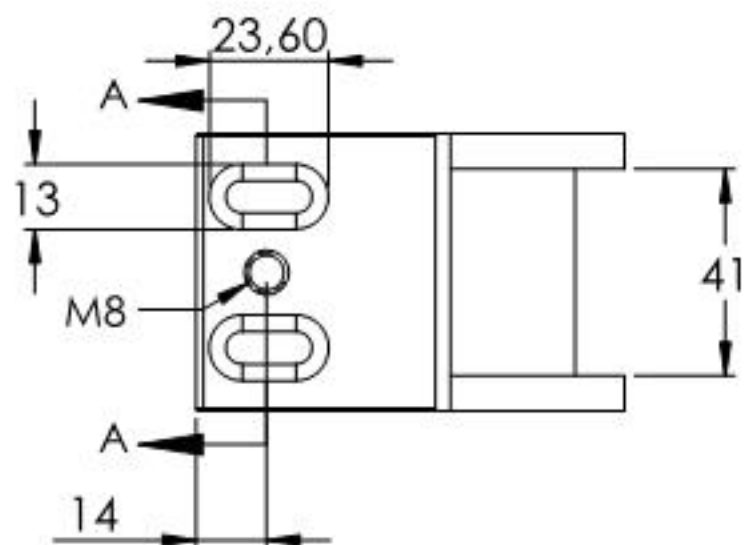
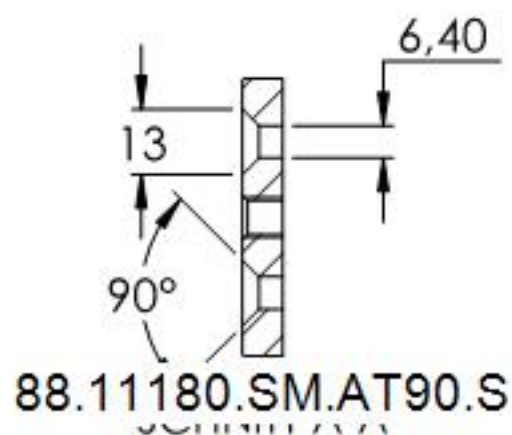
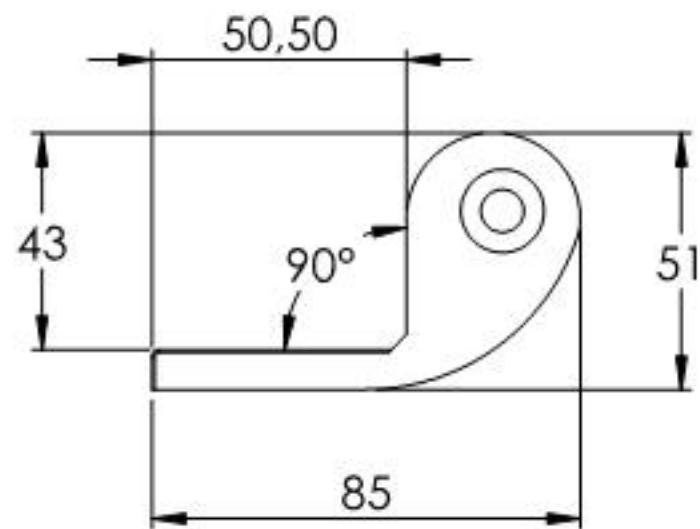
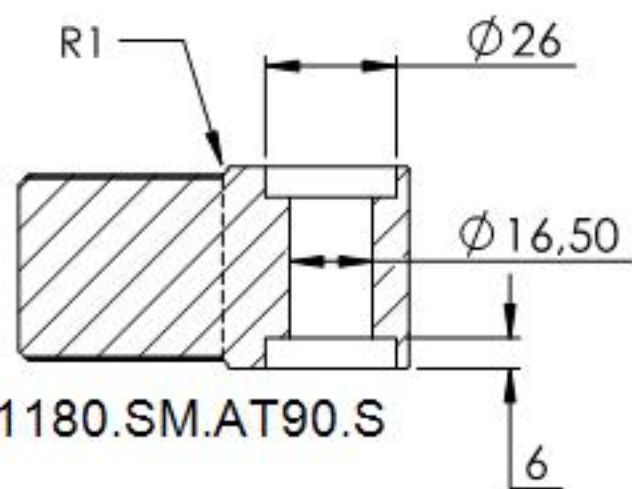
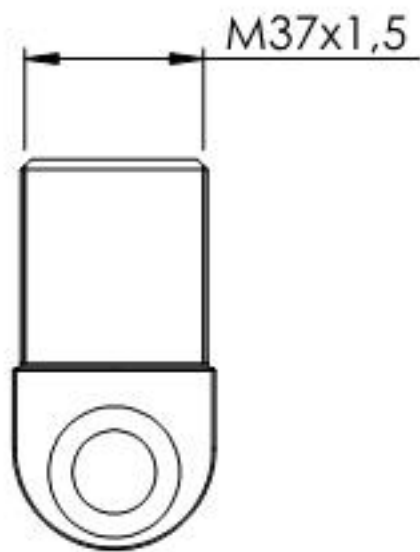


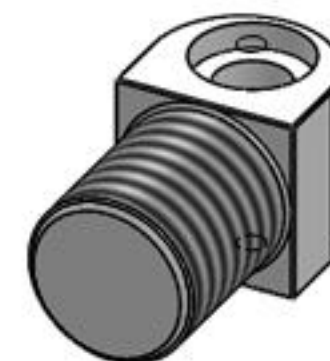
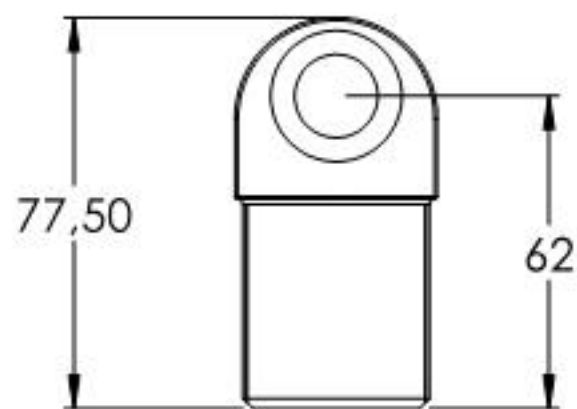
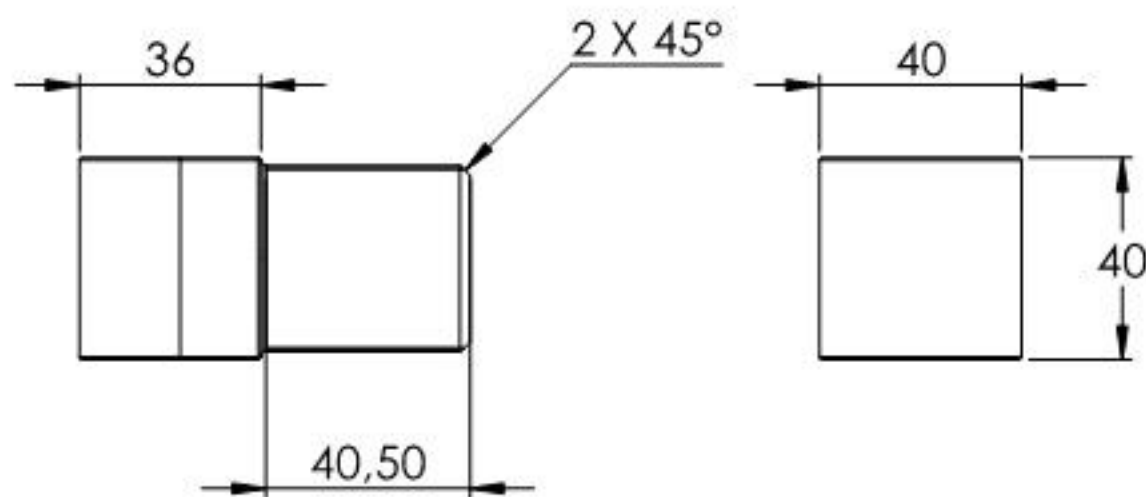
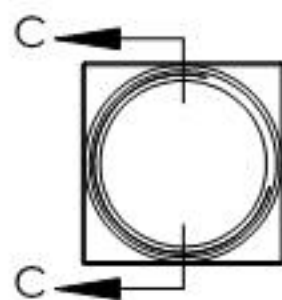
Name	Signatur	Datum	Artikelnummer	Oberfläche: Eloxierf
Ch. Höfig	CH	06.04.2021	180-SM-AT90-S	
Werkstoff:		Hersteller		Blattformat
Aluminium [EN AW6060 / 3.3206]		 Feldmann <small>EDLSTAHL-ALUMINIUM-SCHWEIßEISEN</small>		A4
Gewicht 0,449 kg		Maßstab: 1:2	Version: 1	Blatt 1 von 6



Name	Signatur	Datum	Artikelnummer	Oberfläche: Eloxierf
Ch. Höfig	CH	06.04.2021	180-SM-AT90-S Teil1	
Werkstoff: Aluminium [EN AW6060 / 3.3206]			Hersteller	Blattformat
			 Feldmann EDLSTAHL-ALUMINIUM-SCHWEIßSTEIN	A4
Gewicht 0.122 kg		Maßstab: 1:2	Version: 1	Blatt 2 von 6



88.11180.SM.AT90.S



Name	Signatur	Datum	Artikelnummer	Oberfläche: Eloxierf
Ch. Höfig	CH	06.04.2021	180-SM-AT90-S Teil2	
Werkstoff:		Hersteller		Blattformat
Aluminium [EN AW6060 / 3.3206]				A4
Gewicht 0.224 kg		Maßstab: 1:2	Version: 1	Blatt 3 von 6