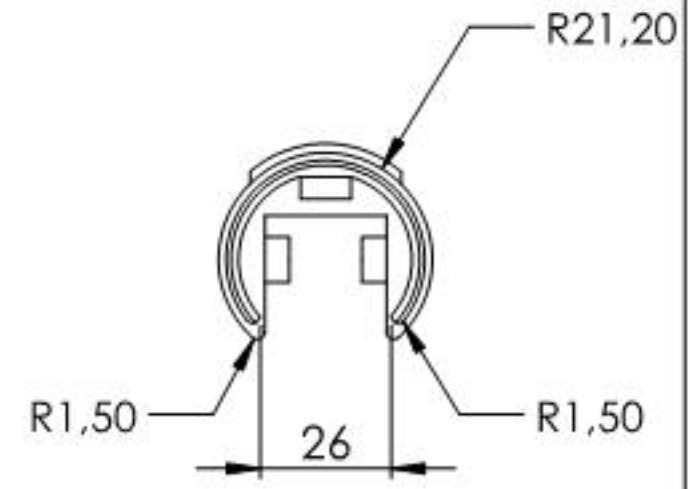
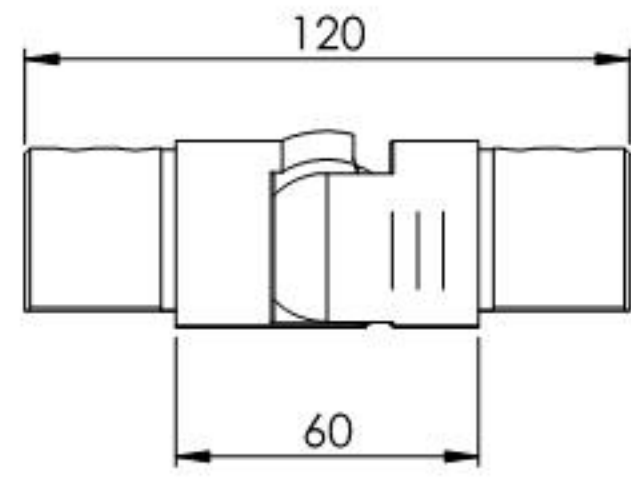
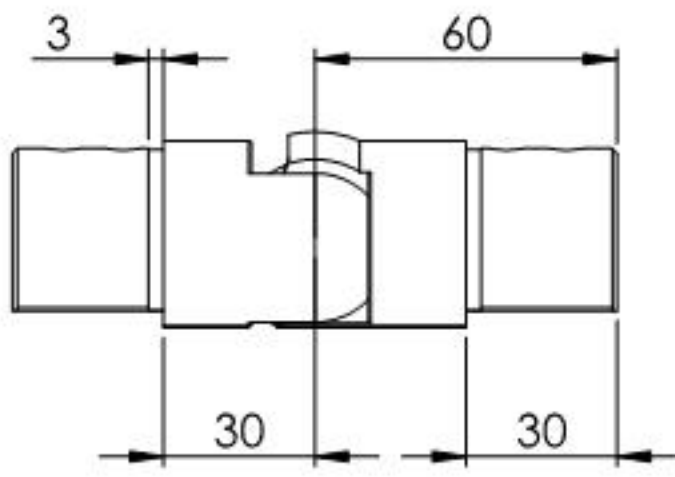
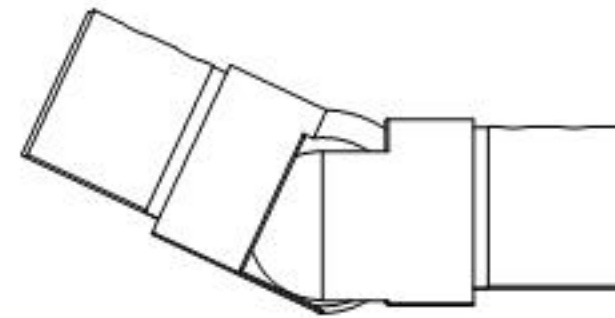
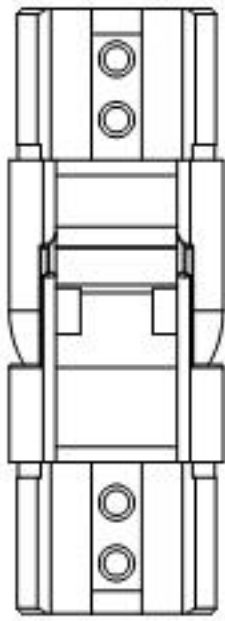
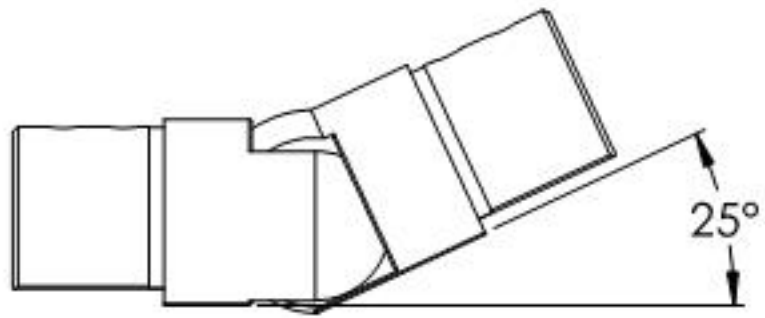
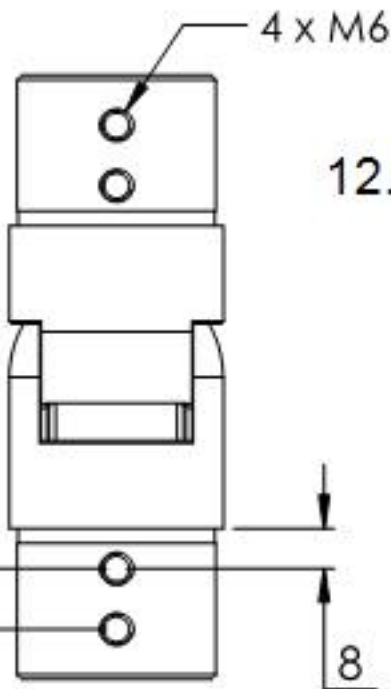
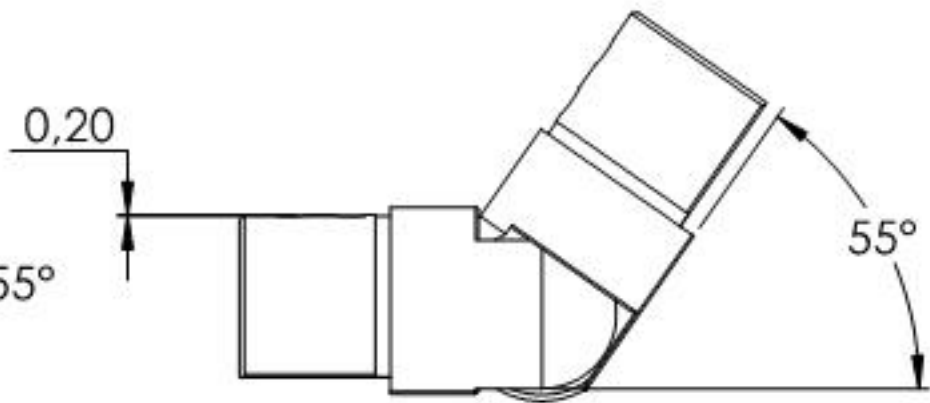


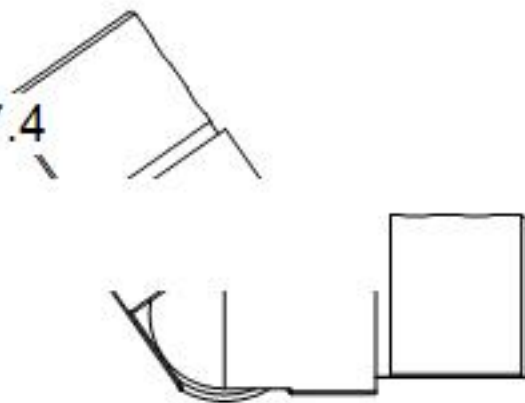
25°



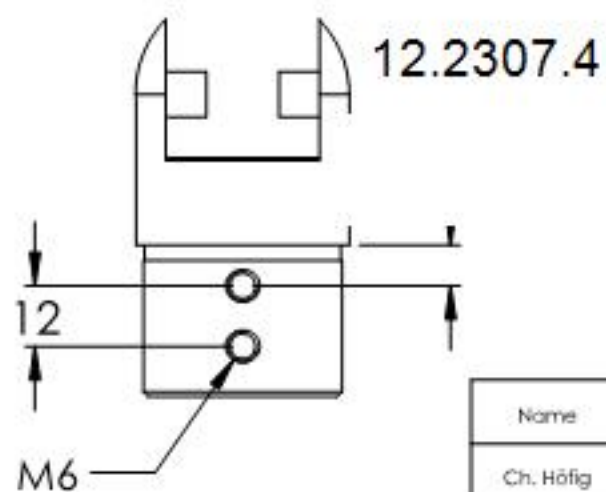
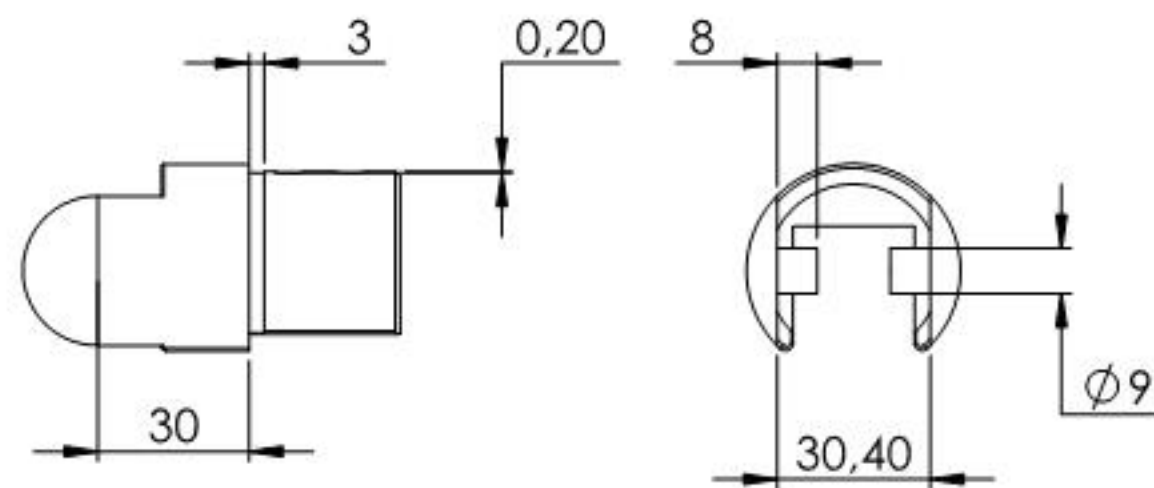
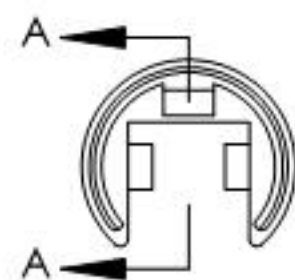
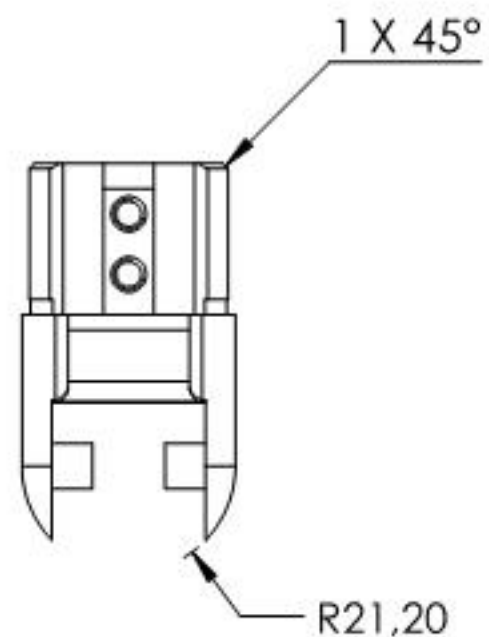
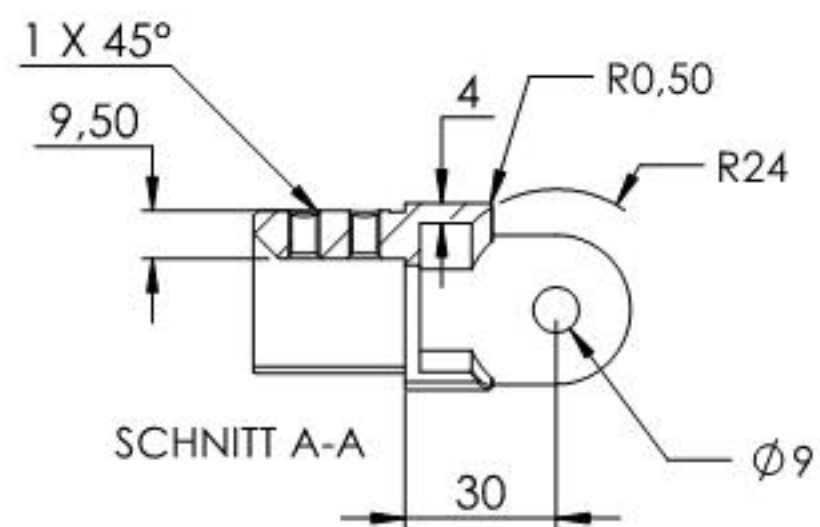
55°



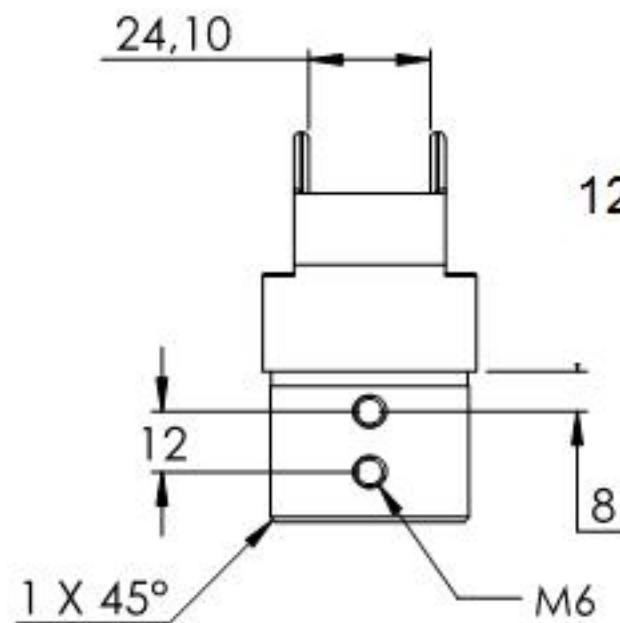
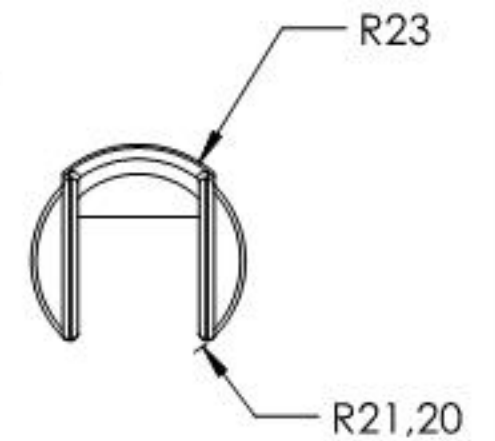
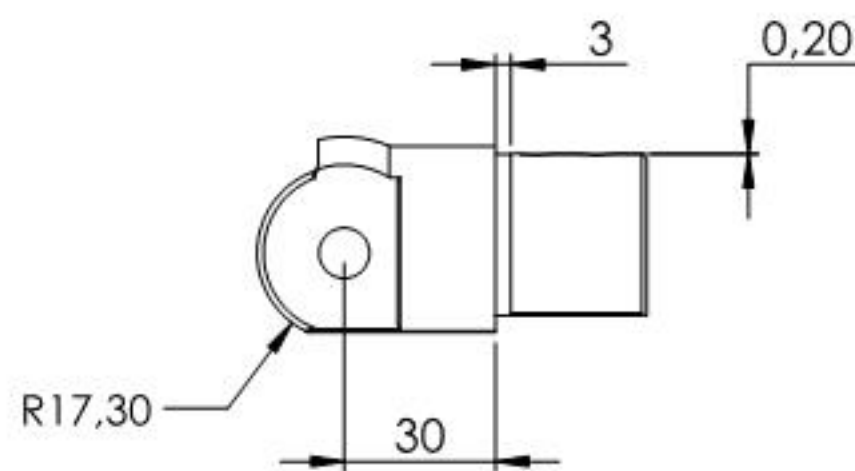
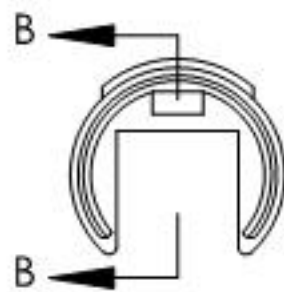
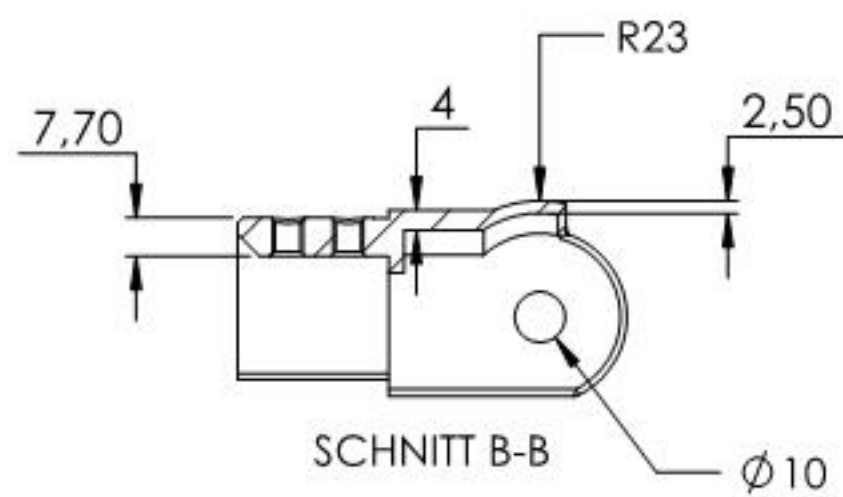
12.2307.4



Name	Signatur	Datum	Artikelnummer	Oberfläche: Geschliffen Korn 240	
Ch. Höfig	CH	06.05.2020	60312-240		
Werkstoff: 1.4301 (X5CrNi18-10)			Hersteller		Blattformat
			 Feldmann <small>EDLSTAHL-ALUMINIUM-SCHWEIßSTEIN</small>		A4
Gewicht 0.355 kg		Maßstab: 1:2	Version: 1	Blatt 1 von 4	



Name	Signatur	Datum	Artikelnummer	Oberfläche: Geschliffen Korn 240
Ch. Höfig	CH	06.05.2020	60312-240 Teil1	
Werkstoff:		Hersteller		Blattformat
1.4301 (X5CrNi18-10)		 EDLSTAHLE-ALUMINIUM-SCHWEIßSTEIN		A4
Gewicht 0.172 kg		Maßstab: 1:2	Version: 1	Blatt 2 von 4



12.2307.4



Name	Signatur	Datum	Artikelnummer	Oberfläche: Geschliffen Korn 240
Ch. Höfig	CH	06.05.2020	60312-240 Teil2	
Werkstoff:		Hersteller		Blattformat
1.4301 (X5CrNi18-10)		 Feldmann <small>EDLSTAHL-ALUMINIUM-SCHWEIßSTEIN</small>		A4
Gewicht 0.182 kg		Maßstab: 1:2	Version: 1	Blatt 3 von 4