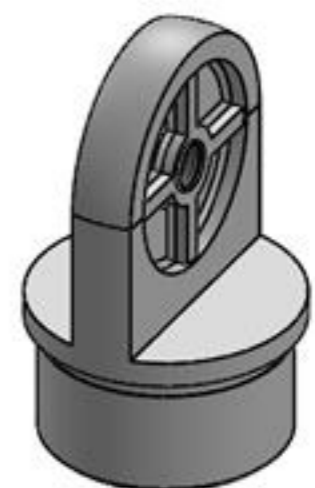
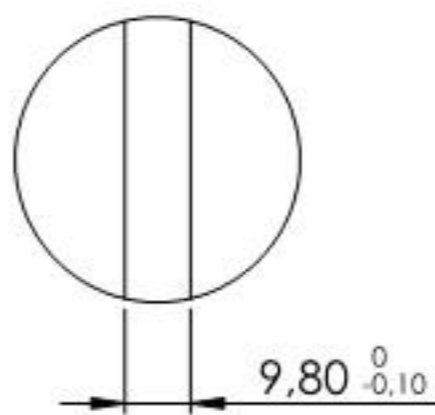
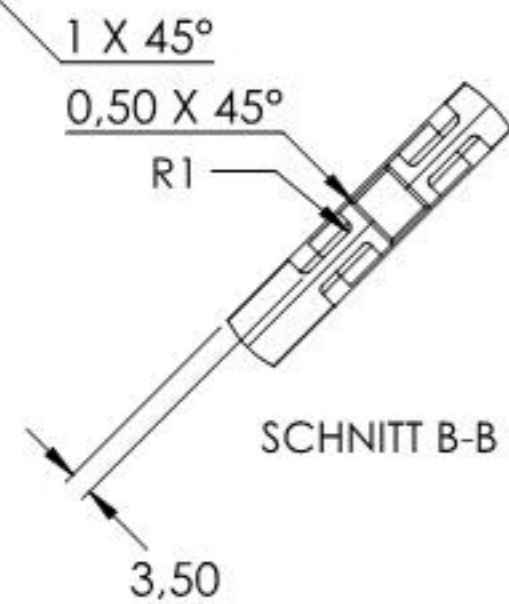
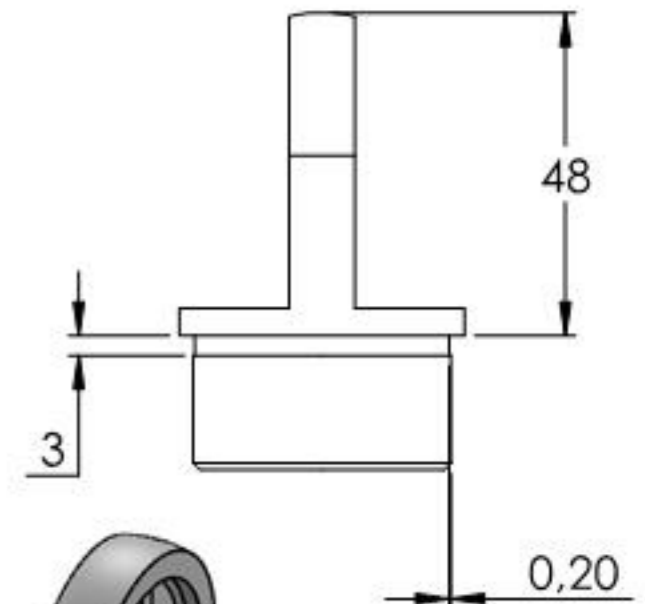
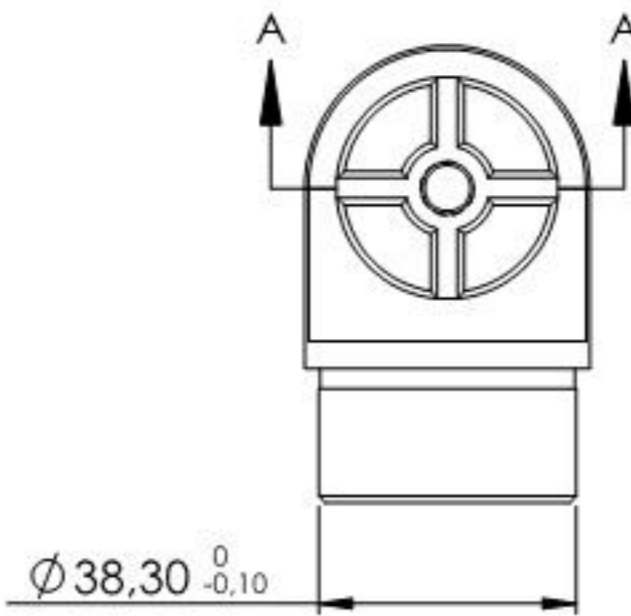
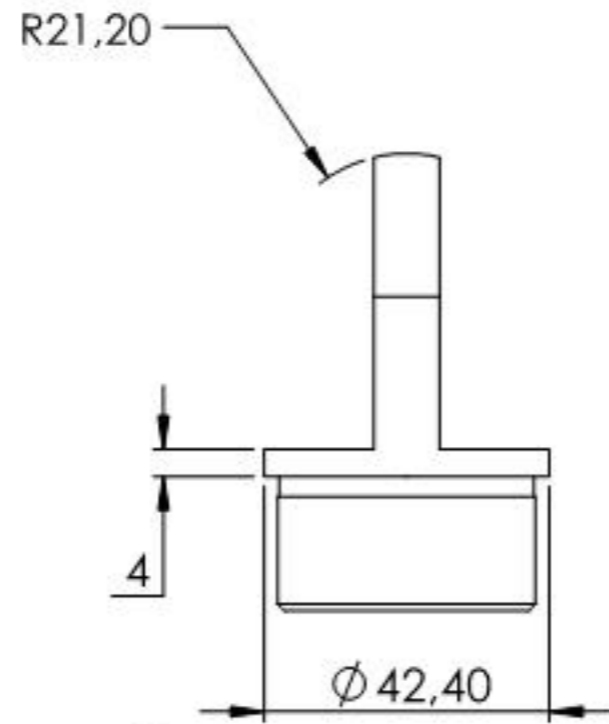
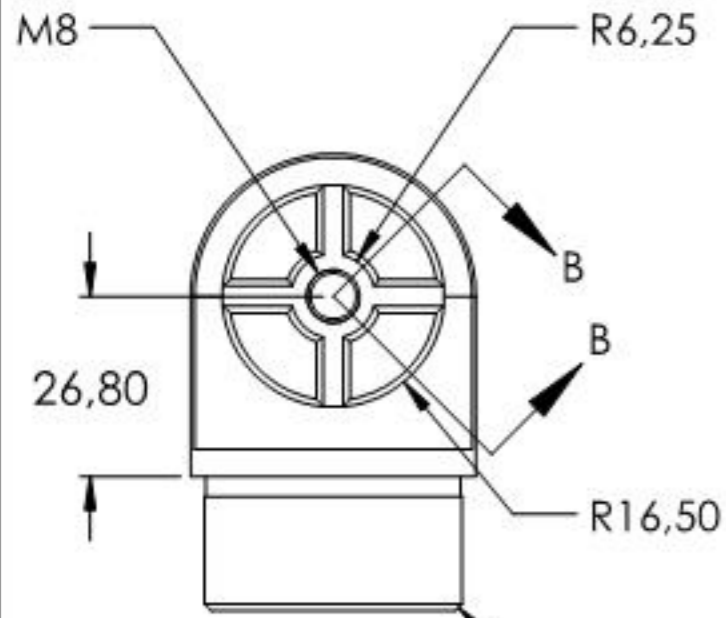
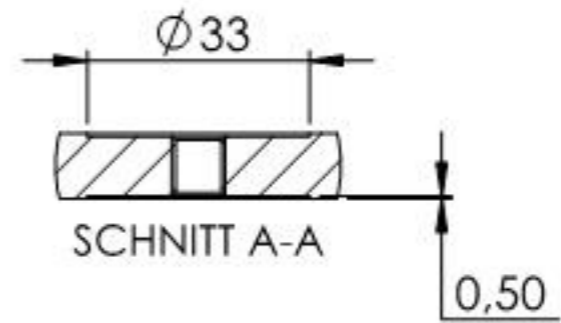
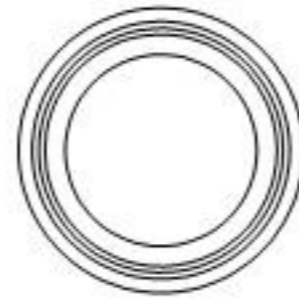


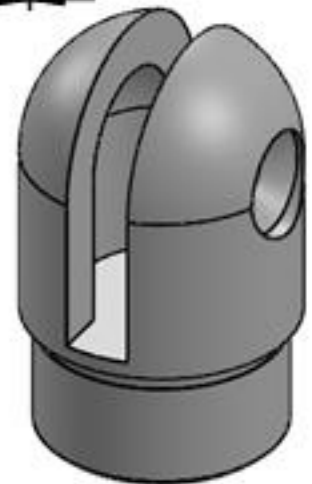
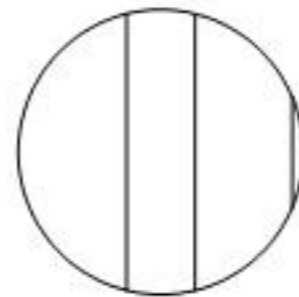
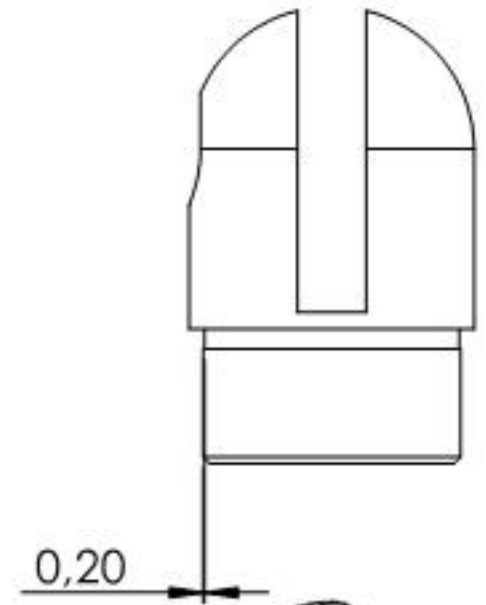
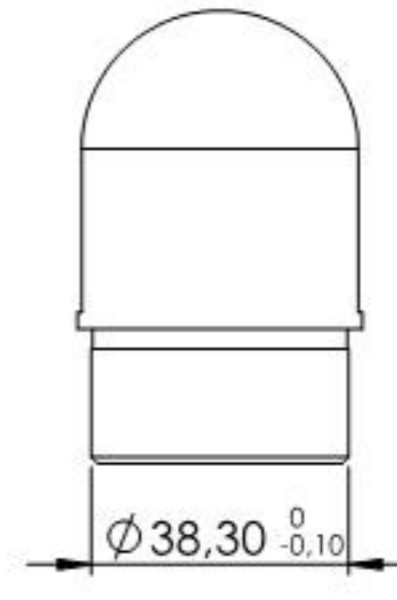
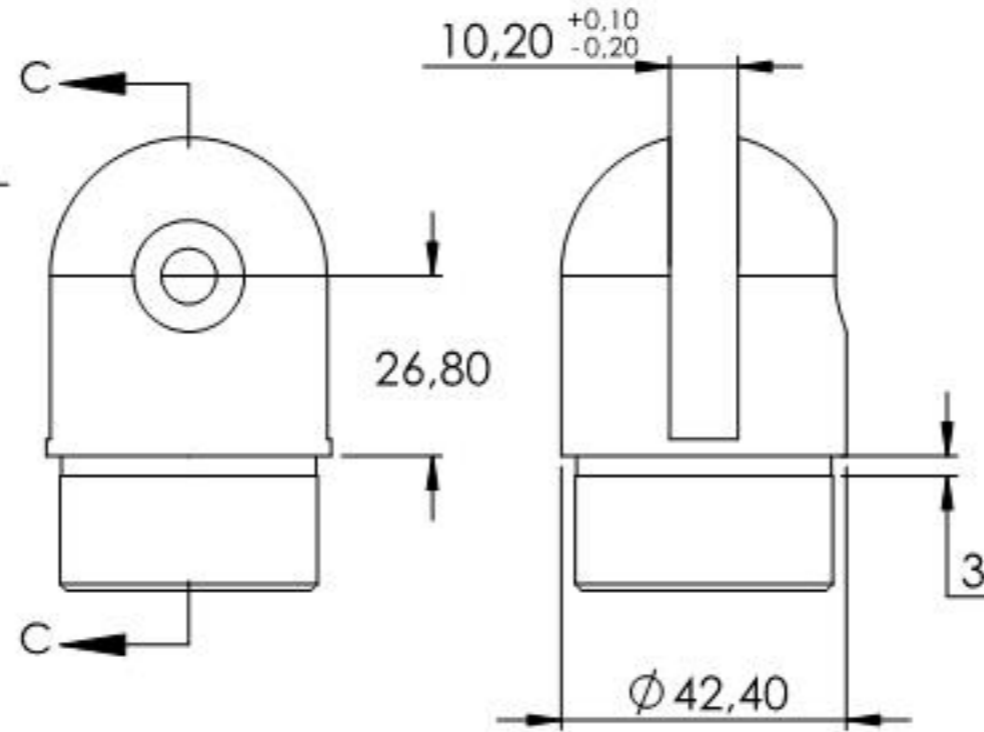
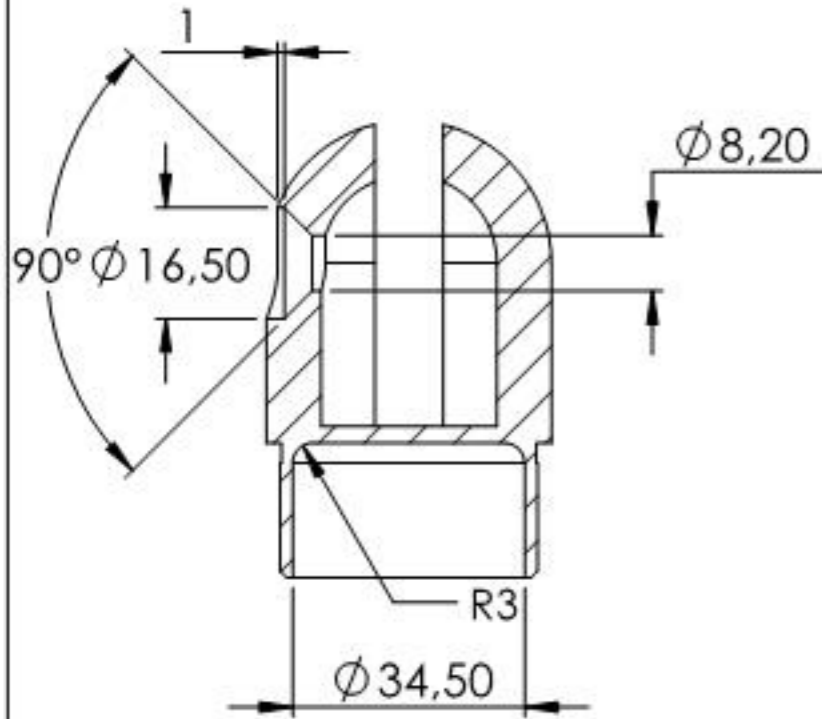
Name	Signatur	Datum	Artikelnummer	Oberfläche: Geschliffen Korn 240
Ch. Höfig	CH	28.02.2020	56250-320	
Werkstoff:				Blattformat
1.4301 (X5CrNi18-10)				A4
Gewicht 0,449 kg		Massstab: 1:1,5	Version: 1	Blatt 1 von 4



Name	Signatur	Datum	Artikelnummer	Oberfläche: Geschliffen Korn 240
Ch. Höfig	CH	28.02.2020	56250-320 Teil1	
Werkstoff:				Blattformat
1.4301 (X5CrNi18-10)				A4
Gewicht 0.173 kg		Maßstab: 1:1.5	Version: 1	Blatt 2 von 4



SCHNITT C-C



Name	Signatur	Datum	Artikelnummer	Oberfläche: Geschliffen Korn 240
Ch. Höfig	CH	28.02.2020	56250-320 Teil2	
Werkstoff:				Blattformat
1.4301 (X5CrNi18-10)				A4
Gewicht 0.275 kg		Maßstab: 1:1,5	Version: 1	Blatt 3 von 4