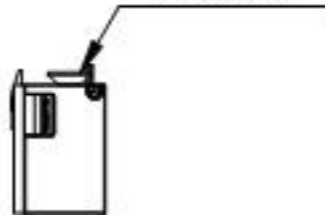
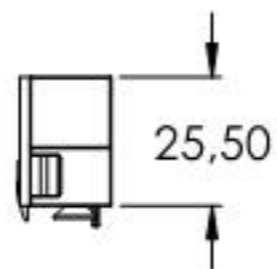
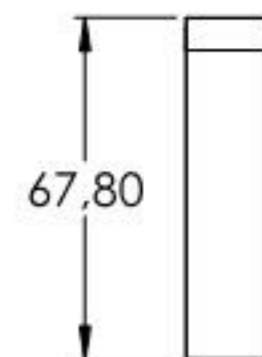
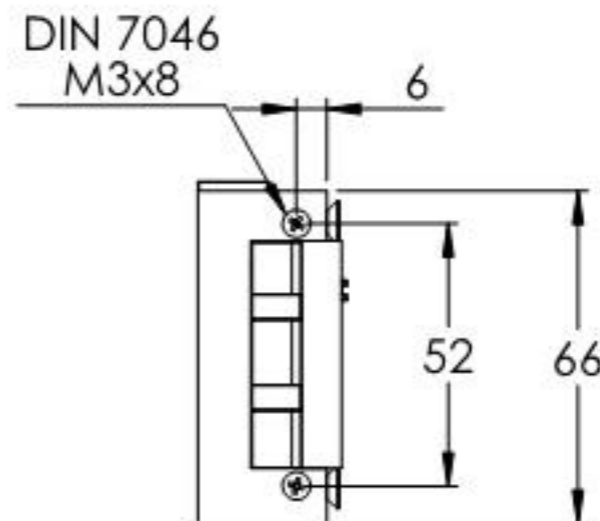
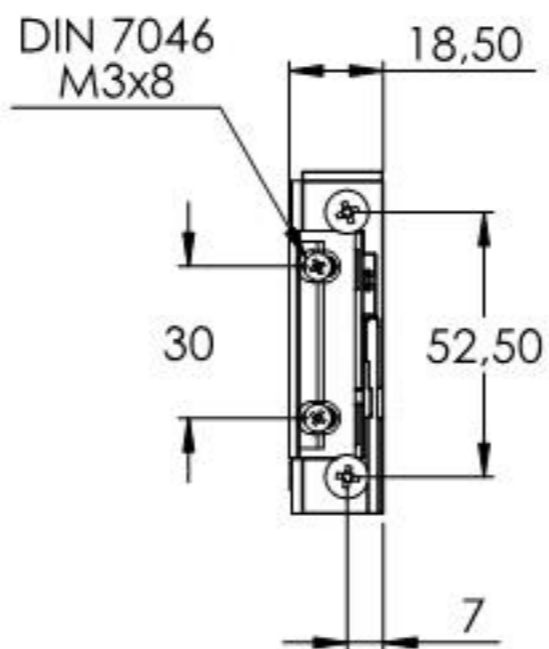
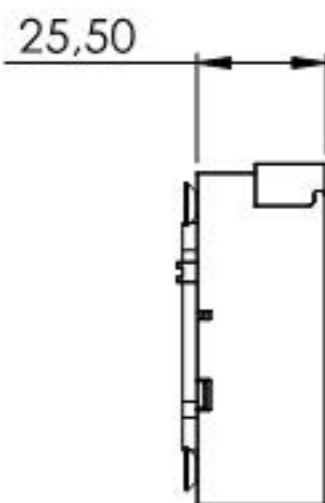


DIN 7046
M4x8



- DIN-R und DIN-L verwendbar
- mit Entriegelung



Name	Signatur	Datum	Artikelnummer	Oberfläche: Roh
Ch. Hölfig	CH	17.07.2023	118-WE	
Werkstoff: Zink AG40A (Zn-4Al-0.4Mg)				Blattformat A4
Gewicht 0,187 kg	Maßstab: 1:2	Version: 1	Blatt 1 von 1	