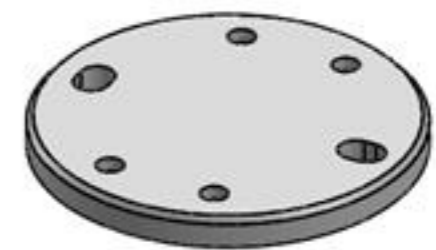
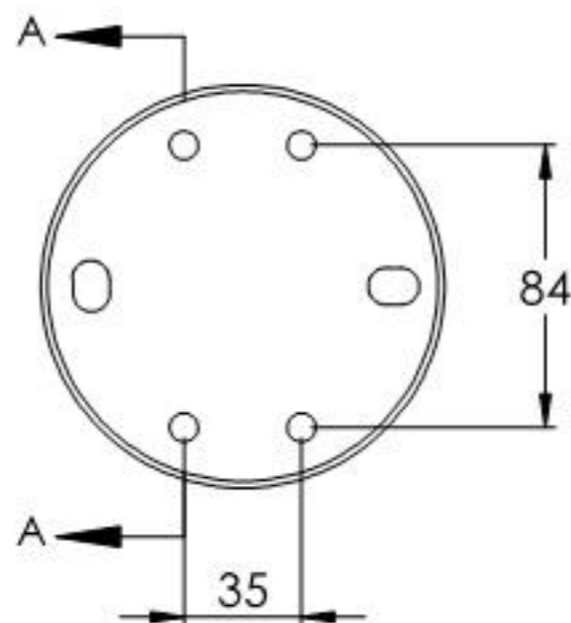
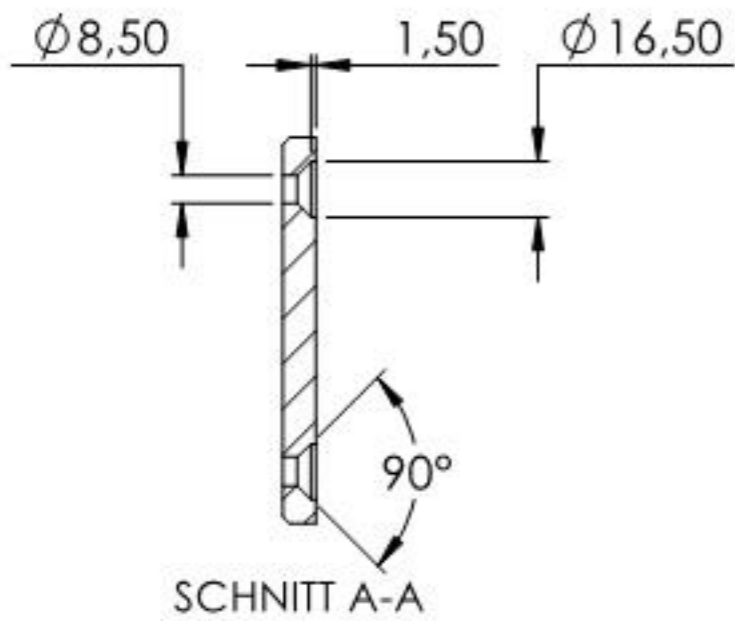
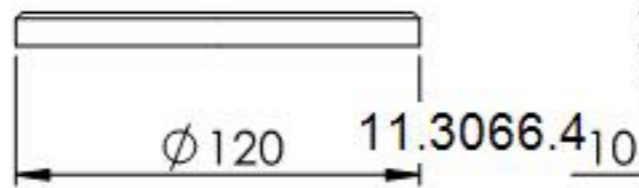
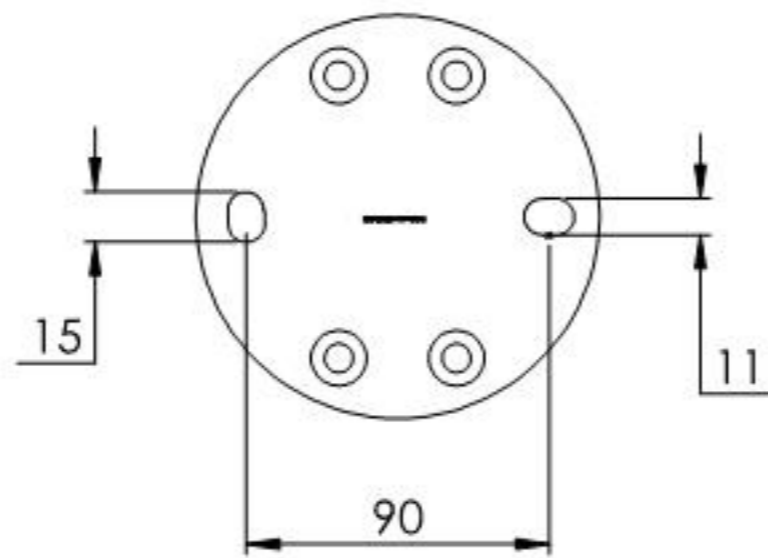
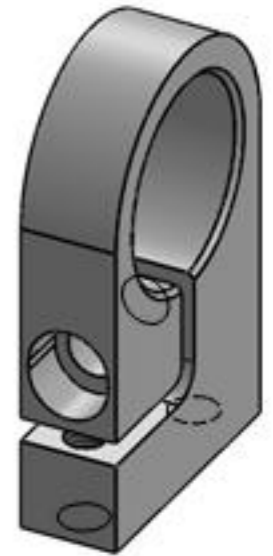
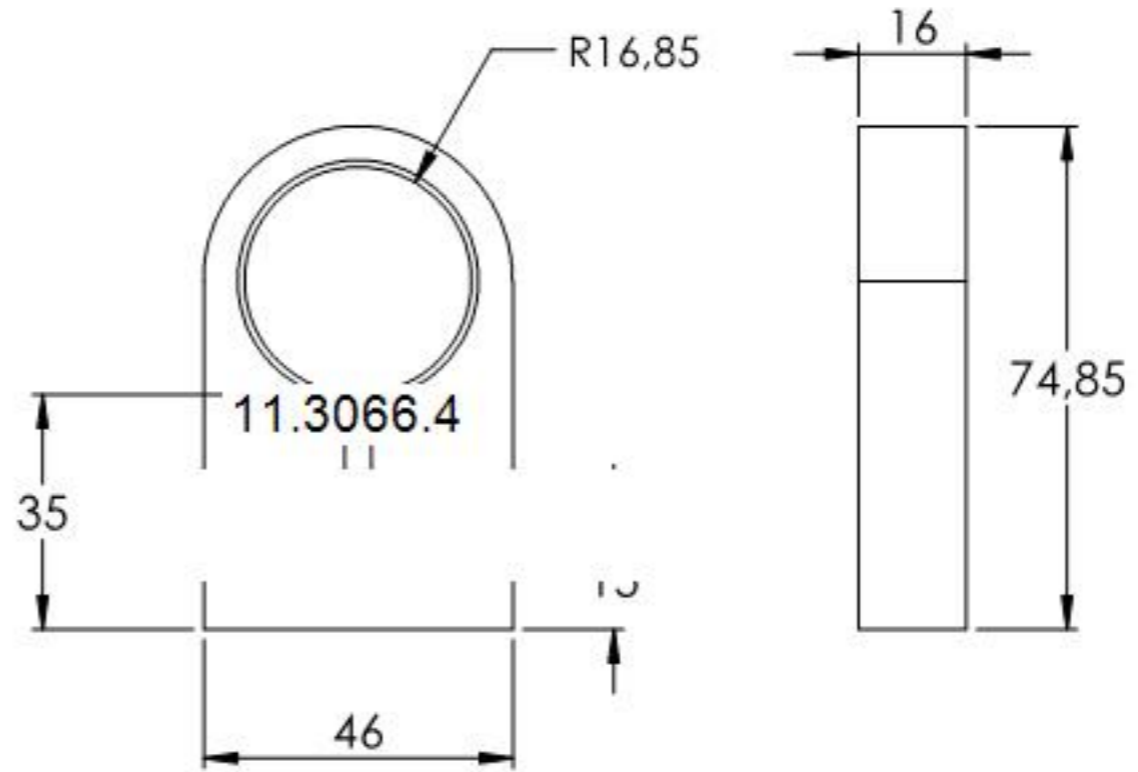
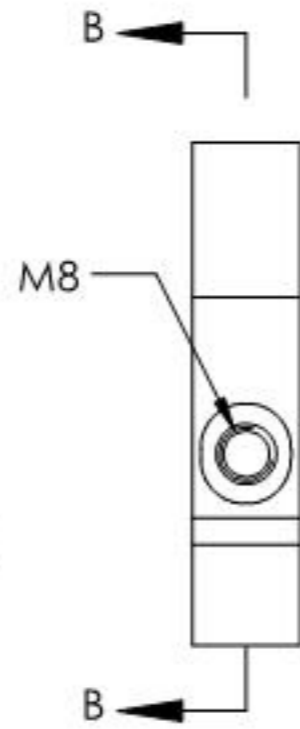
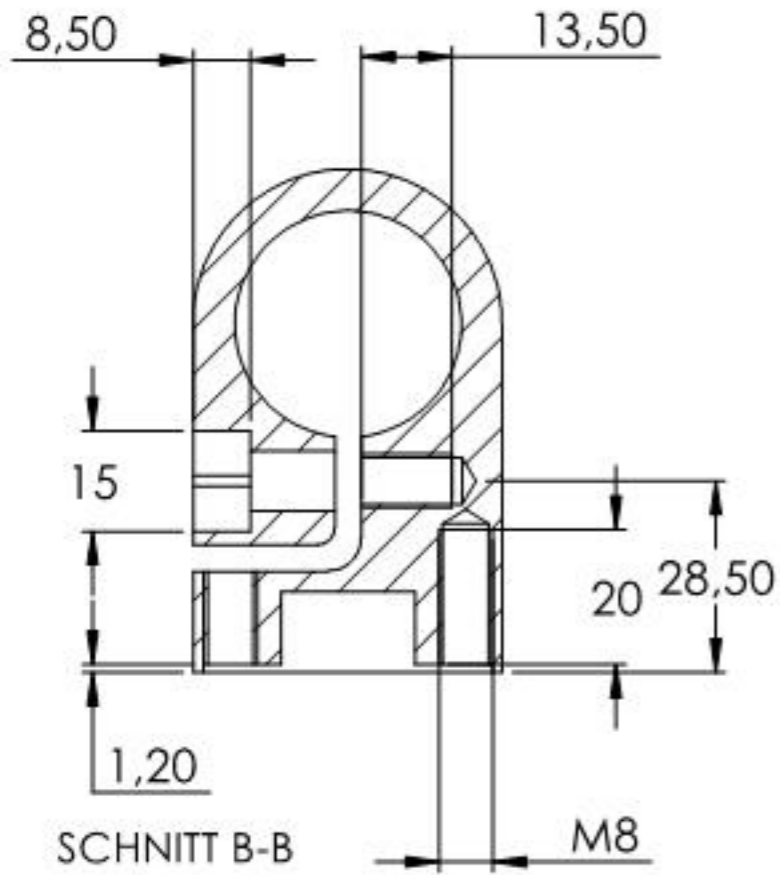
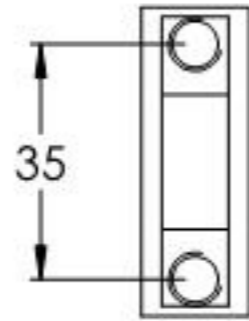


Name	Signatur	Datum	Artikelnummer	Oberfläche: Geschliffen Korn 240
Ch. H8fig	CH	09.05.2023	50139-240	
Werkstoff:		Hersteller		Blattformat
1.4301 (X5CrNi18-10)		 Feldmann <small>EDELSTAHL · ALUMINIUM · SCHWEIßSTEIN</small>		A4
Gewicht 1,280 kg		Maßstab: 1:3	Version: 1	Blatt 1 von 4



Name	Signatur	Datum	Artikelnummer	Oberfläche: Geschliffen Korn 240
Ch. H&fig	CH	09.05.2023	50139-240 Teil1	
Werkstoff:		Hersteller		Blattformat
1.4301 (X5CrNi18-10)				A4
Gewicht 0.831 kg		Maßstab: 1:3	Version: 1	Blatt 2 von 4



Name	Signatur	Datum	Artikelnummer	Oberfläche: Geschliffen Korn 240
Ch. Hölfig	CH	09.05.2023	50139-240 Teil1	
Werkstoff:		Hersteller		Blattformat
1.4301 (X5CrNi18-10)				A4
Gewicht 0.220 kg		Maßstab: 1:1.5	Version: 1	Blatt 3 von 4