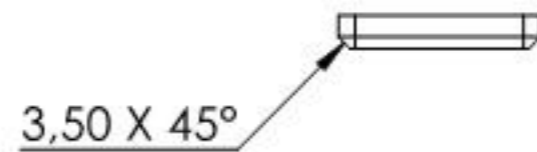
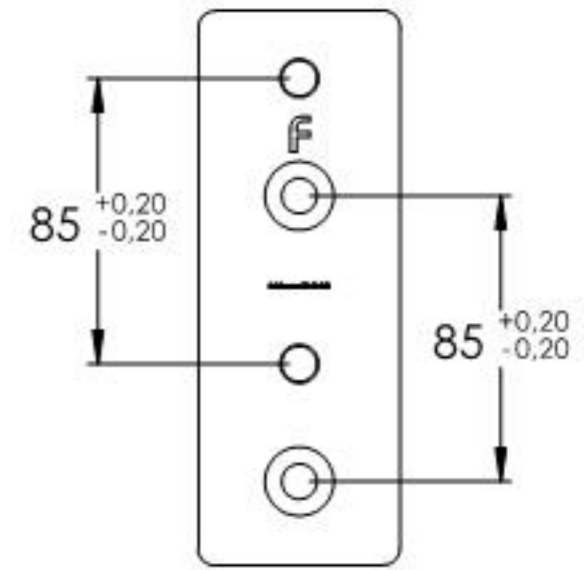
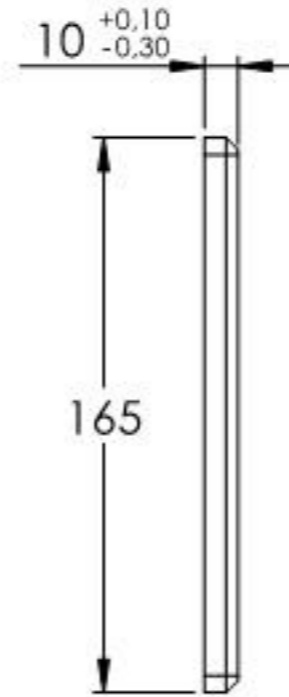
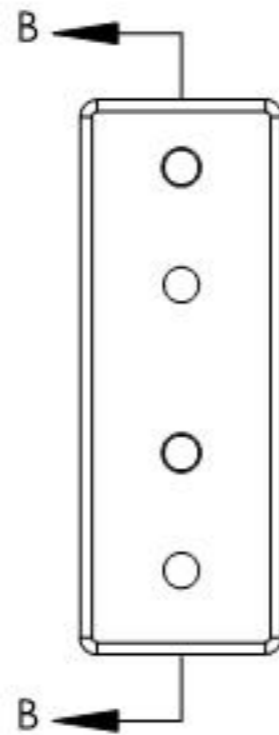
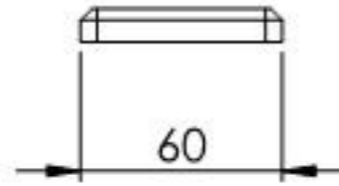
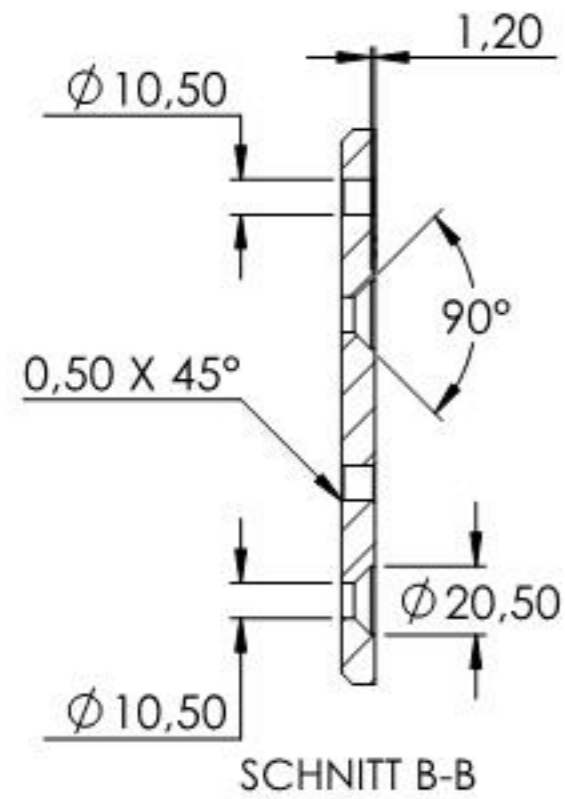
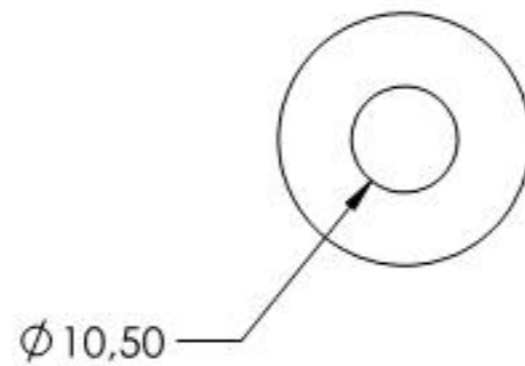
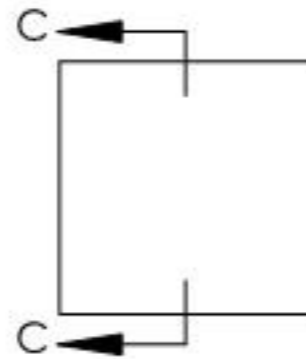
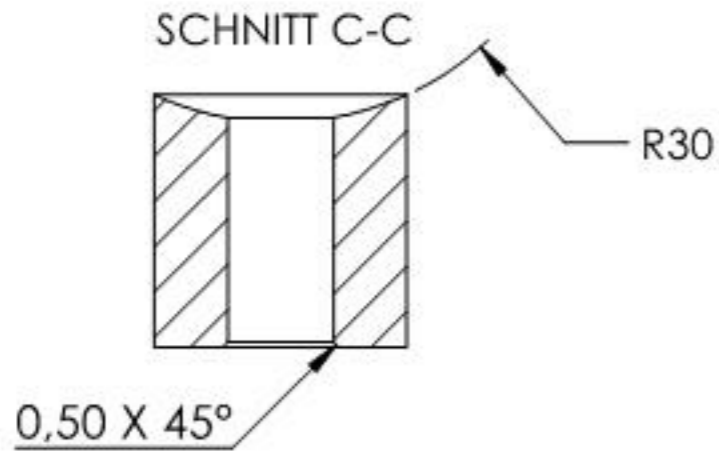
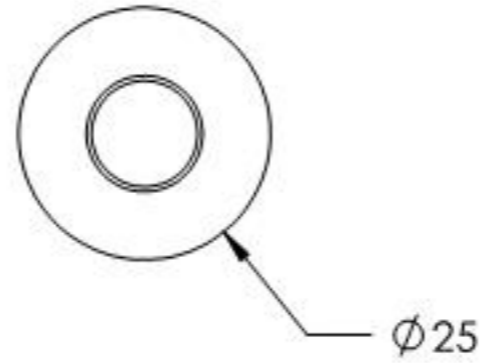


Name	Signatur	Datum	Artikelnummer	Oberfläche: Geschliffen Korn 240
Ch. Höfig	CH	09.06.2020	ξ11.3053.4	
Werkstoff:				Blattformat
1.4301 (X5CrNi18-10)				A4
Gewicht 1,746 kg		Maßstab: 1:3	Version: 1.1	Blatt 1 von 6



Name	Signatur	Datum	Artikelnummer	Oberfläche: Geschliffen Korn 240
Ch. Höfig	CH	09.06.2020	ξ 11.3053.4 1	
Werkstoff:				Blattformat
1.4301 (X5CrNi18-10)				A4
Gewicht 0.719 kg		Maßstab: 1:3	Version: 1.1	Blatt 2 von 6



Name	Signatur	Datum	Artikelnummer	Oberfläche: Geschliffen Korn 240
Ch. Höfig	CH	09.06.2020	11.3053.4 i12	
Werkstoff:				Blattformat
1.4301 (X5CrNi18-10)				A4
Gewicht 0,076 kg		Maßstab: 1:1	Version: 1.1	Blatt 3 von 6