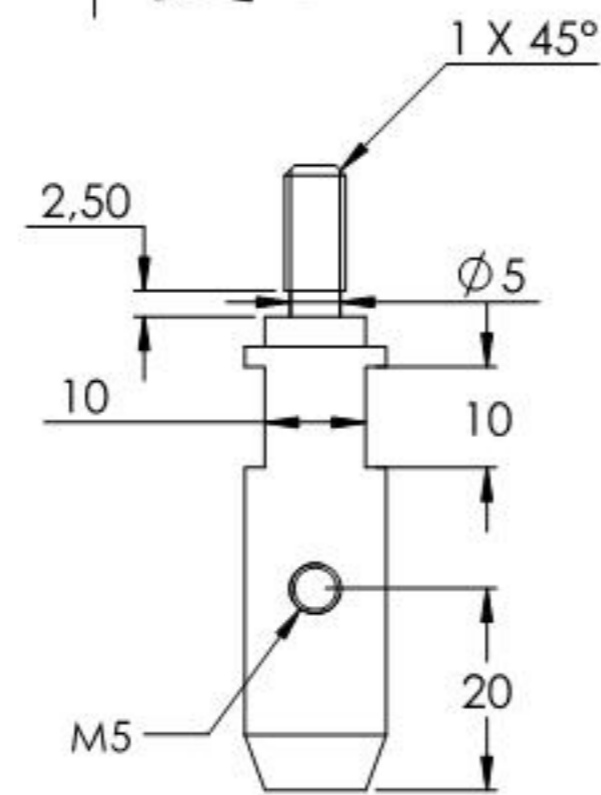
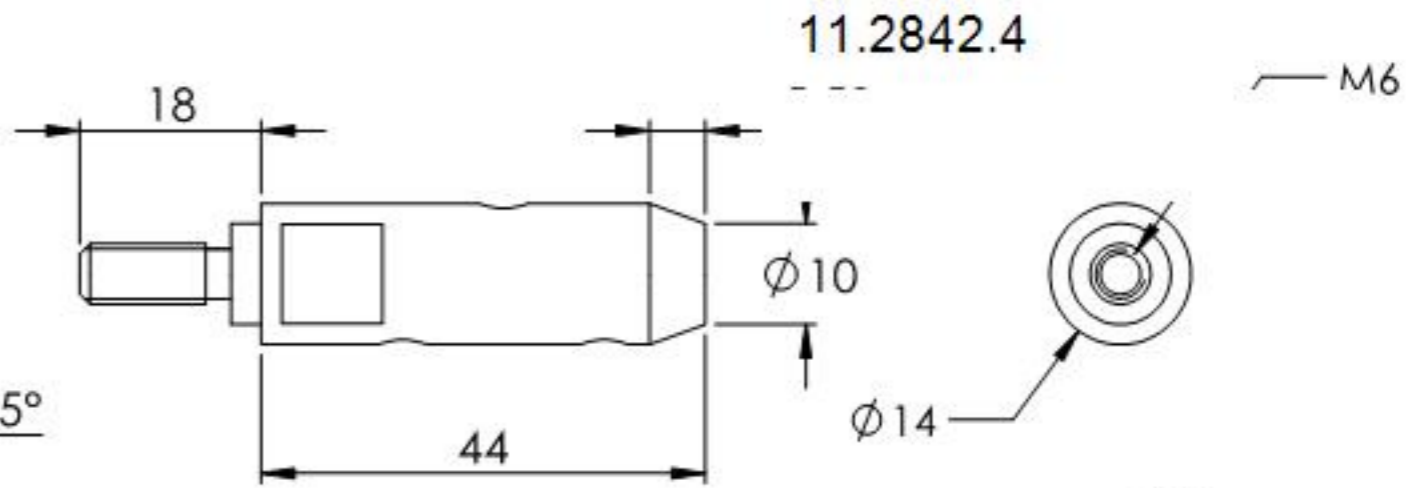
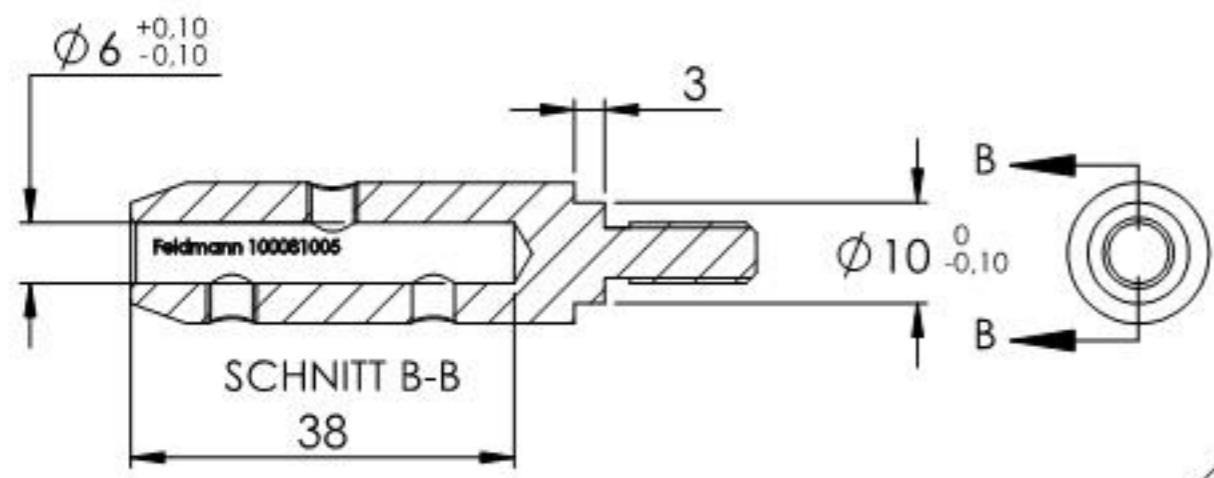
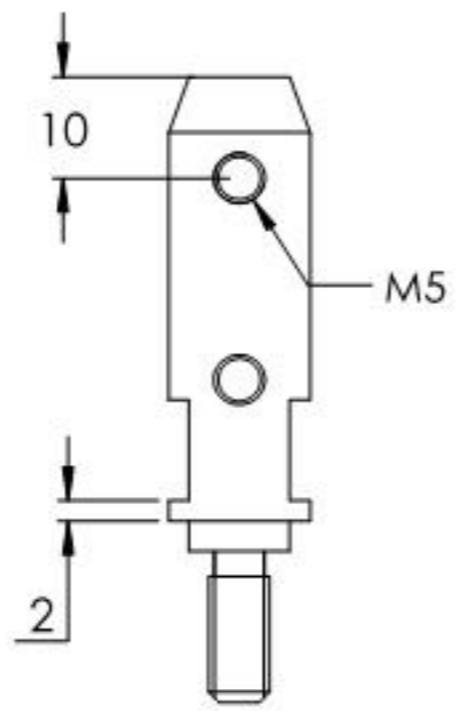
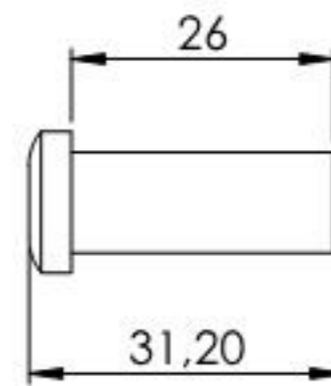
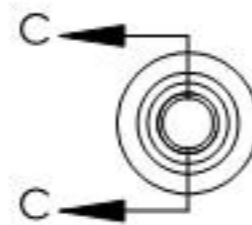
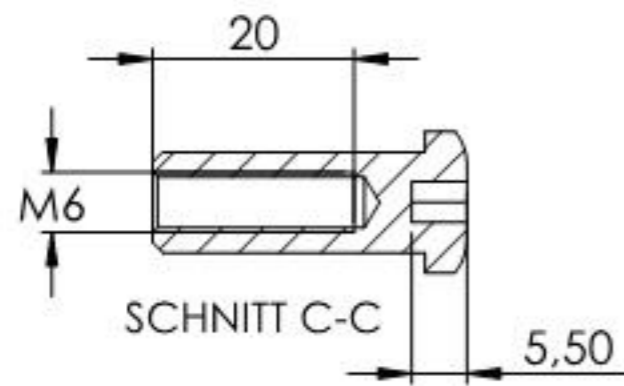
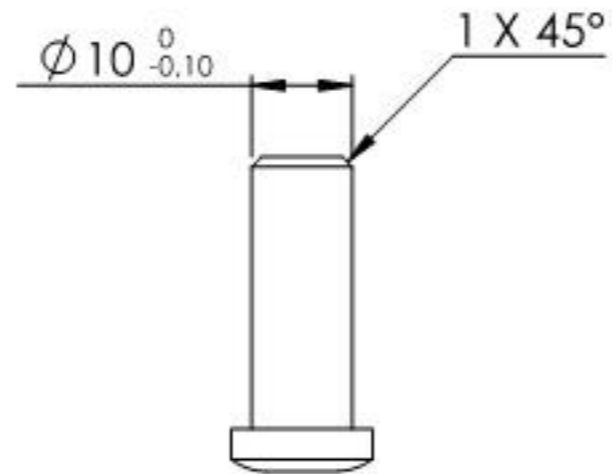


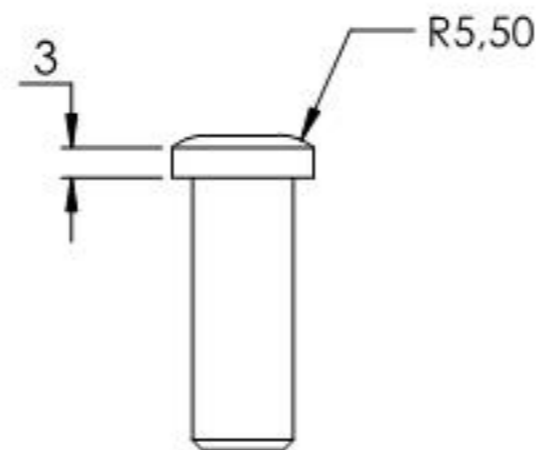
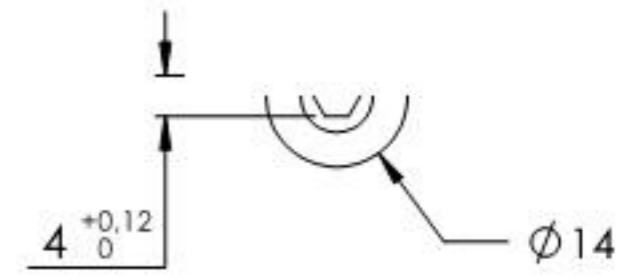
Name	Signatur	Datum	Artikelnummer	Oberfläche: Geschliffen Korn 240
Ch. Höfig	CH	03.11.2020	100081005	
Werkstoff: 1.4301 (X5CrNi18-10)			Hersteller	Blattformat
			 <b>Feldmann</b> EDLSTAHLE · ALUMINIUM · SCHWEIßEISEN	A4
Gewicht 0.070 kg			Maßstab: 1:1.25 Version: 1	Blatt 1 von 5



Name	Signatur	Datum	Artikelnummer	Oberfläche: Geschliffen Korn 240
Ch. Höfig	CH	03.11.2020	100081005 Teil1	
Werkstoff:		Hersteller		Blattformat
1.4301 (X5CrNi18-10)		 <small>EDLSTAHL-ALUMINIUM-SCHWEIßSTEIN</small>		A4
Gewicht 0.045 kg		Maßstab: 1:1	Version: 1	Blatt 2 von 5



11.2842.4



Name	Signatur	Datum	Artikelnummer	Oberfläche: Geschliffen Korn 240
Ch. Höfig	CH	03.11.2020	10008100X Teil2	
Werkstoff:		Hersteller		Blattformat
1.4301 (X5CrNi18-10)		 <small>EDLSTAHL-ALUMINIUM-SCHWEIßSTEIN</small>		A4
Gewicht 0,017 kg		Maßstab: 1:1	Version: 1	Blatt 3 von 5