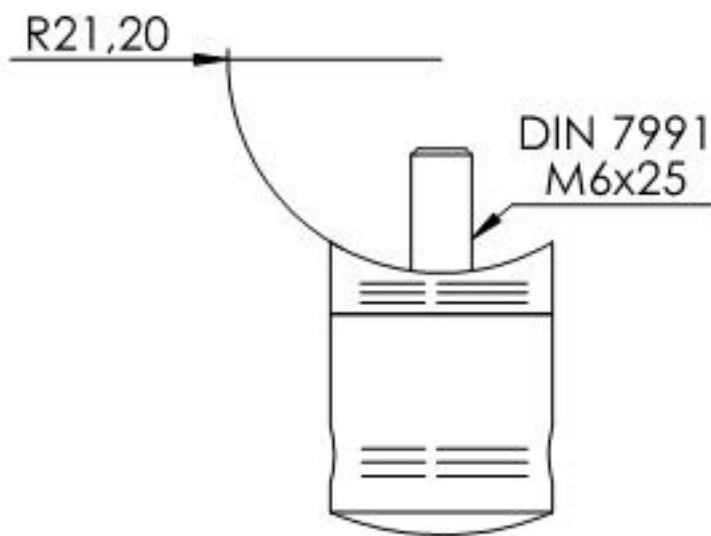
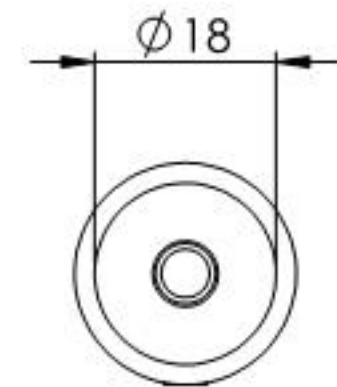
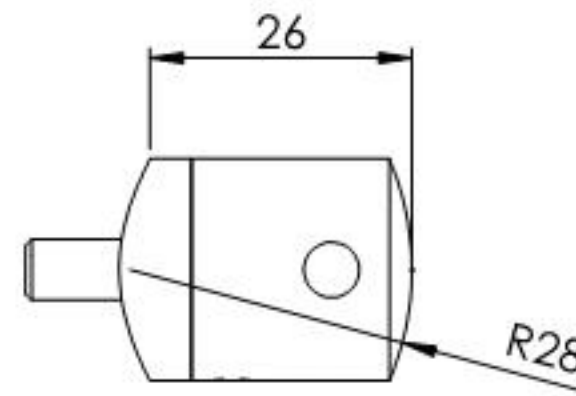
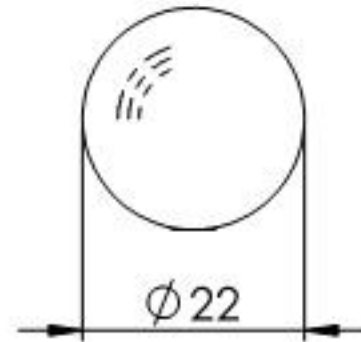
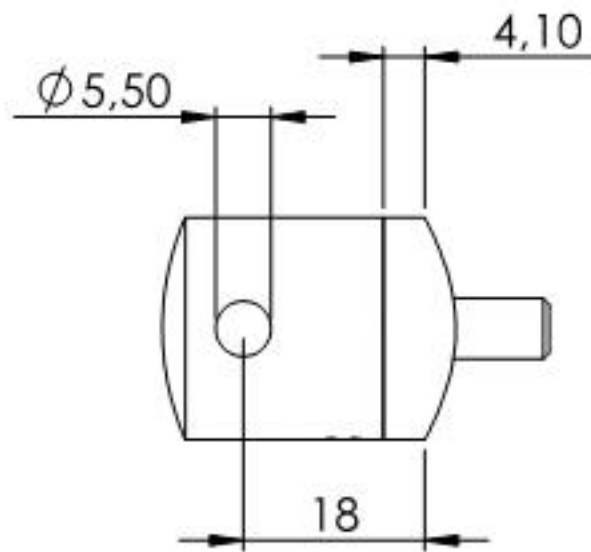
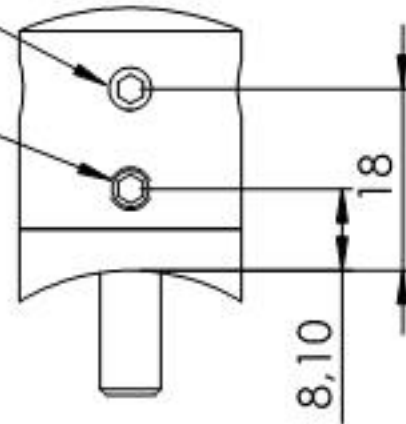
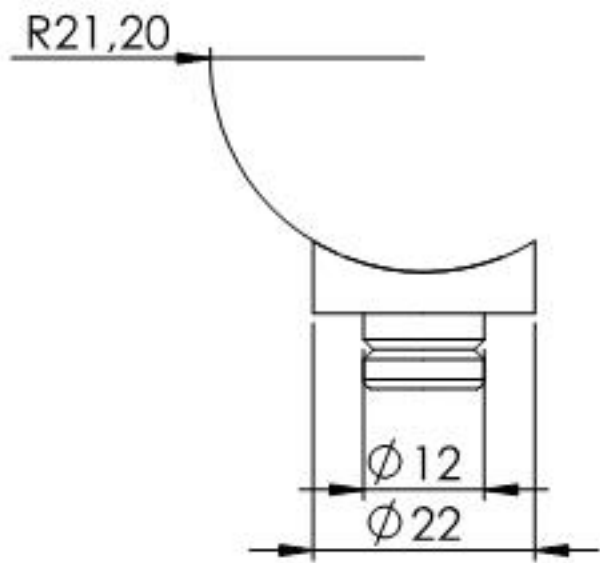
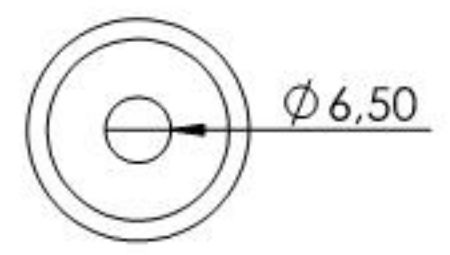
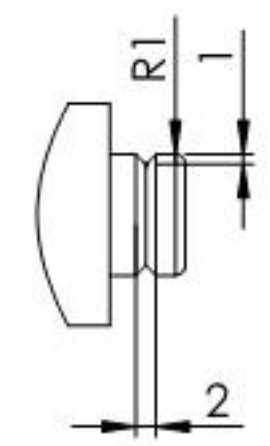
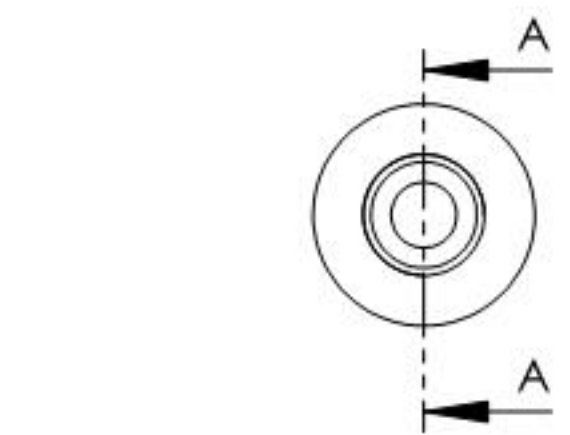
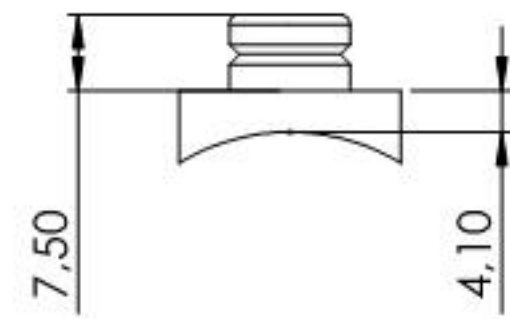
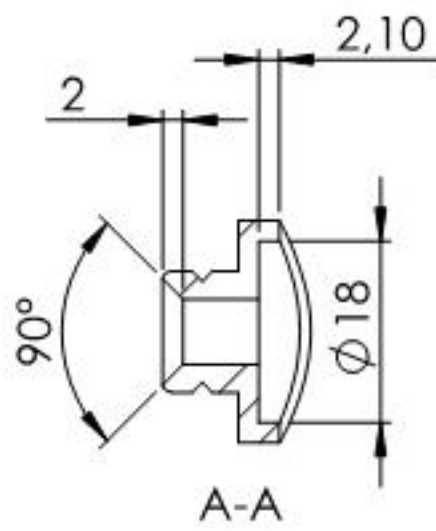


DIN 913
M5x8

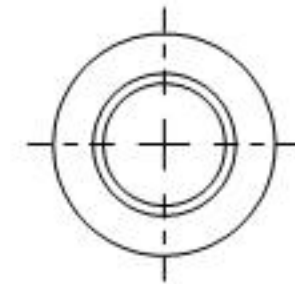
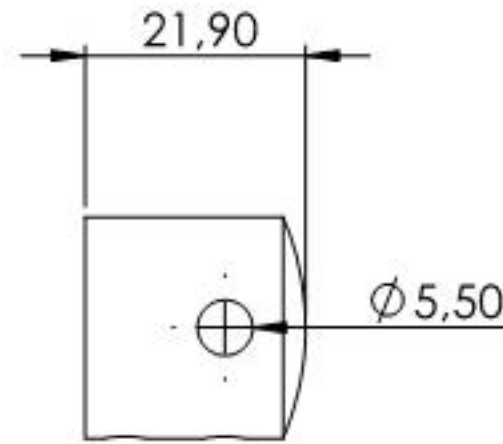
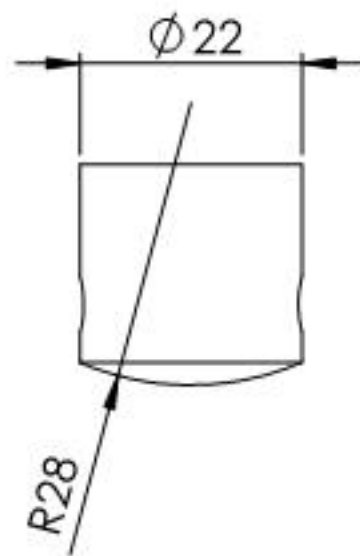
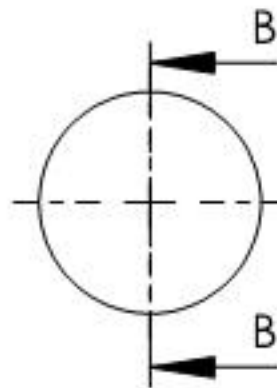
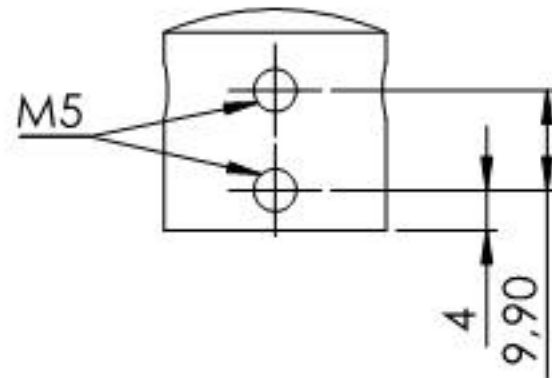
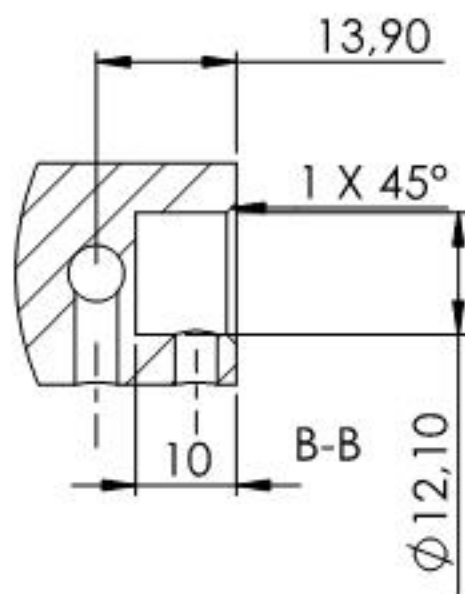
DIN 914
M5x5



Name	Signatur	Datum	Artikelnummer	Oberfläche: Geschliffen Korn 240
Ch. Höfig	CH	01.08.2017	11.2833.44	
Werkstoff:				Blattformat
1.4301 (X5CrNi18-10)				A4
Gewicht 0,068 kg		Maßstab: 1:1	Blatt 1 von 4	



Name	Signatur	Datum	Artikelnummer	Oberfläche: Geschliffen Korn 240
Ch. Höfig	CH	01.08.2017	11.2833.4X Teil1	
Werkstoff:				Blattformat
1.4301 (X5CrNi18-10)				A4
Gewicht 0.013 kg		Maßstab: 1:1	Blatt 2 von 4	



Name	Signatur	Datum	Artikelnummer	Oberfläche: Geschliffen Korn 240
Ch. Höfig	CH	01.08.2017	11.2833.44 Teil2	
Werkstoff:				Blattformat
1.4301 (X5CrNi18-10)				A4
Gewicht 0.048 kg		Massstab: 1:1	Blatt 3 von 4	