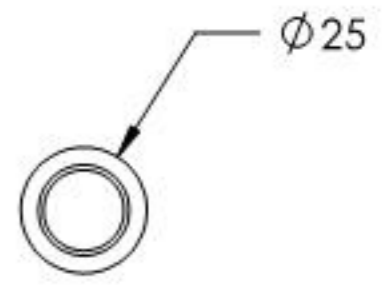
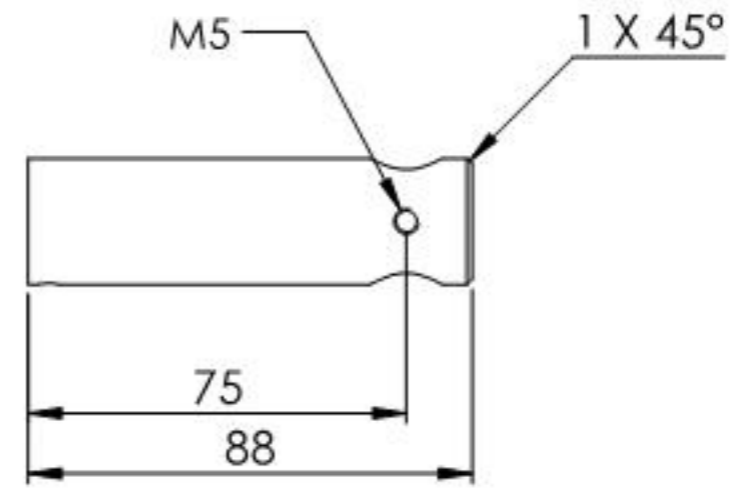
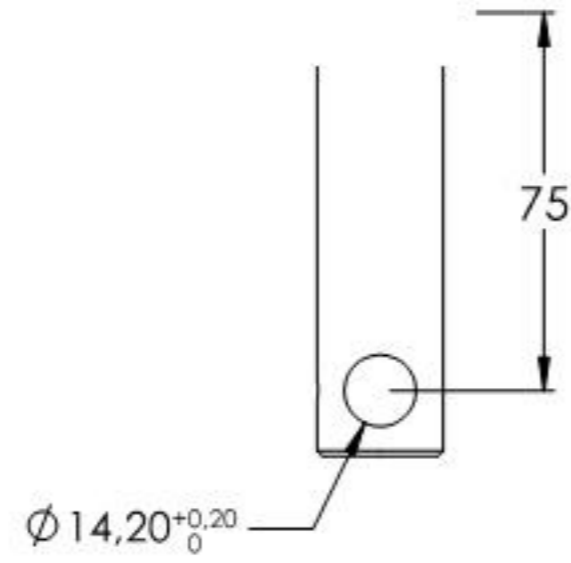
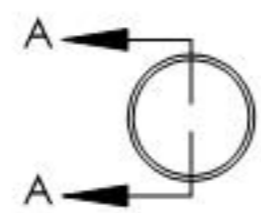
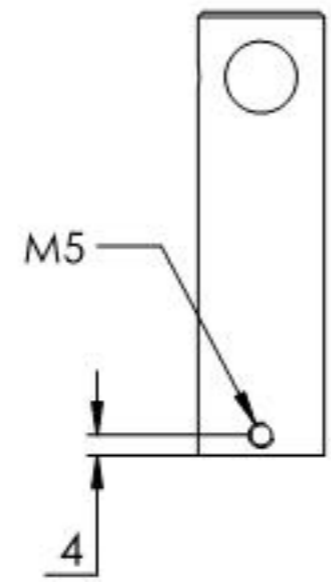
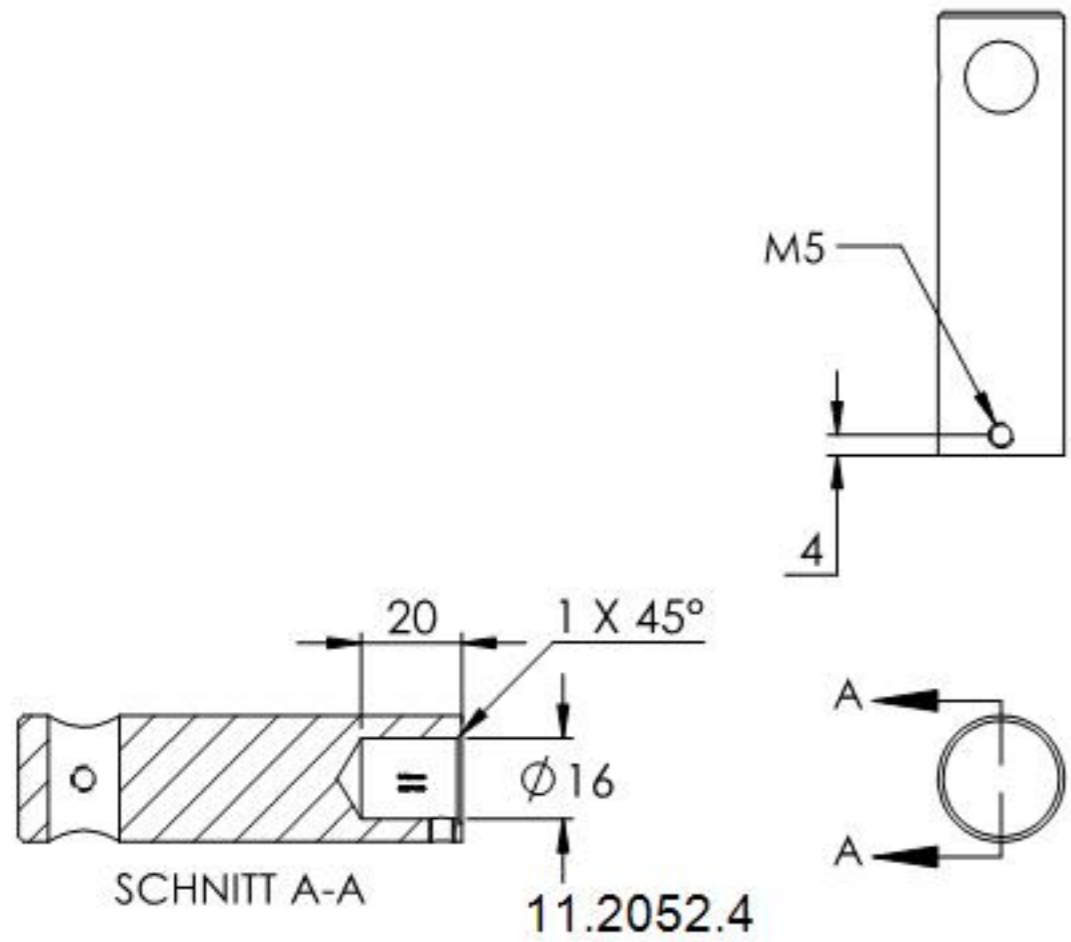
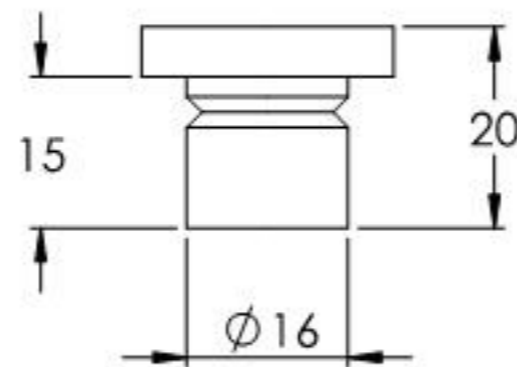
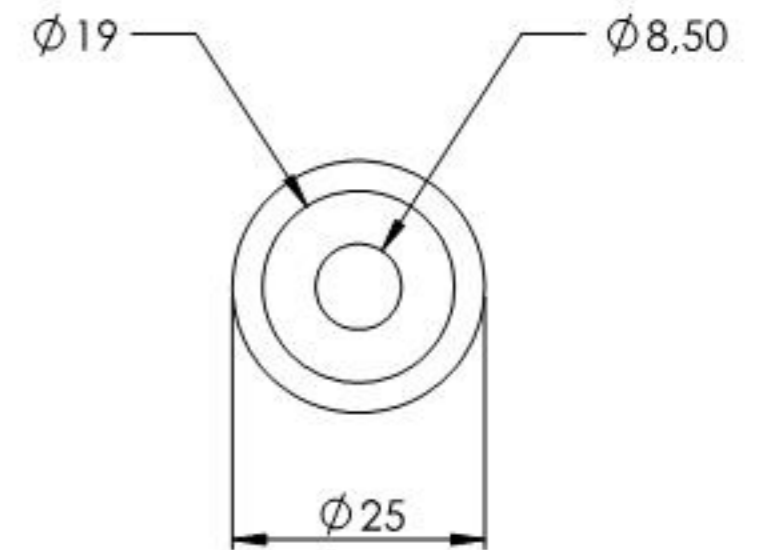
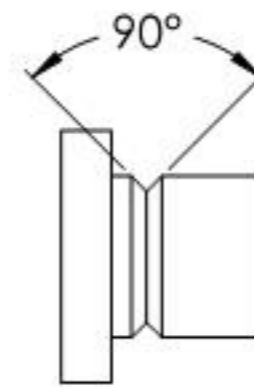
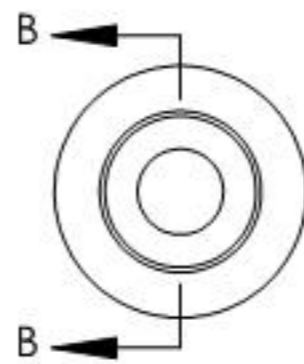
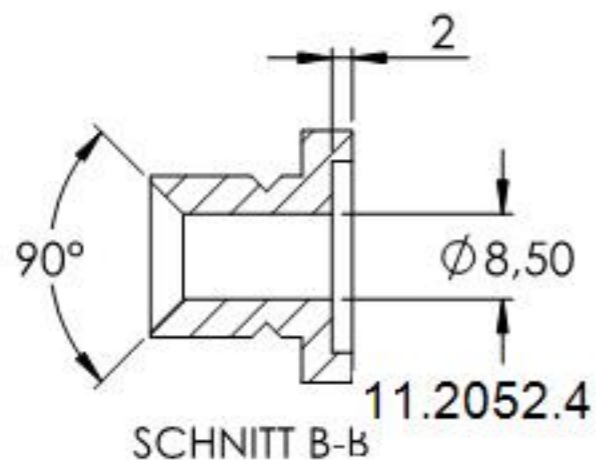
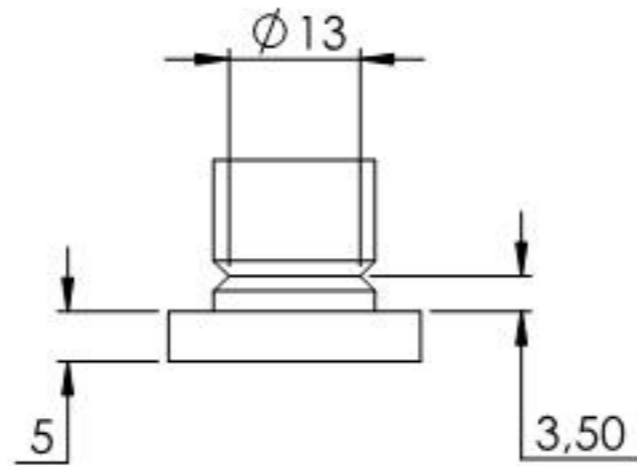


Name	Signatur	Datum	Artikelnummer	Oberfläche: Geschliffen Korn 240	
Ch. Höfig	CH	14.12.2020	50372-240		
Werkstoff: 1.4301 (X5CrNi18-10)			Hersteller  Feldmann EDLSTAHL-ALUMINIUM-SCHWEIßEISEN		Blattformat A4
Gewicht 0.461 kg		Maßstab: 1:2	Version: 1	Blatt 1 von 6	



Name	Signatur	Datum	Artikelnummer	Oberfläche: Geschliffen Korn 240
Ch. Höfig	CH	14.12.2020	50372-240 Teil1	
Werkstoff:		Hersteller		Blattformat
1.4301 (X5CrNi18-10)		 <b>Feldmann</b> <small>EDLSTAHL-ALUMINIUM-SCHWEISSEN</small>		A4
Gewicht 0.275 kg		Maßstab: 1:2	Version: 1	Blatt 2 von 6



Name	Signatur	Datum	Artikelnummer	Oberfläche: Geschliffen Korn 240
Ch. Höfig	CH	14.12.2020	50372-240 Teil2	
Werkstoff:		Hersteller		Blattformat
1.4301 (X5CrNi18-10)				A4
Gewicht 0.028 kg		Maßstab: 1:1	Version: 1	Blatt 3 von 6