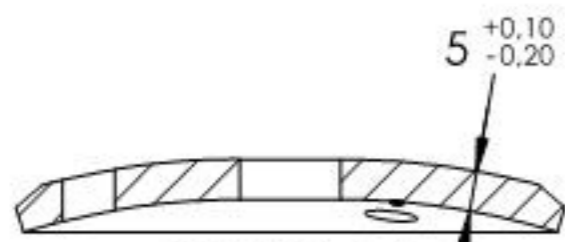
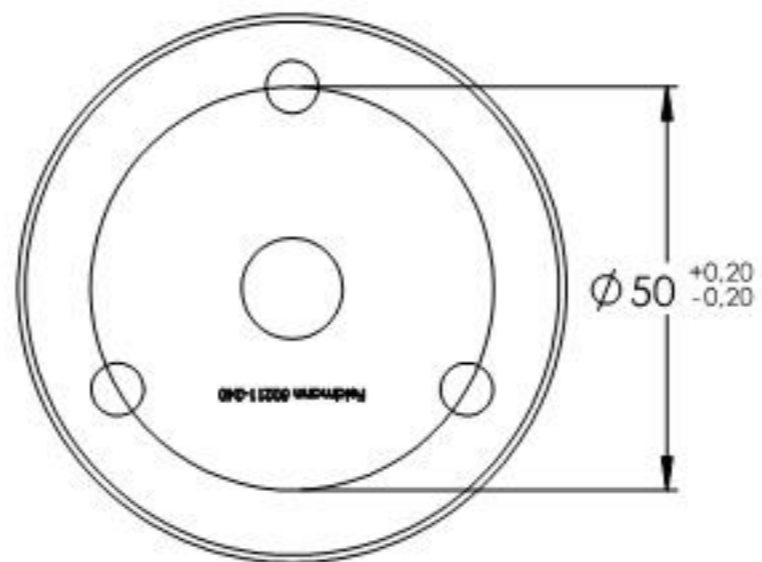


DIN 7991  
M6x12

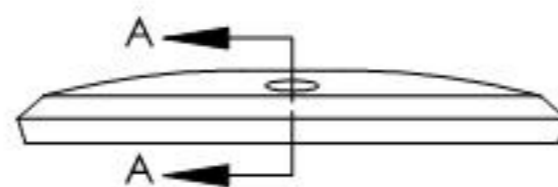
DIN 7991  
M8x16

Name	Signatur	Datum	Artikelnummer	Oberfläche: Geschliffen Korn 240
Ch. Höfig	CH	16.09.2020	<b>11.2037.4</b>	
Werkstoff:				Blattformat
1.4301 (X5CrNi18-10)				<b>A4</b>
Gewicht 0.335 kg		Maßstab: 1:2	Version: 1	Blatt 1 von 5



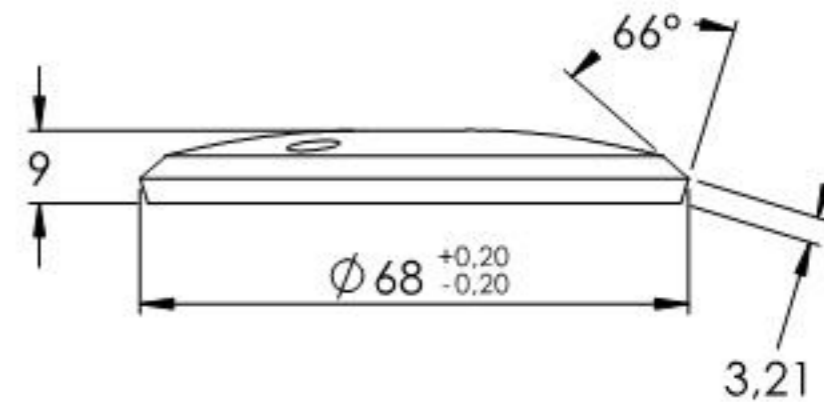
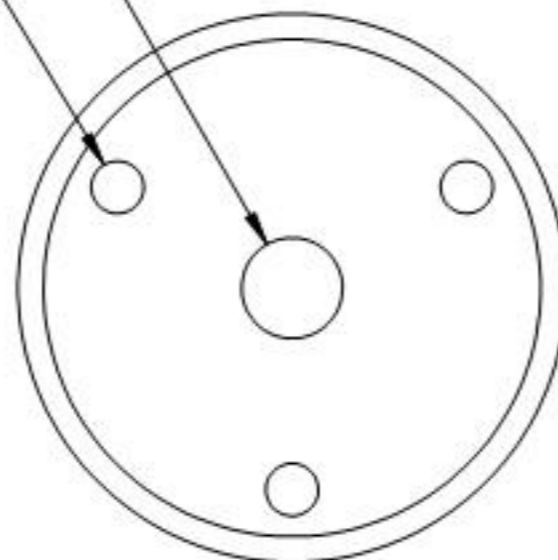
SCHNITT A-A

5  $^{+0.10}_{-0.20}$

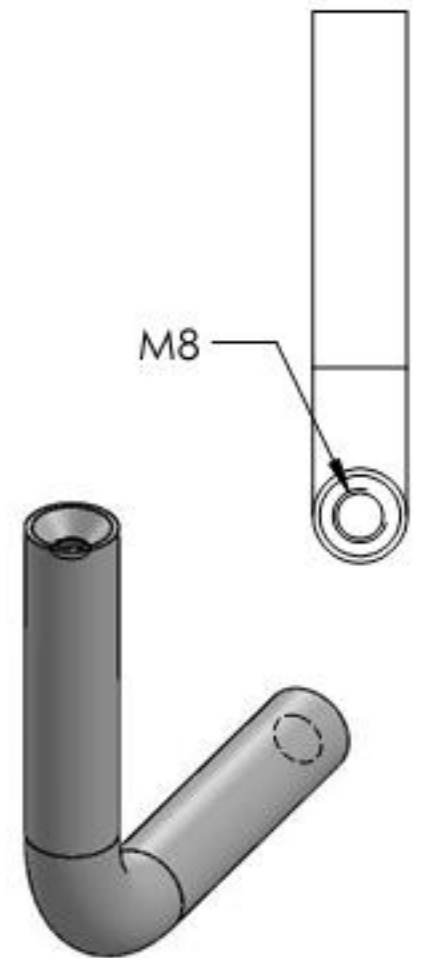
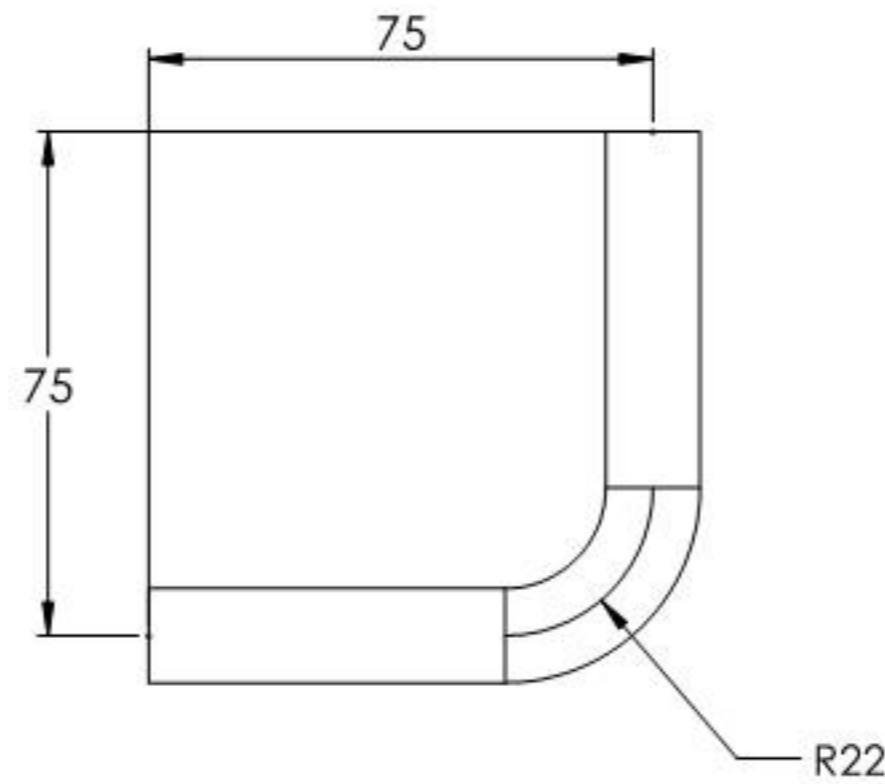
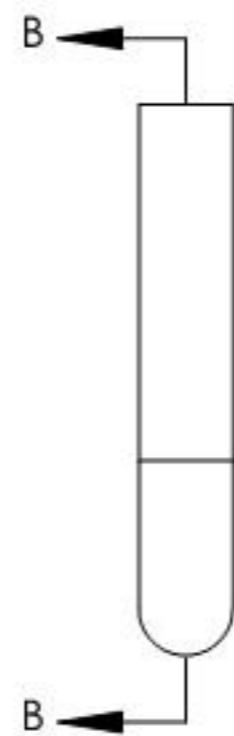
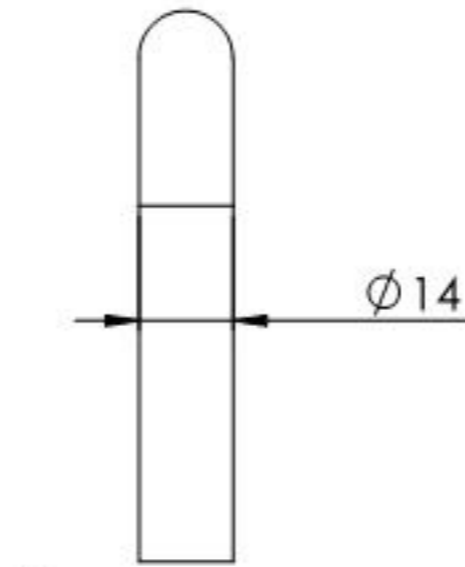
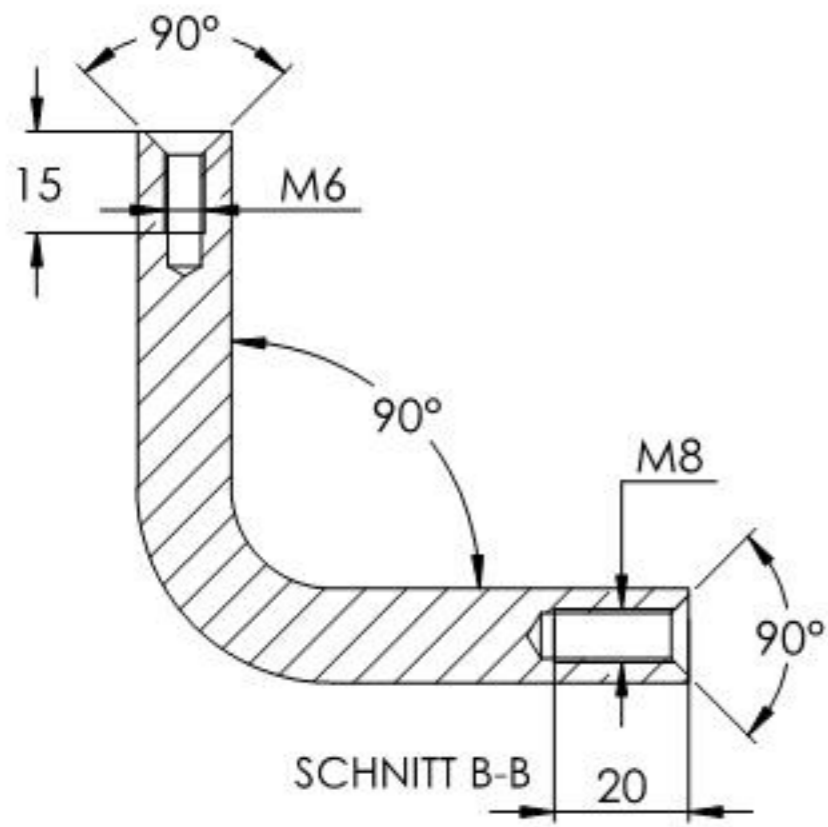


$\varnothing 12,50$

$\varnothing 6,50$



Name	Signatur	Datum	Artikelnummer	Oberfläche: Geschliffen Korn 240
Ch. Höfig	CH	16.09.2020	11.2037.4eil1	
Werkstoff:				Blattformat
1.4301 (X5CrNi18-10)				A4
Gewicht 0.130 kg		Maßstab: 1:1.25 Version: 1		Blatt 2 von 5



Name	Signatur	Datum	Artikelnummer	Oberfläche: Geschliffen Korn 240
Ch. Höfig	CH	16.09.2020	11.2037.4eil2	
Werkstoff:				Blattformat
1.4301 (X5CrNi18-10)				A4
Gewicht 0.159 kg		Maßstab: 1:1.5	Version: 1	Blatt 3 von 5