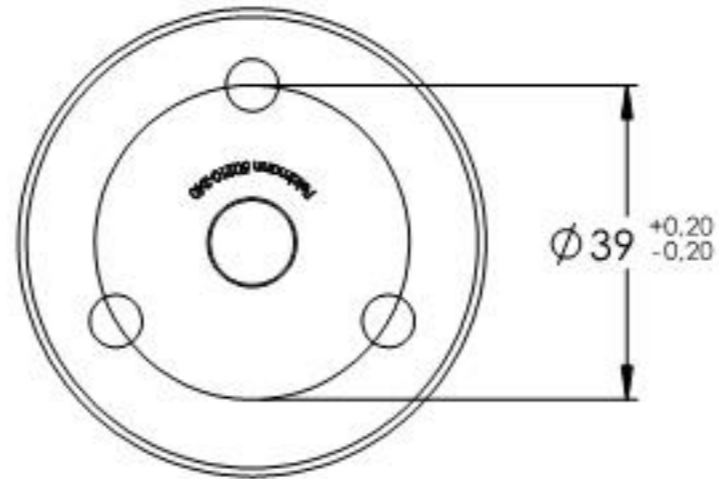
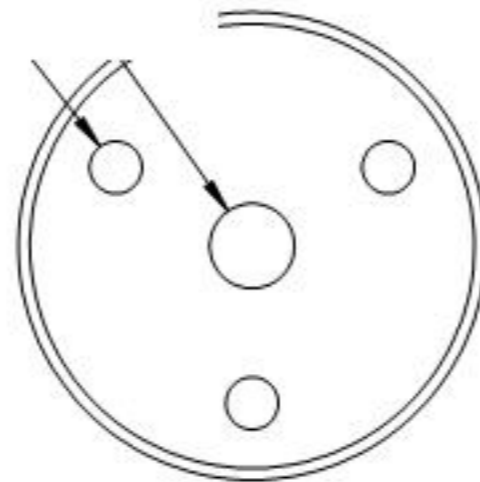
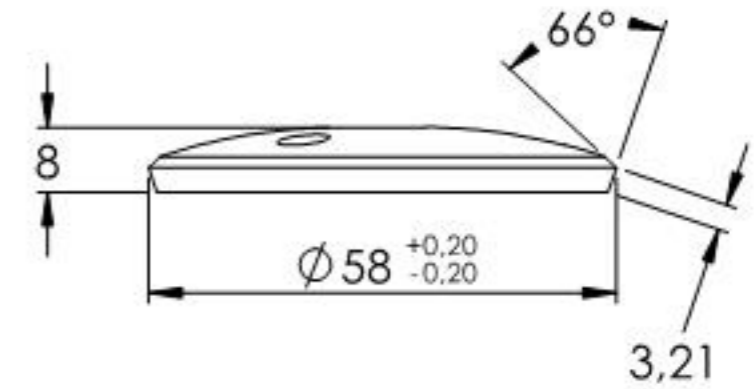
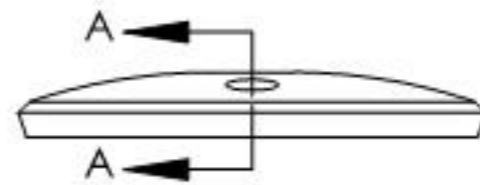


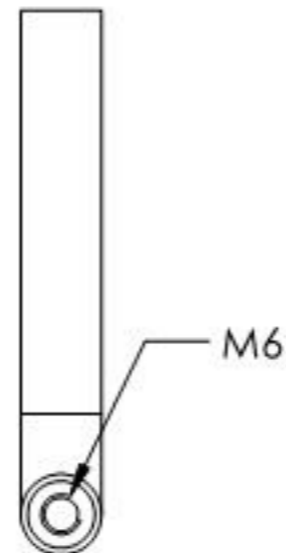
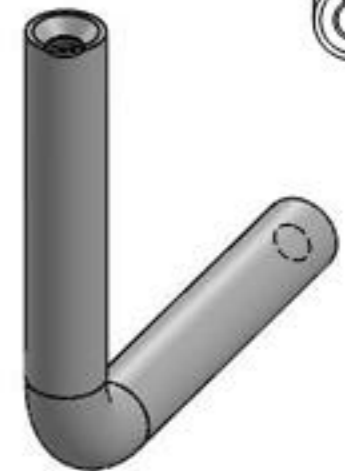
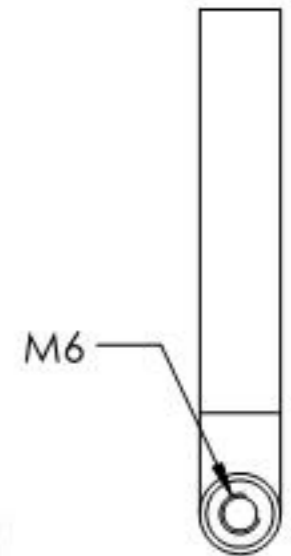
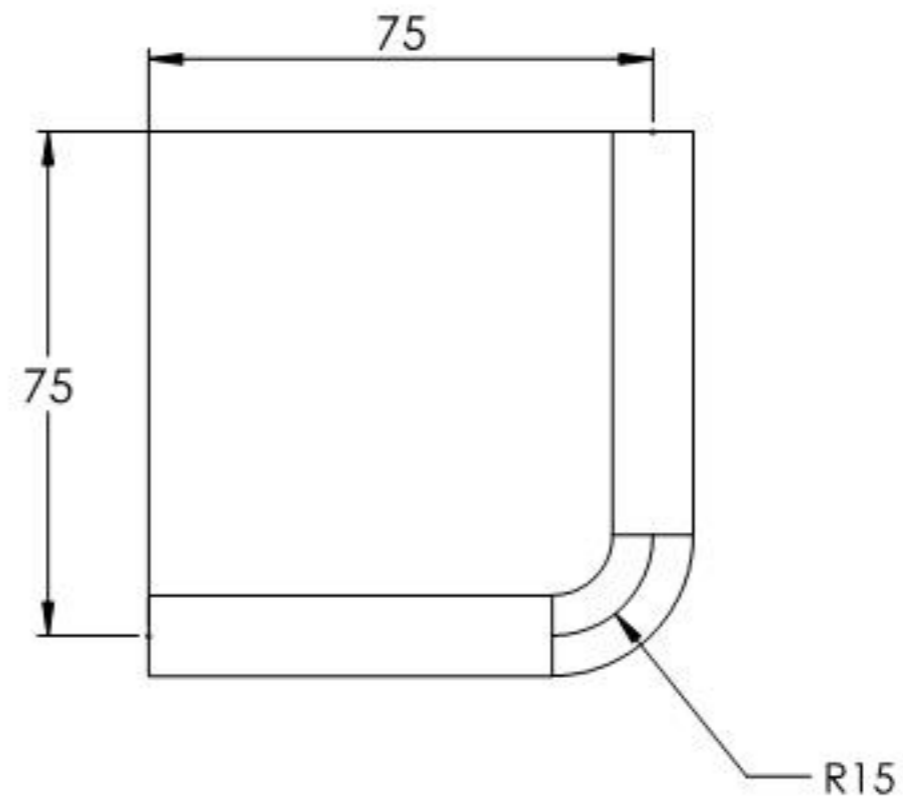
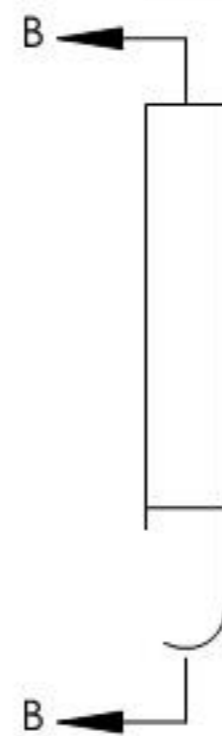
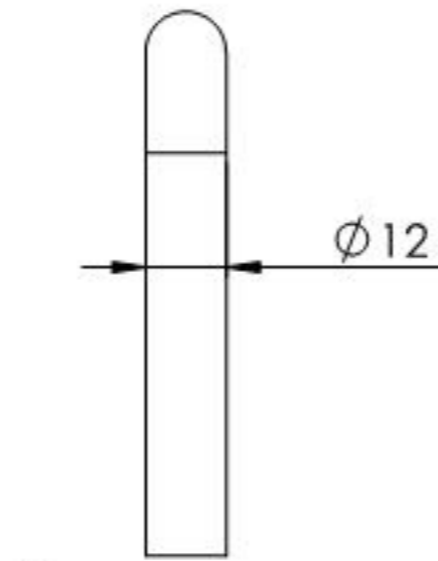
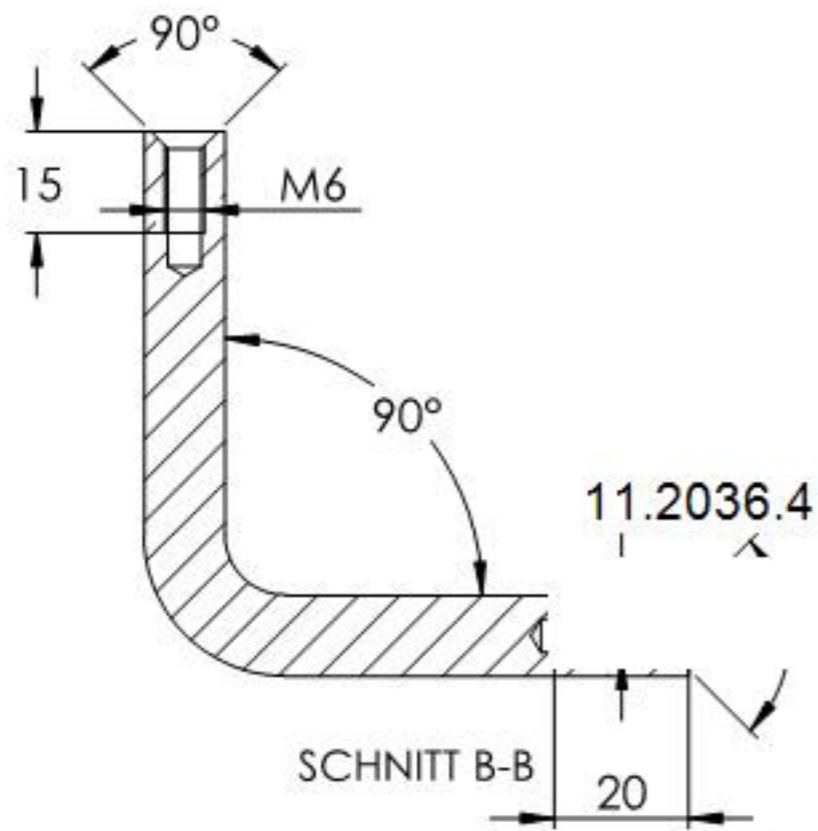
Name	Signatur	Datum	Artikelnummer	Oberfläche: Geschliffen Korn 240
Ch. Höfig	CH	16.09.2020	50210-240	
Werkstoff: 1.4301 (X5CrNi18-10)		Hersteller:  Feldmann EDLSTAHL-ALUMINIUM-SCHWEIßSTEIN		Blattformat: A4
Gewicht 0.239 kg		Maßstab: 1:2	Version: 1	Blatt 1 von 5



11.2036.450



Name	Signatur	Datum	Artikelnummer	Oberfläche: Geschliffen Korn 240
Ch. Höfig	CH	16.09.2020	50210-240 Teil1	
Werkstoff:		Hersteller		Blattformat
1.4301 (X5CrNi18-10)		 <small>EDLSTAHLE · ALUMINIUM · SCHWEIßEISEN</small>		A4
Gewicht 0,076 kg		Maßstab: 1:1,25 Version: 1		Blatt 2 von 5



Name	Signatur	Datum	Artikelnummer	Oberfläche: Geschliffen Korn 240
Ch. Höfig	CH	16.09.2020	50210-240 Teil2	
Werkstoff:		Hersteller		Blattformat
1.4301 (X5CrNi18-10)		 <b>Feldmann</b> <small>EDLSTAHL-ALUMINIUM-SCHWEIßEISEN</small>		A4
Gewicht 0,121 kg		Maßstab: 1:1,5	Version: 1	Blatt 3 von 5