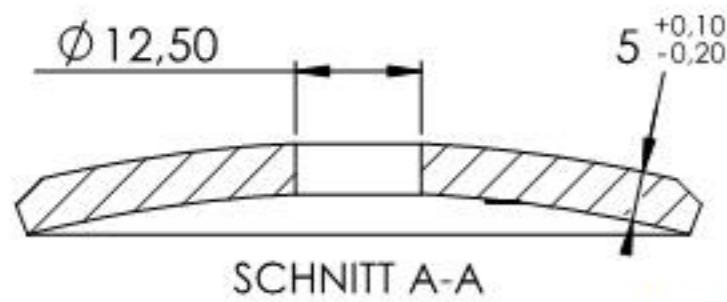
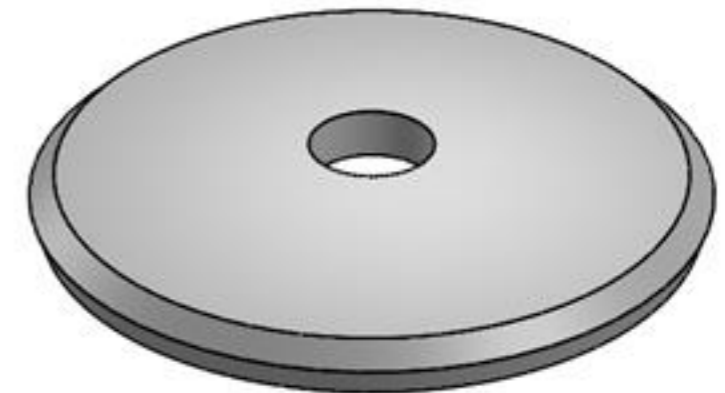
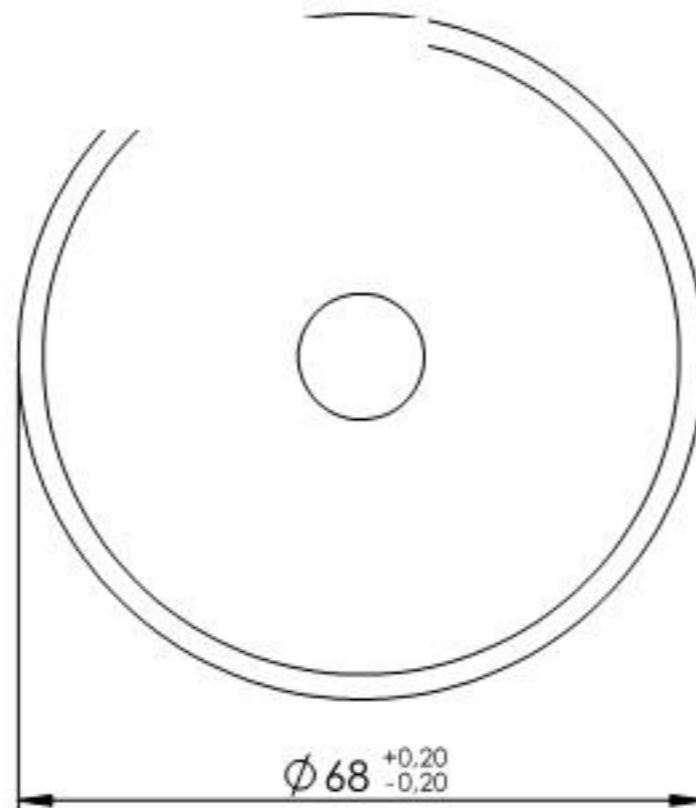
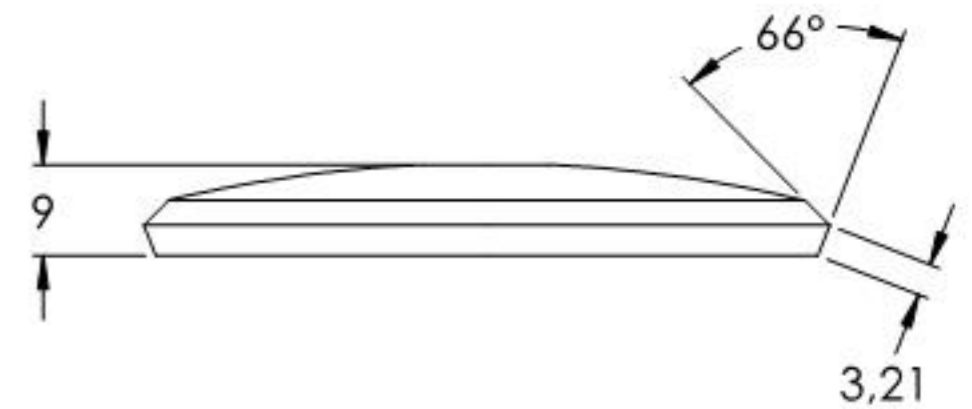
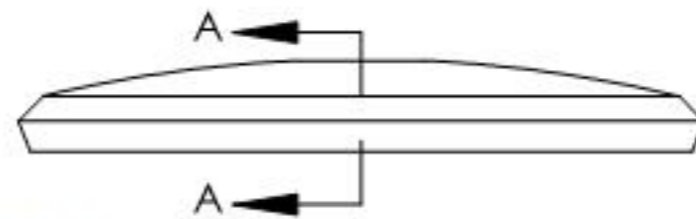


Name	Signatur	Datum	Artikelnummer	Oberfläche: Geschliffen Korn 240
Ch. Höfig	CH	28.09.2020	50197-240	
Werkstoff: 1.4301 (X5CrNi18-10)		Hersteller  Feldmann EDLSTAHL-ALUMINIUM-SCHWEIßSTEIN		Blattformat A4
Gewicht 0.398 kg		Maßstab: 1:2.5	Version: 1	Blatt 1 von 7

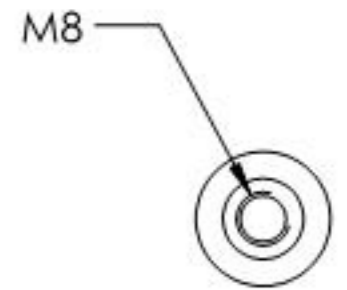
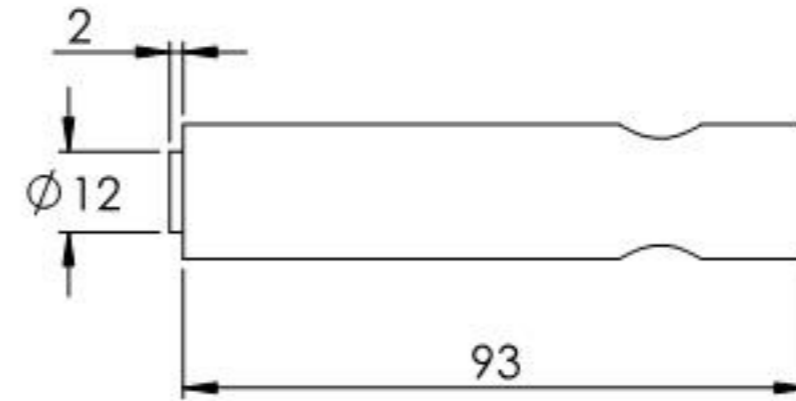
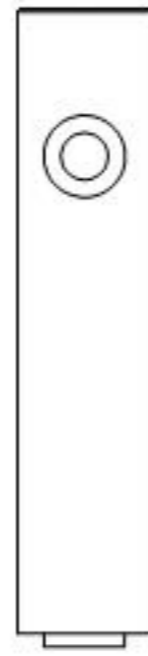
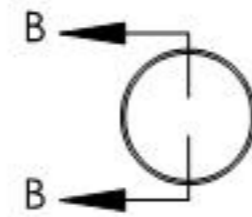
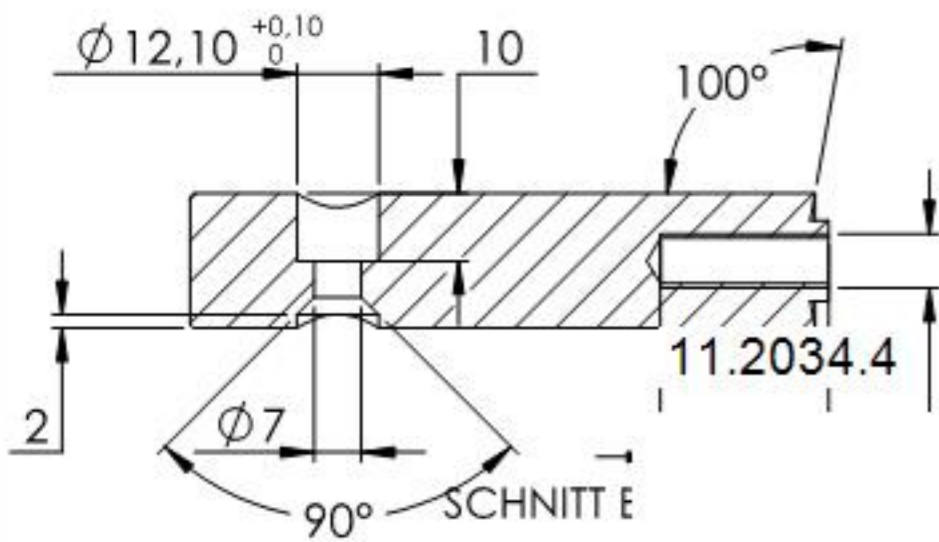


SCHNITT A-A

11.2034.4



Name	Signatur	Datum	Artikelnummer	Oberfläche: Geschliffen Korn 240
Ch. Höfig	CH	28.09.2020	50197-240 Teil1	
Werkstoff:		Hersteller		Blattformat
1.4301 (X5CrNi18-10)		 <small>EDLSTAHLE · ALUMINIUM · SCHWEIßEISEN</small>		A4
Gewicht 0.134 kg		Maßstab: 1:1	Version: 1	Blatt 2 von 7



Name	Signatur	Datum	Artikelnummer	Oberfläche: Geschliffen Korn 240
Ch. Höfig	CH	28.09.2020	50197-240 Teil2	
Werkstoff: 1.4301 (X5CrNi18-10)		Hersteller  Feldmann EDLSTAHLE-ALUMINIUM-SCHWEIßEISEN		Blattformat A4
Gewicht 0.211 kg		Maßstab: 1:1.5	Version: 1	Blatt 3 von 7