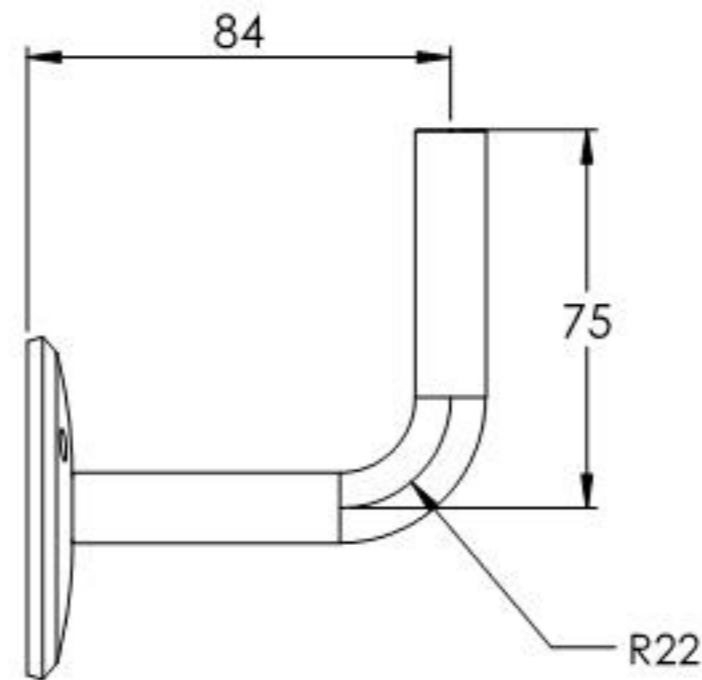
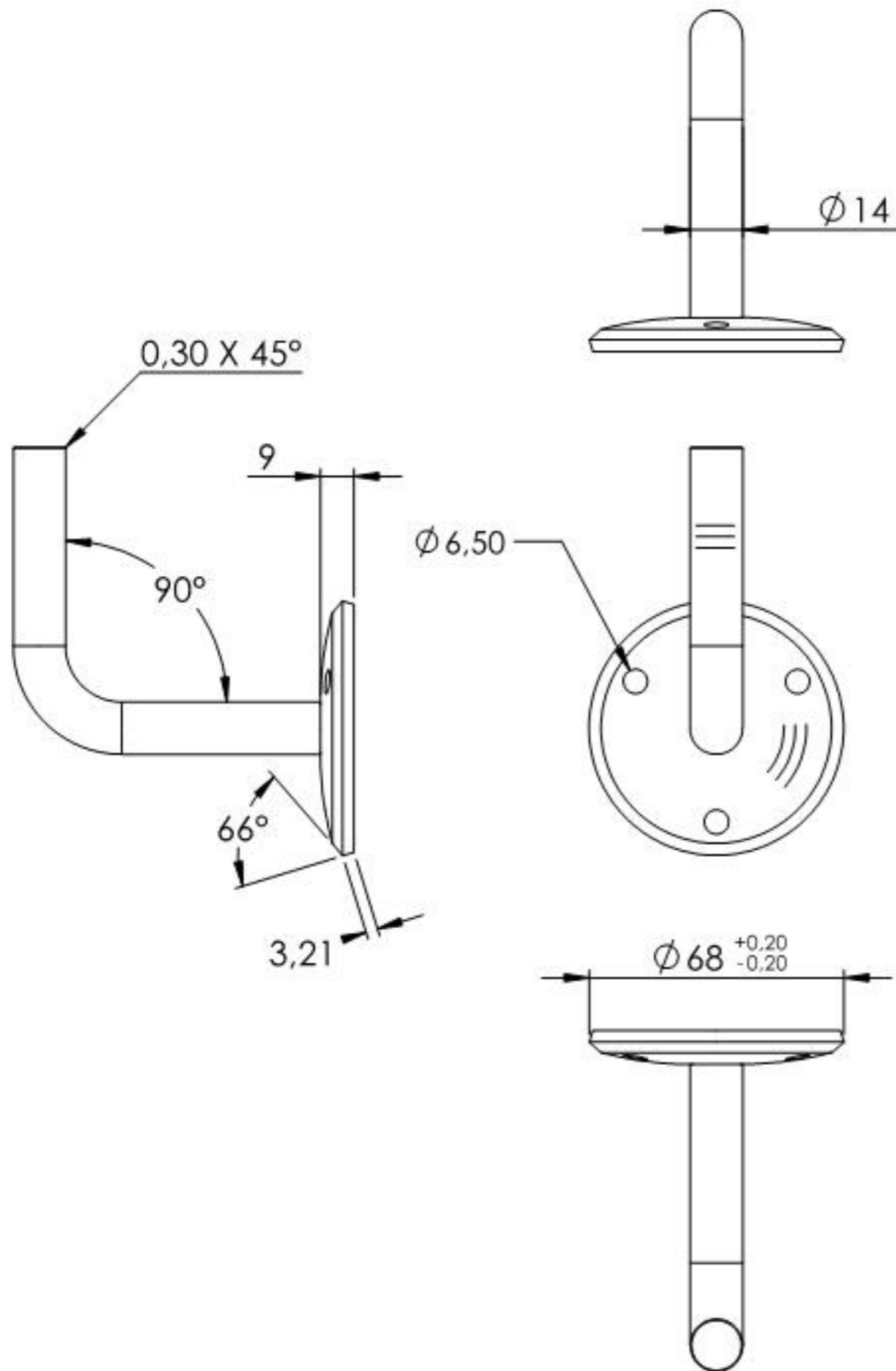
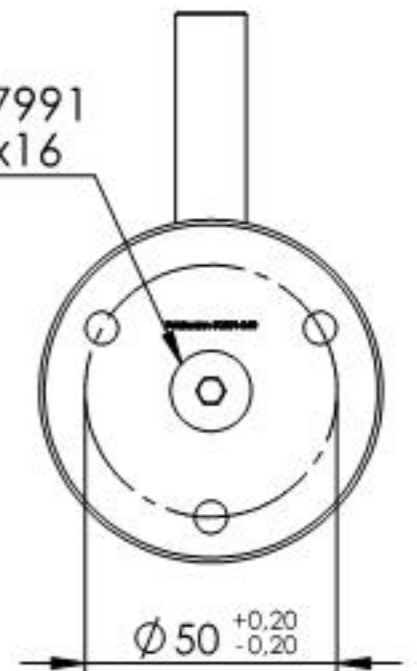


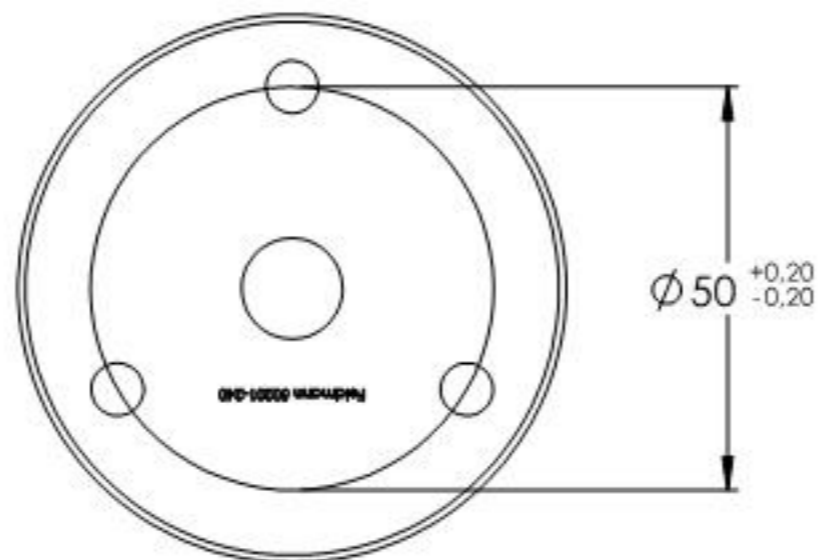
11.2016.4



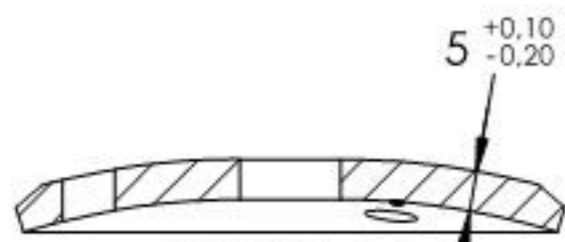
DIN 7991
M8x16



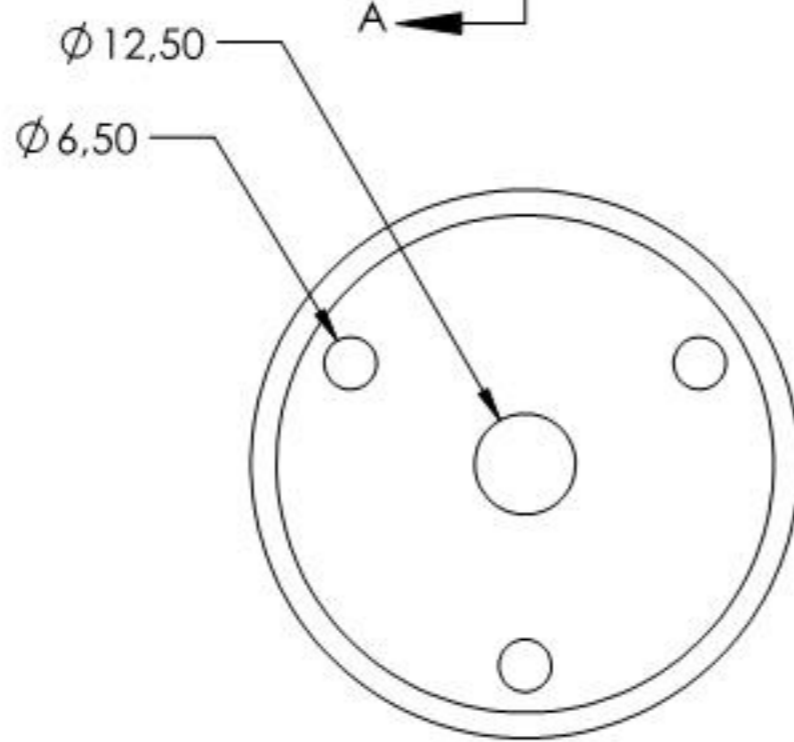
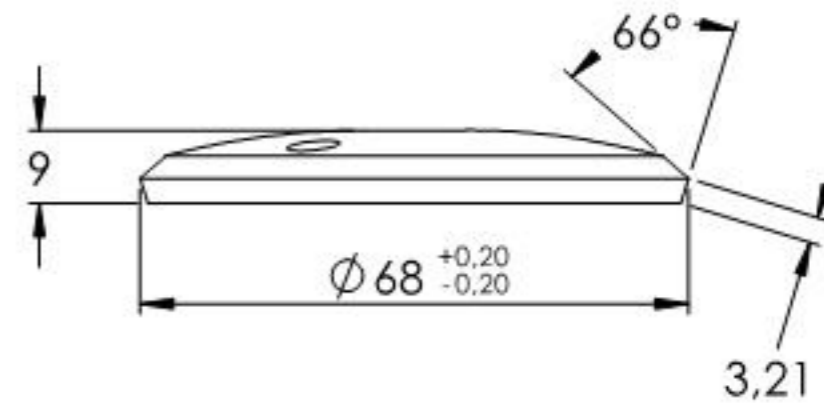
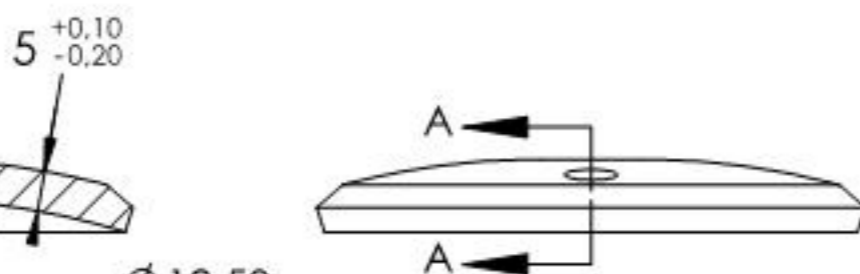
Name	Signatur	Datum	Artikelnummer	Oberfläche: Geschliffen Korn 240
Ch. Höfig	CH	16.09.2020	50201-240	
Werkstoff:		Hersteller		Blattformat
1.4301 (X5CrNi18-10)		 <small>EDLSTAHL-ALUMINIUM-SCHWEIßSTEIN</small>		A4
Gewicht 0.302 kg		Maßstab: 1:2	Version: 1	Blatt 1 von 4



11.2016.4

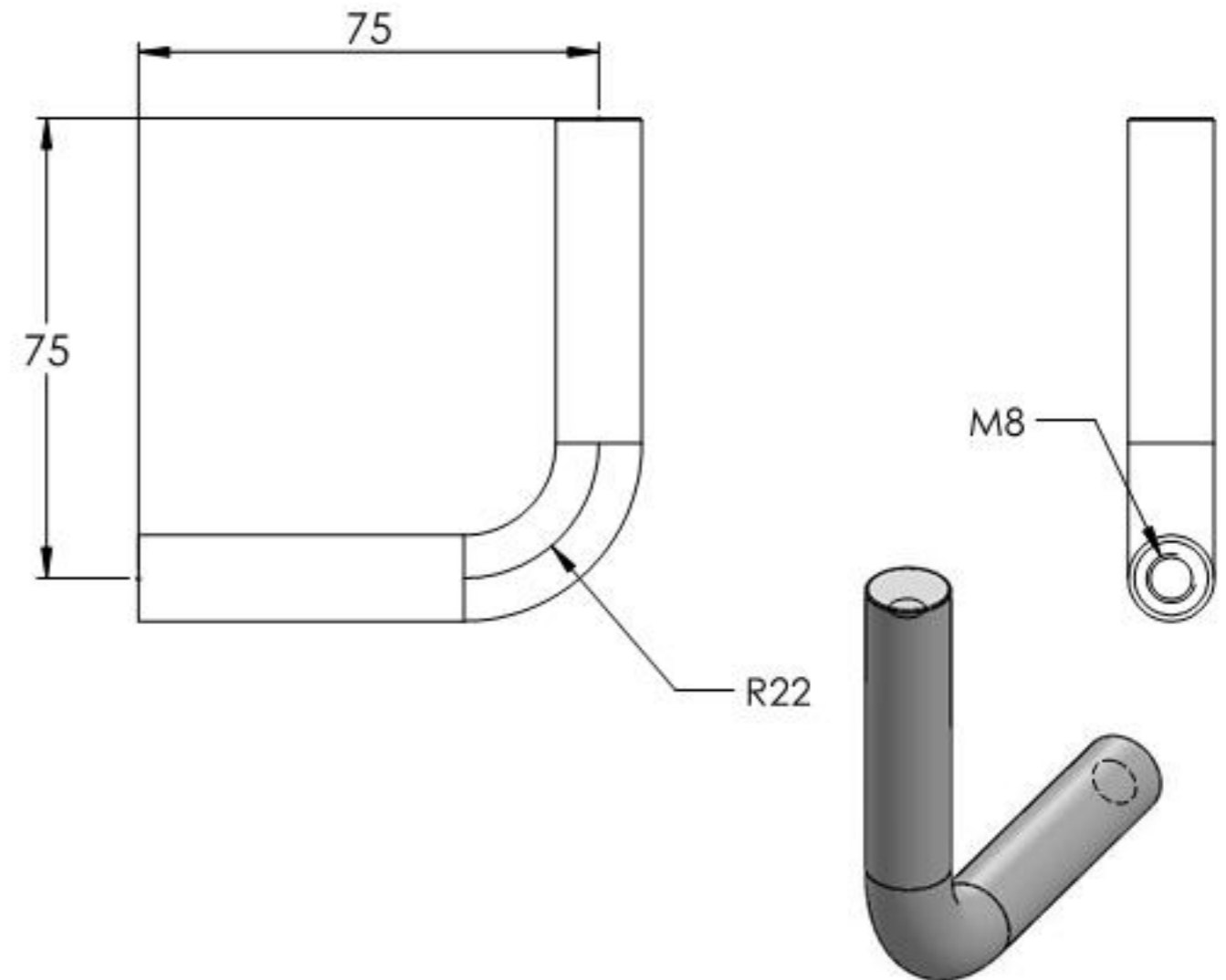
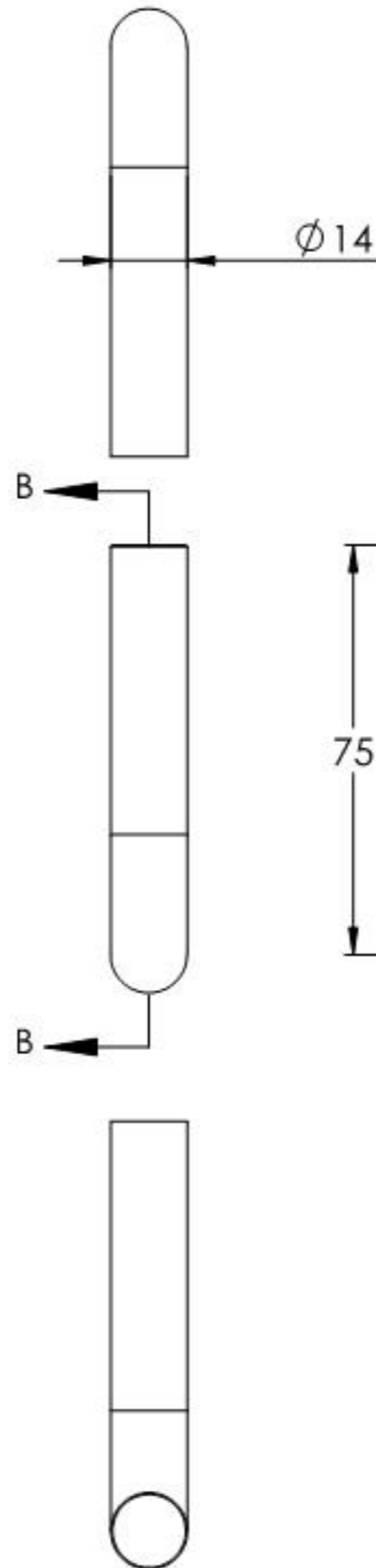
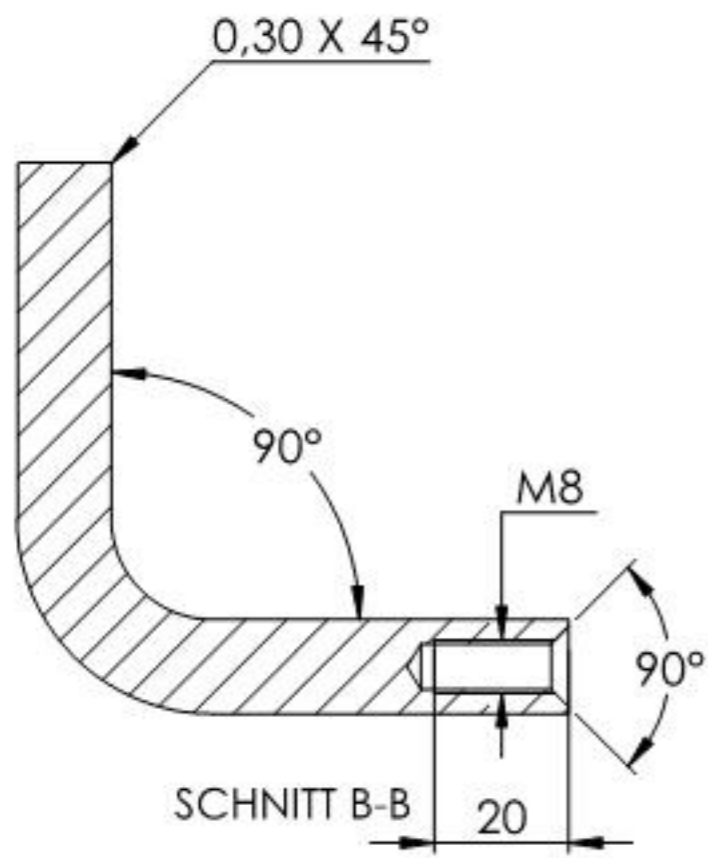


SCHNITT A-A



Name	Signatur	Datum	Artikelnummer	Oberfläche: Geschliffen Korn 240
Ch. Höfig	CH	16.09.2020	50201-240 Teil1	
Werkstoff: 1.4301 (X5CrNi18-10)			Hersteller	Blattformat
			 Feldmann EDLSTAHLE · ALUMINIUM · SCHWEIßEISEN	A4
Gewicht 0.130 kg			Maßstab: 1:1.25 Version: 1	Blatt 2 von 4

11.2016.4



Name	Signatur	Datum	Artikelnummer	Oberfläche: Geschliffen Korn 240
Ch. Höfig	CH	16.09.2020	50201-240 Teil2	
Werkstoff: 1.4301 (X5CrNi18-10)	Hersteller		 EDLSTAHL-ALUMINIUM-SCHWEIßSTEIN	Blattformat A4
Gewicht 0.164 kg	Maßstab: 1:1.5	Version: 1	Blatt 3 von 4	