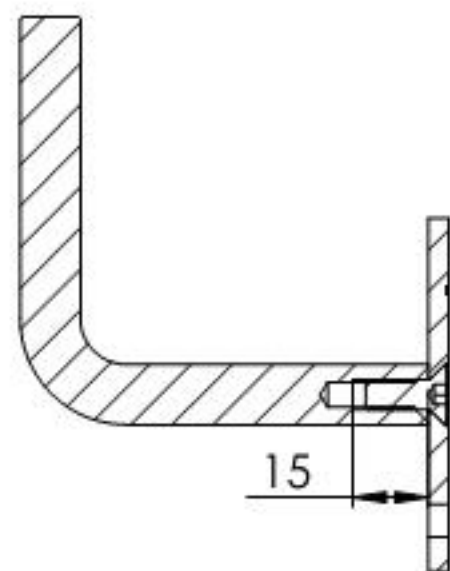
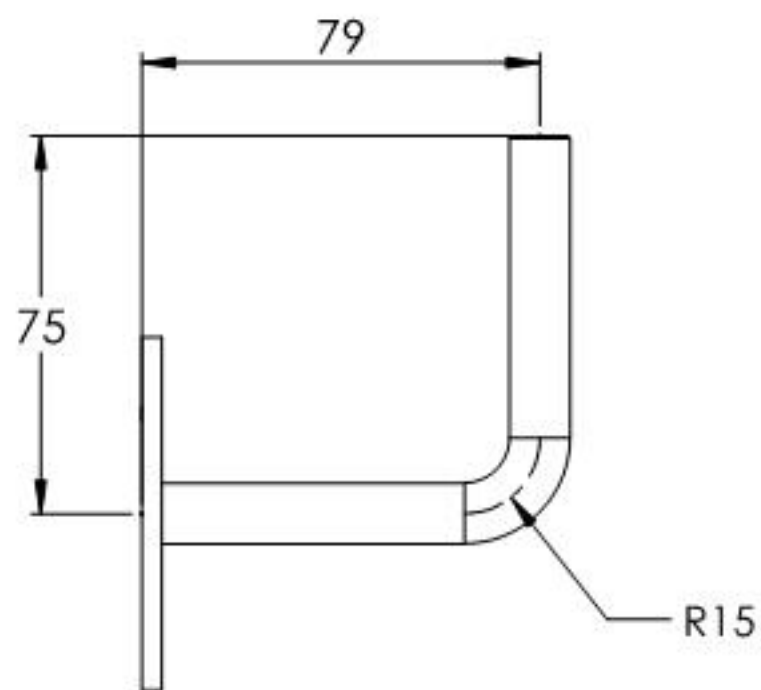
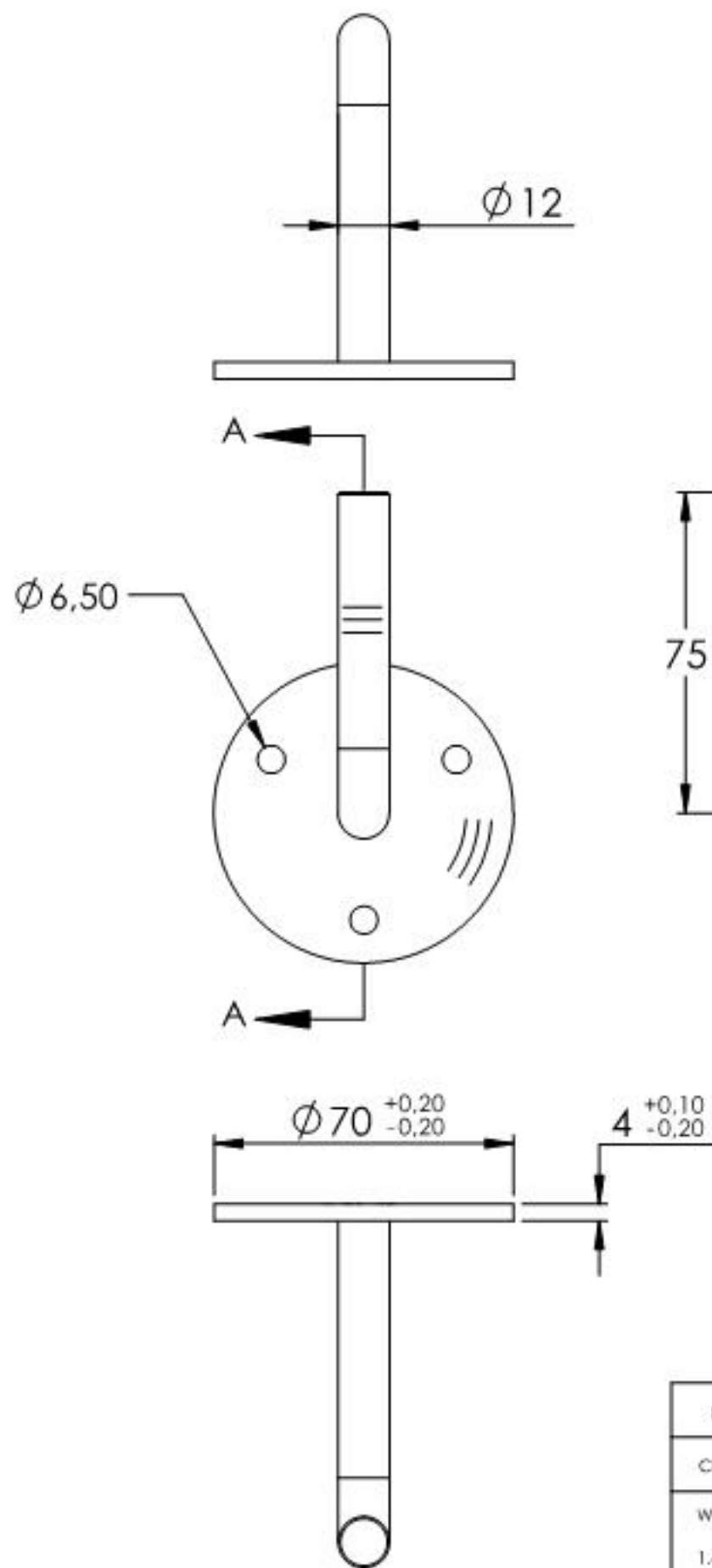


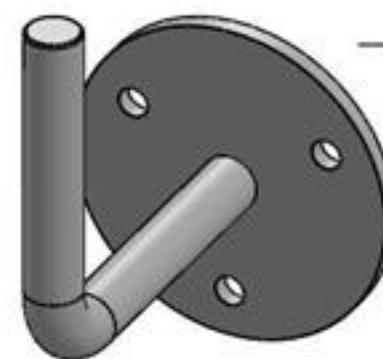
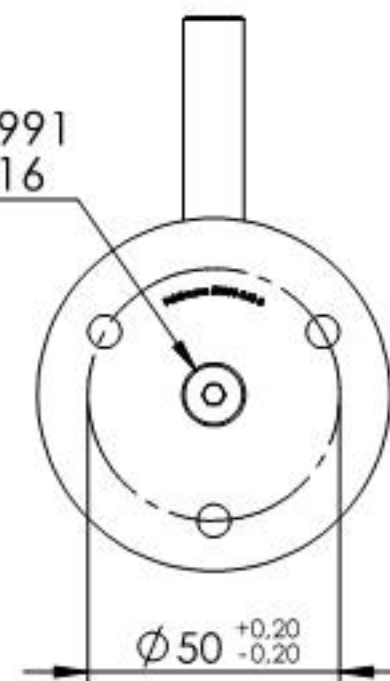
11.2011.4



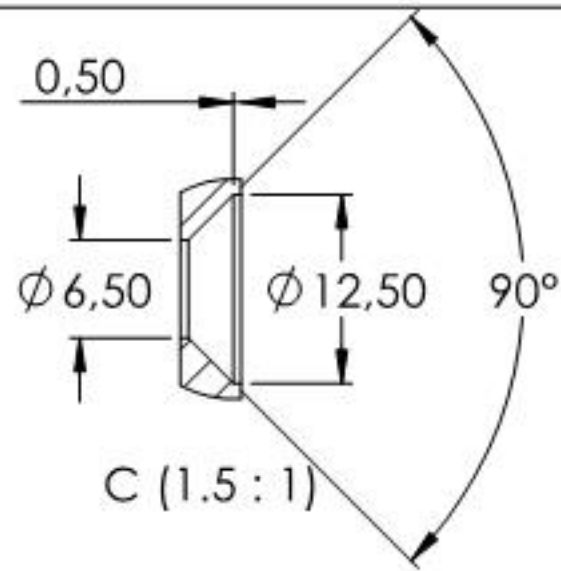
SCHNITT A-A



DIN 7991
M6x16



Name	Signatur	Datum	Artikelnummer	Oberfläche: Geschliffen Korn 240
Ch. Höfig	CH	08.09.2020	50300-240-3	
Werkstoff:		Hersteller		Blattformat
1.4301 (X5CrNi18-10)		 <small>EDLSTAHL-ALUMINIUM-SCHWEIßSTEIN</small>		A4
Gewicht 0.241 kg		Maßstab: 1:2	Version: 1	Blatt 1 von 4



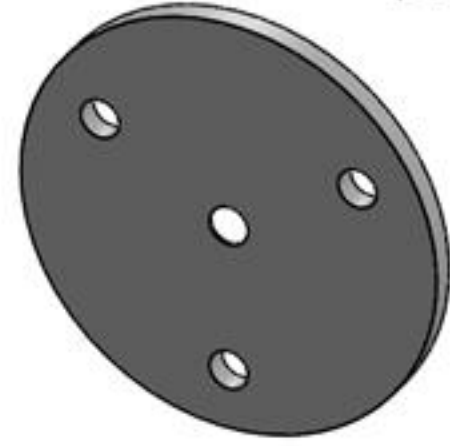
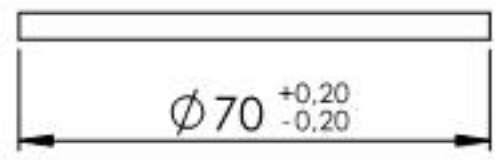
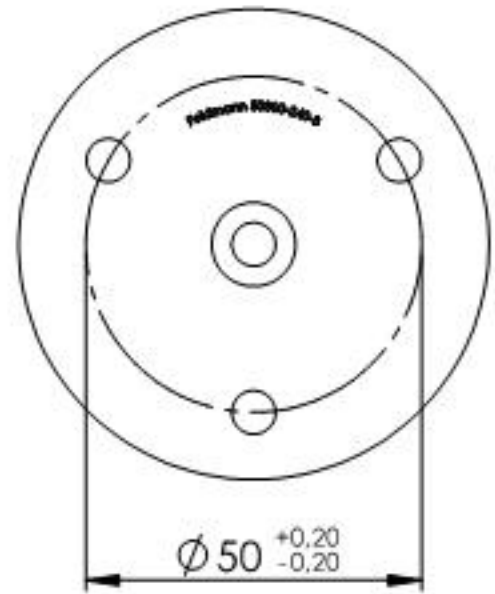
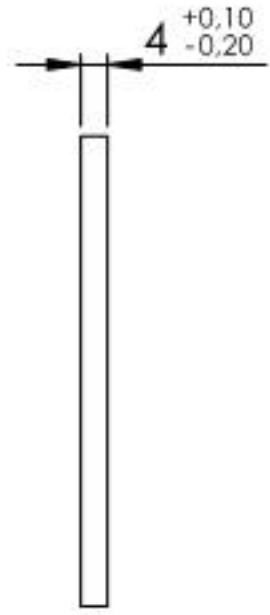
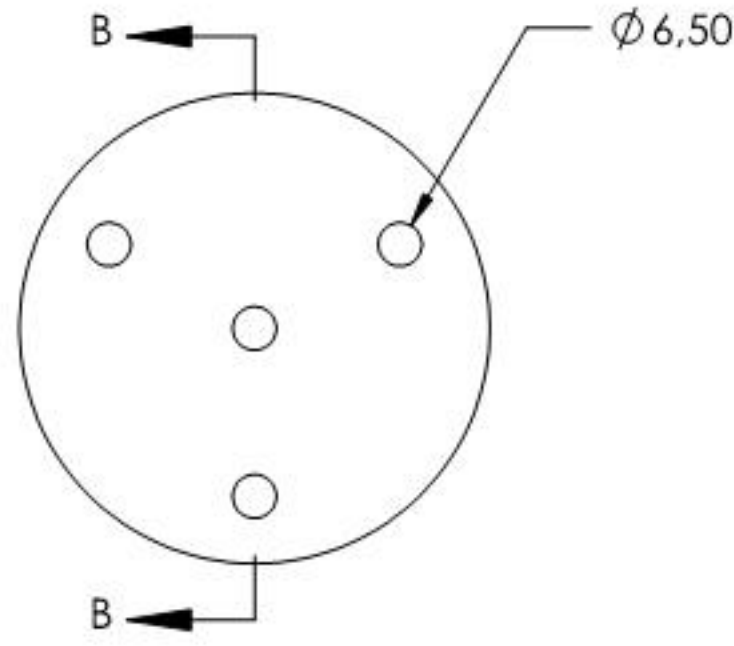
C (1.5 : 1)



SCHNITT B-B

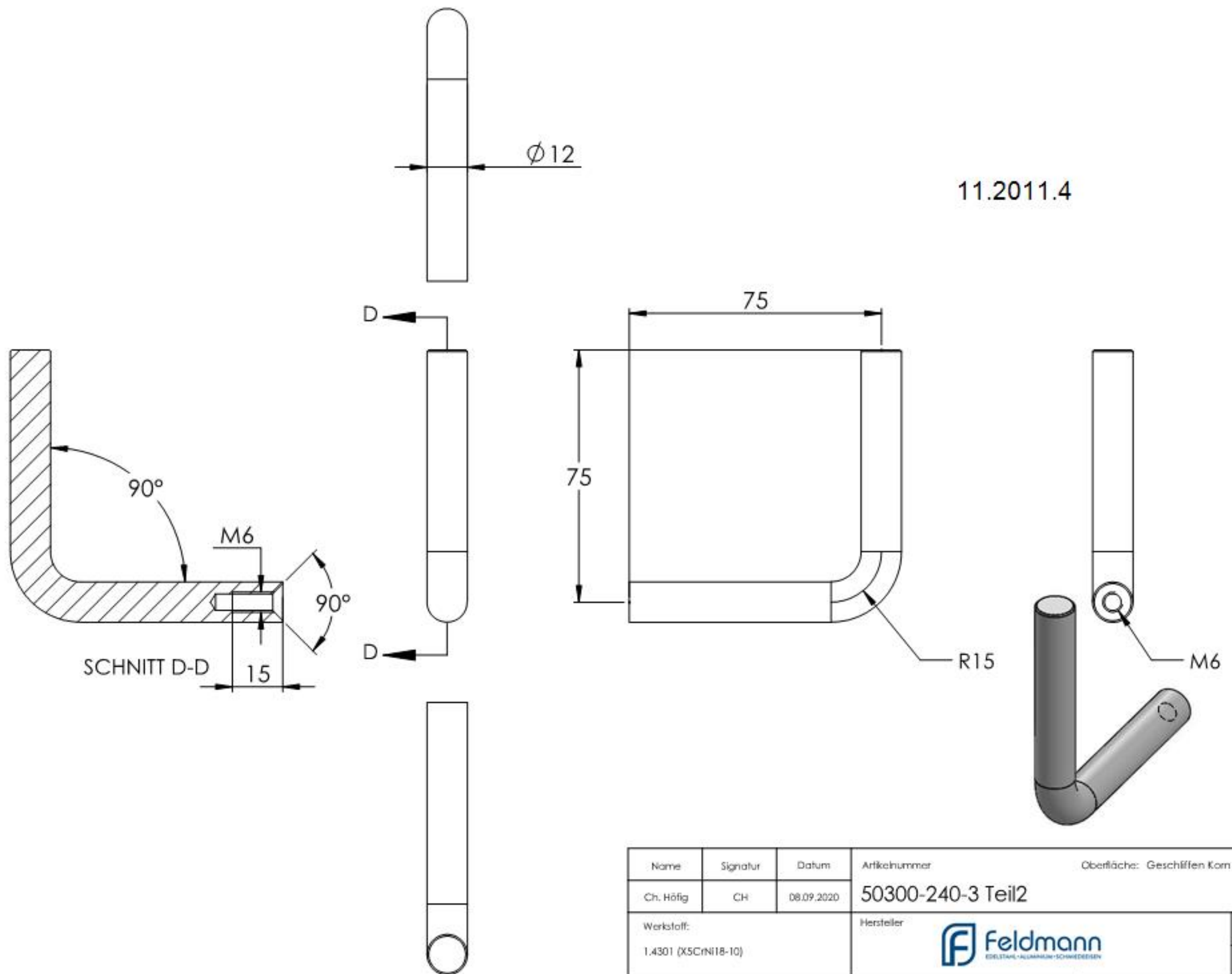


11.2011.4



Name	Signatur	Datum	Artikelnummer	Oberfläche: Geschliffen Korn 240
Ch. Höfig	CH	08.09.2020	50300-240-3 Teil1	
Werkstoff: 1.4301 (X5CrNi18-10)			Hersteller	Blattformat
			 Feldmann EDLSTAHLE-ALUMINIUM-SCHWEIßSTEIN	A4
Gewicht 0,116 kg			Maßstab: 1:1,5 Version: 1	Blatt 2 von 4

11.2011.4



Name	Signatur	Datum	Artikelnummer	Oberfläche: Geschliffen Korn 240
Ch. Höfig	CH	08.09.2020	50300-240-3 Teil2	
Werkstoff:		Hersteller		Blattformat
1.4301 (X5CrNi18-10)		Feldmann EDLSTAHL-ALUMINIUM-SCHWEIßEREN		A4
Gewicht 0.124 kg		Maßstab: 1:1.5 Version: 1		Blatt 3 von 4