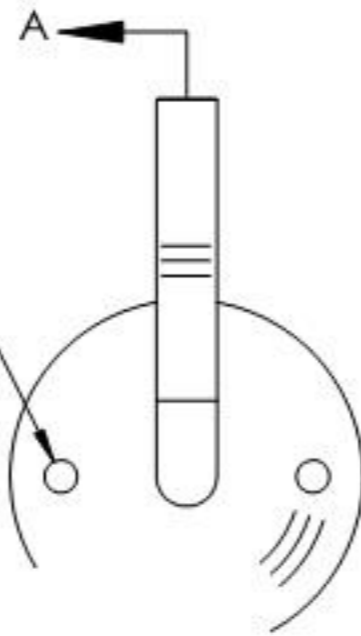
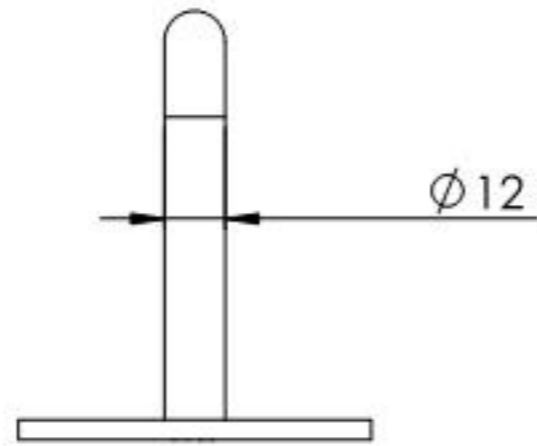


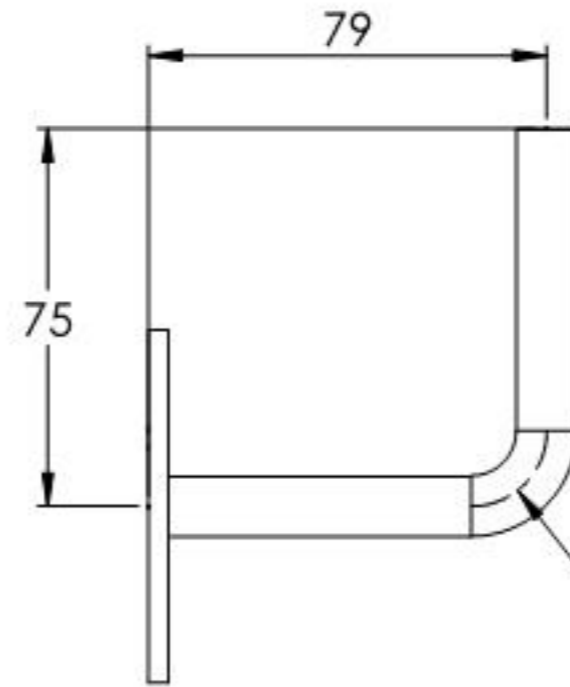
SCHNITT A-A

11.2010.4

$\phi 6,50$

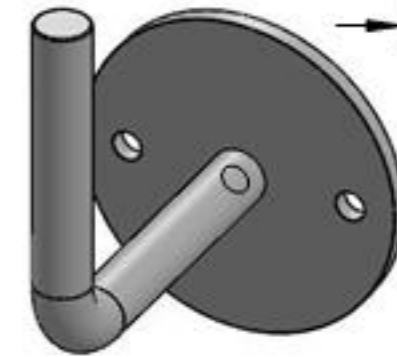
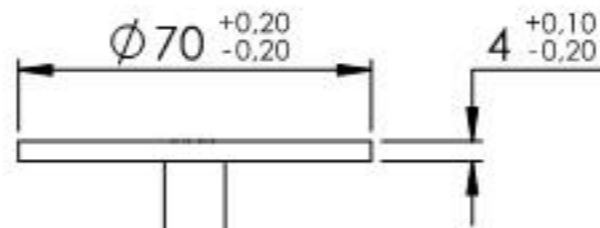
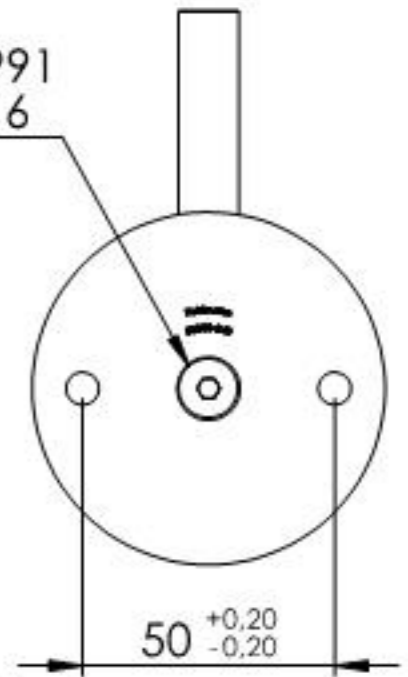


A ←

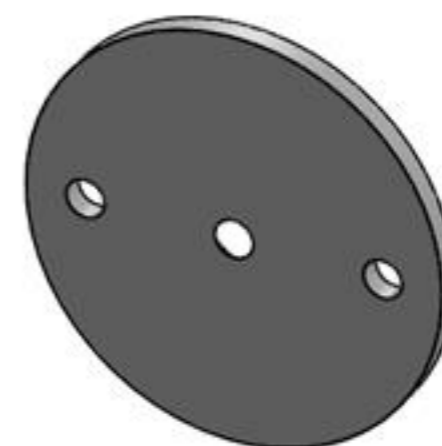
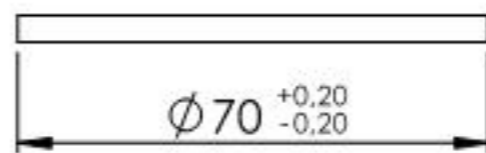
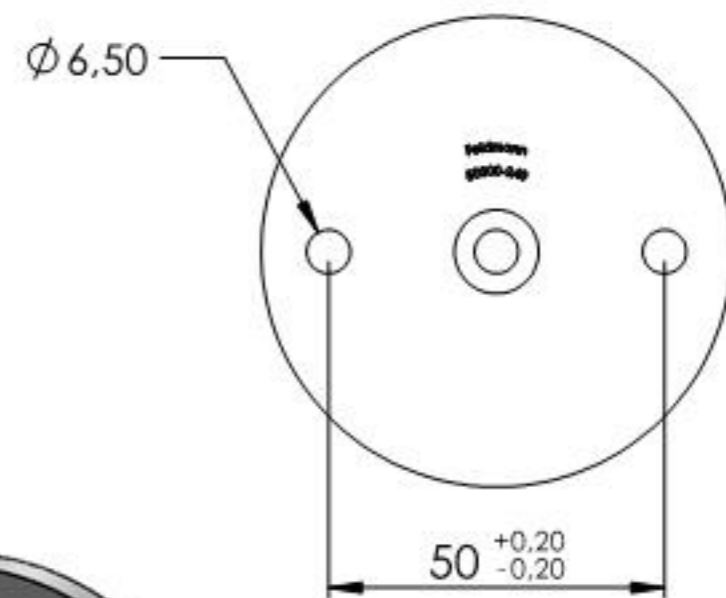
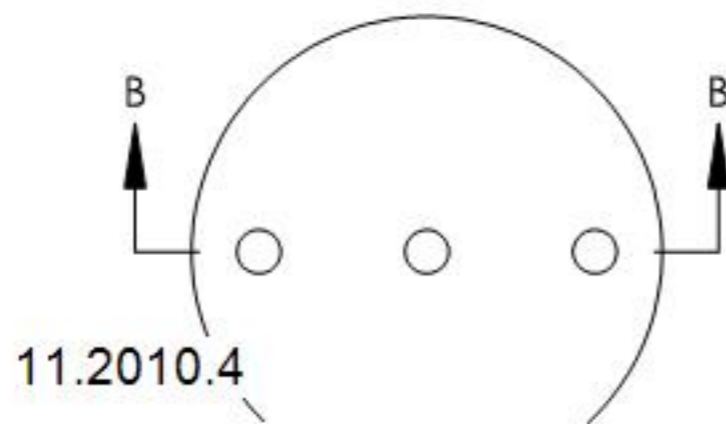
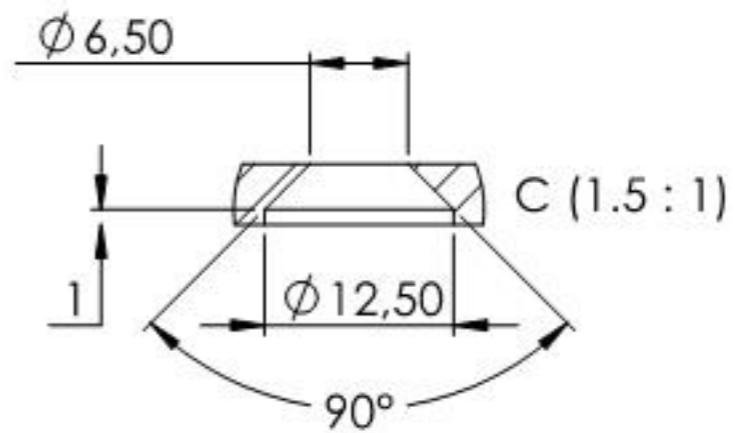
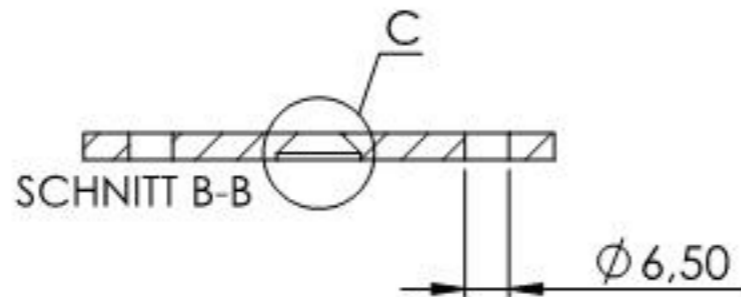


DIN 7991  
M6x16

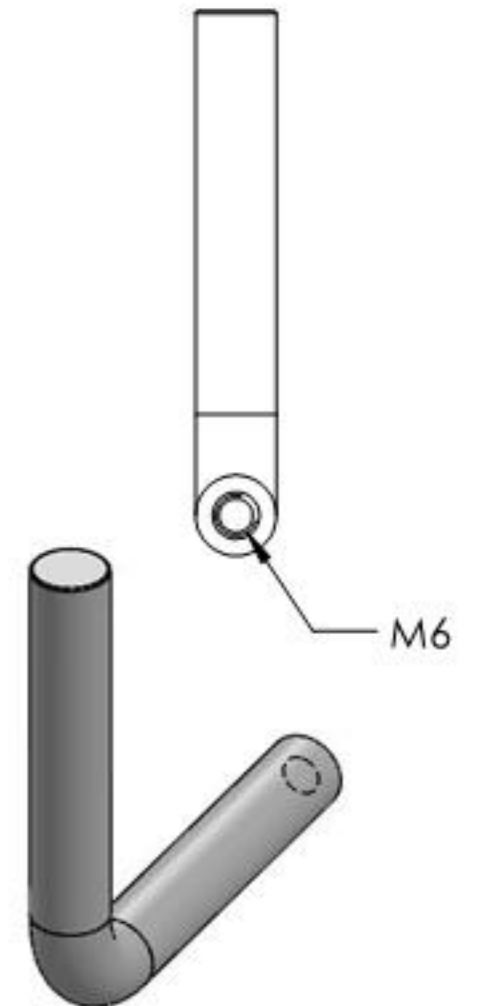
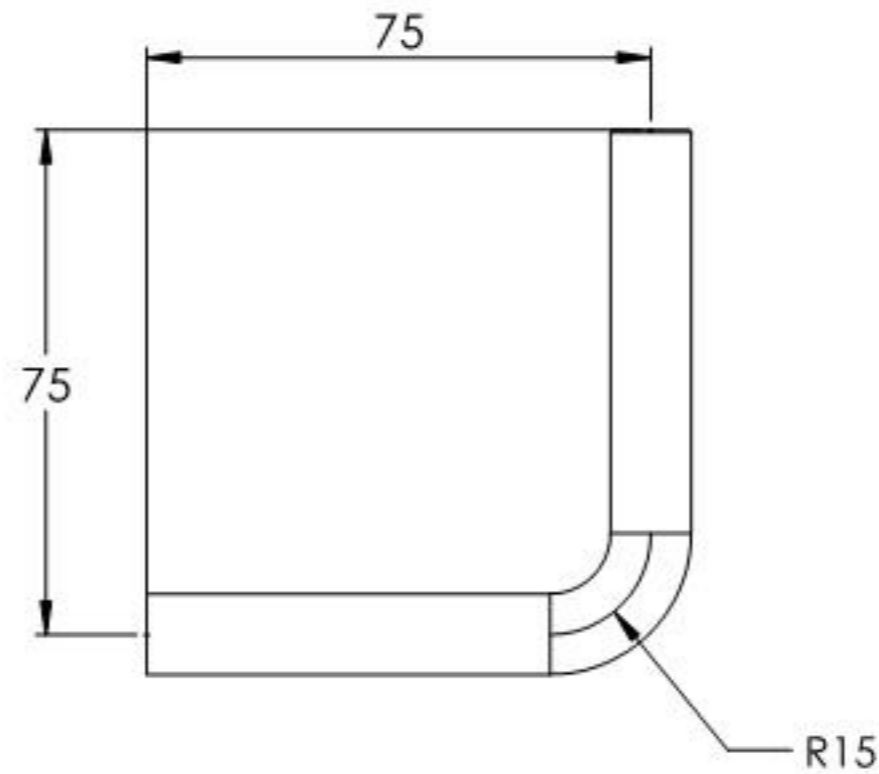
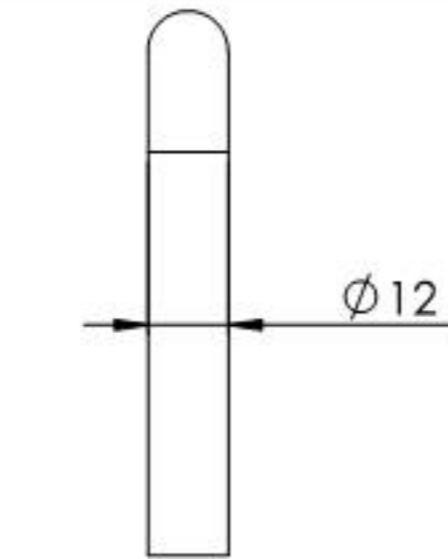
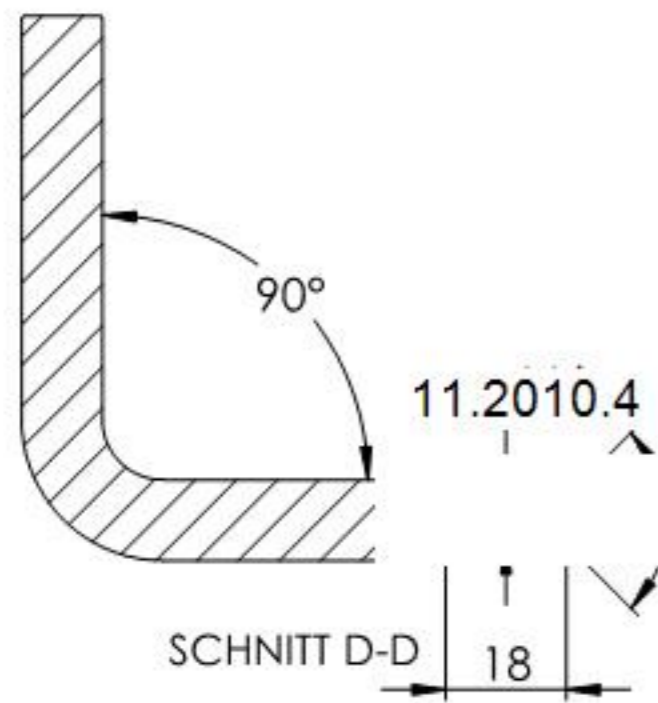
R15



Name	Signatur	Datum	Artikelnummer	Oberfläche: Geschliffen Korn 240
Ch. Höfig	CH	08.09.2020	50300-240	
Werkstoff:		Hersteller		Blattformat
1.4301 (X5CrNi18-10)		 <small>EDLSTAHL-ALUMINIUM-SCHWEIßSTEIN</small>		A4
Gewicht 0.242 kg		Maßstab: 1:2	Version: 1	Blatt 1 von 4



Name	Signatur	Datum	Artikelnummer	Oberfläche: Geschliffen Korn 240
Ch. Höfig	CH	08.09.2020	50300-240 Teil1	
Werkstoff:		Hersteller		Blattformat
1.4301 (X5CrNi18-10)		 <small>EDLSTAHLE · ALUMINIUM · SCHWEIßEISEN</small>		A4
Gewicht 0,117 kg		Maßstab: 1:1,5	Version: 1	Blatt 2 von 4



Name	Signatur	Datum	Artikelnummer	Oberfläche: Geschliffen Korn 240
Ch. Höfig	CH	08.09.2020	50300-240 Teil2	
Werkstoff:		Hersteller		Blattformat
1.4301 (X5CrNi18-10)		 <b>Feldmann</b> <small>EDLSTAHLE · ALUMINIUM · SCHWEIßESSEN</small>		A4
Gewicht 0.125 kg		Maßstab: 1:1.5	Version: 1	Blatt 3 von 4