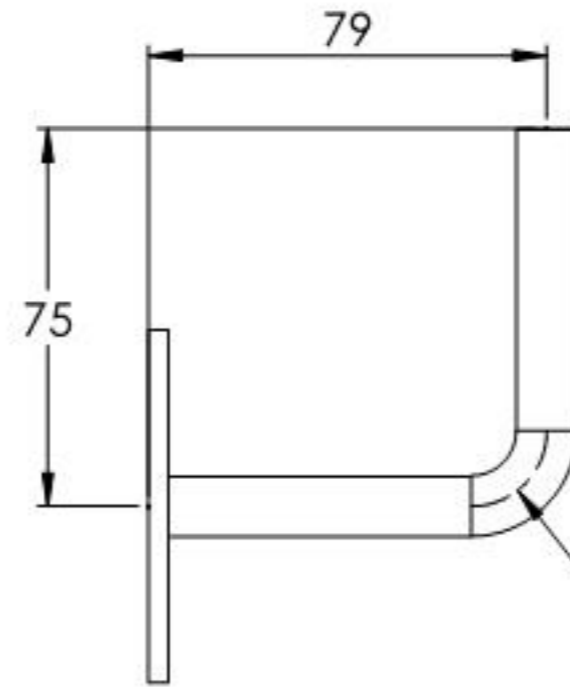
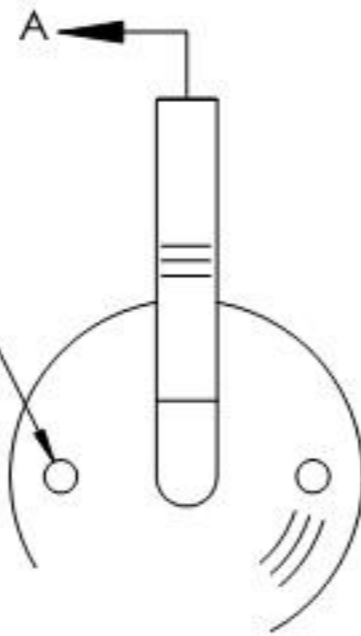
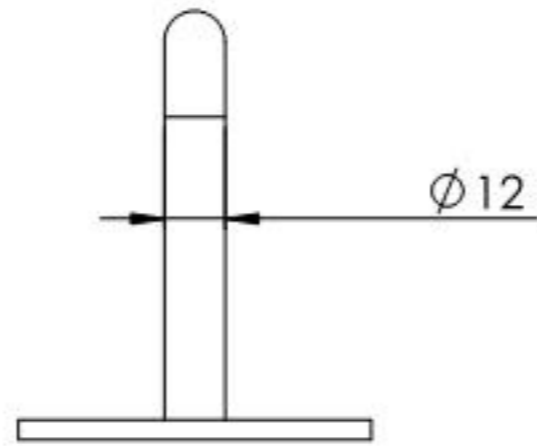


SCHNITT A-A

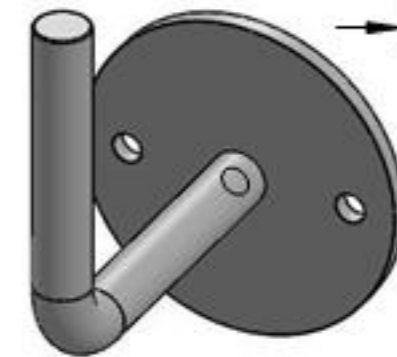
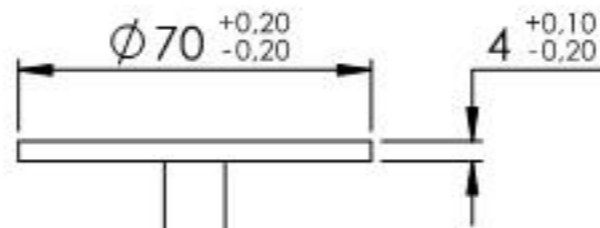
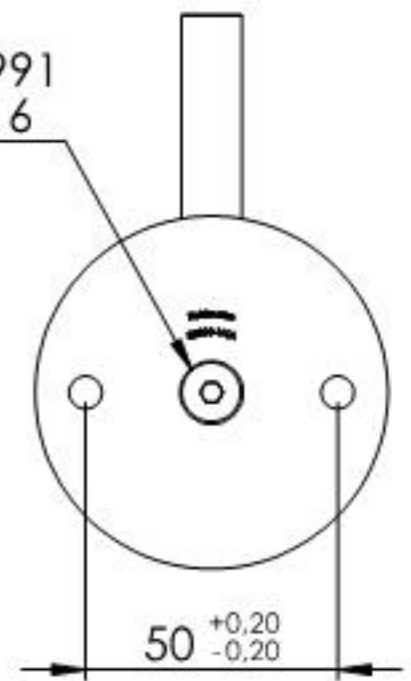
11.2010.1

$\phi 6,50$

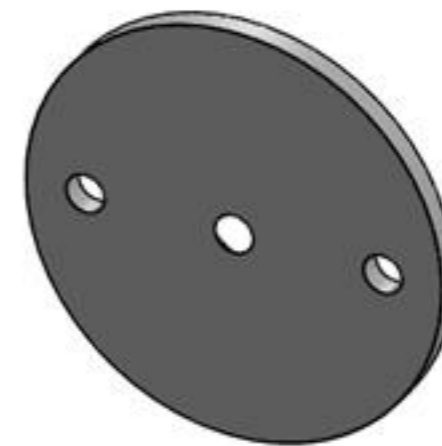
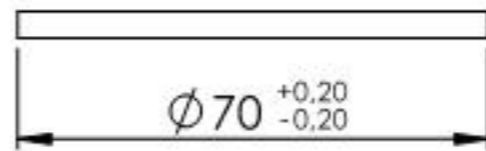
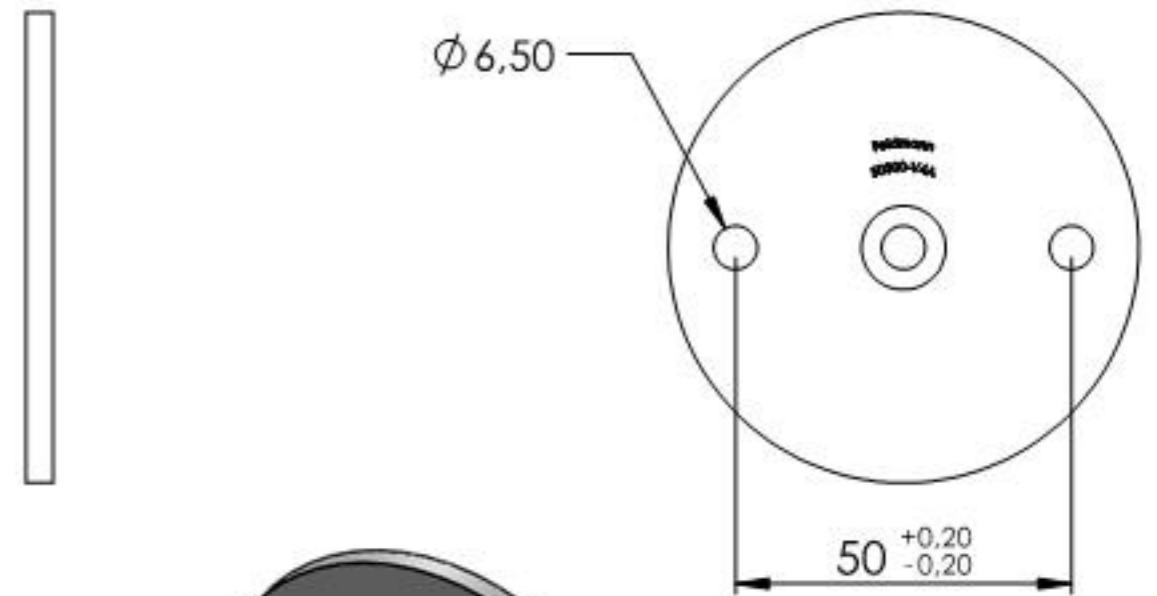
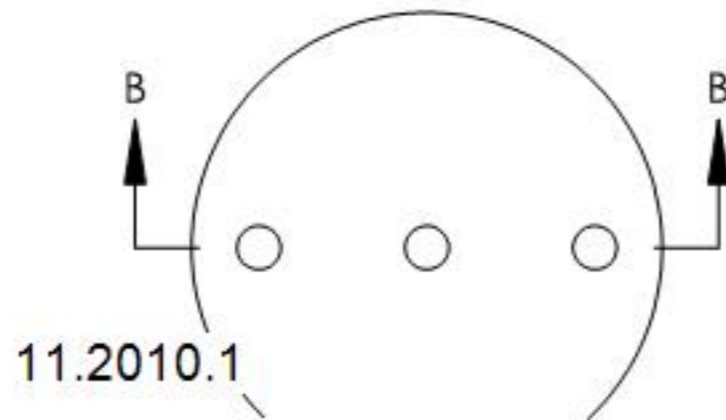
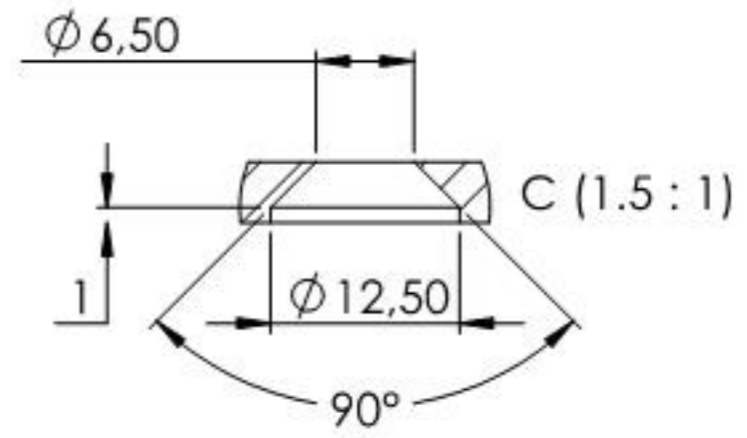
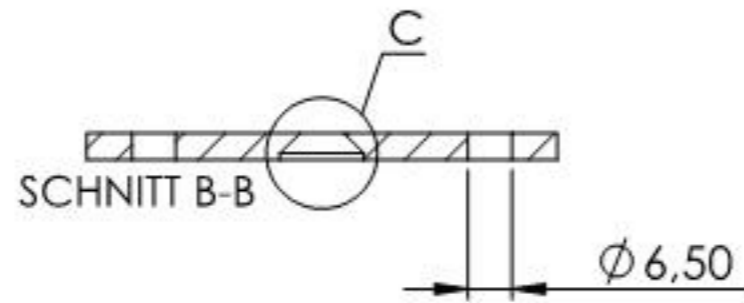


DIN 7991
M6x16

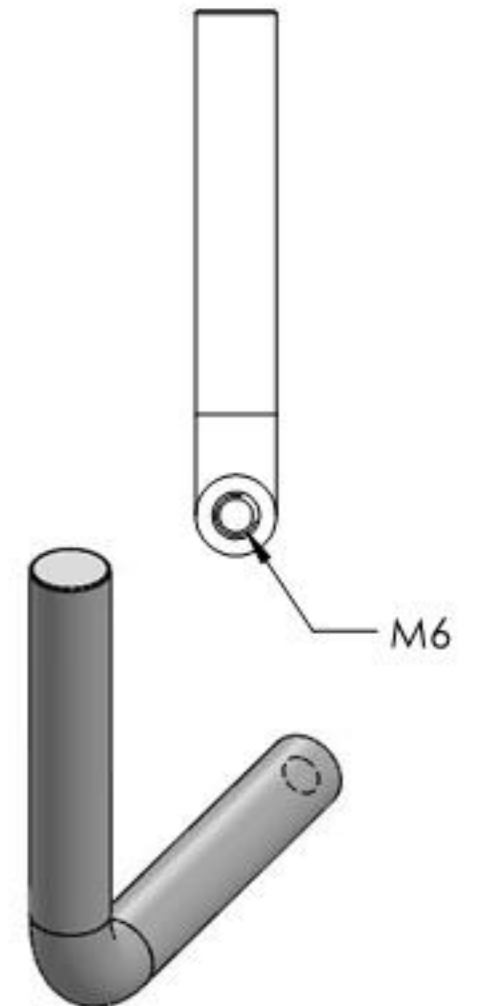
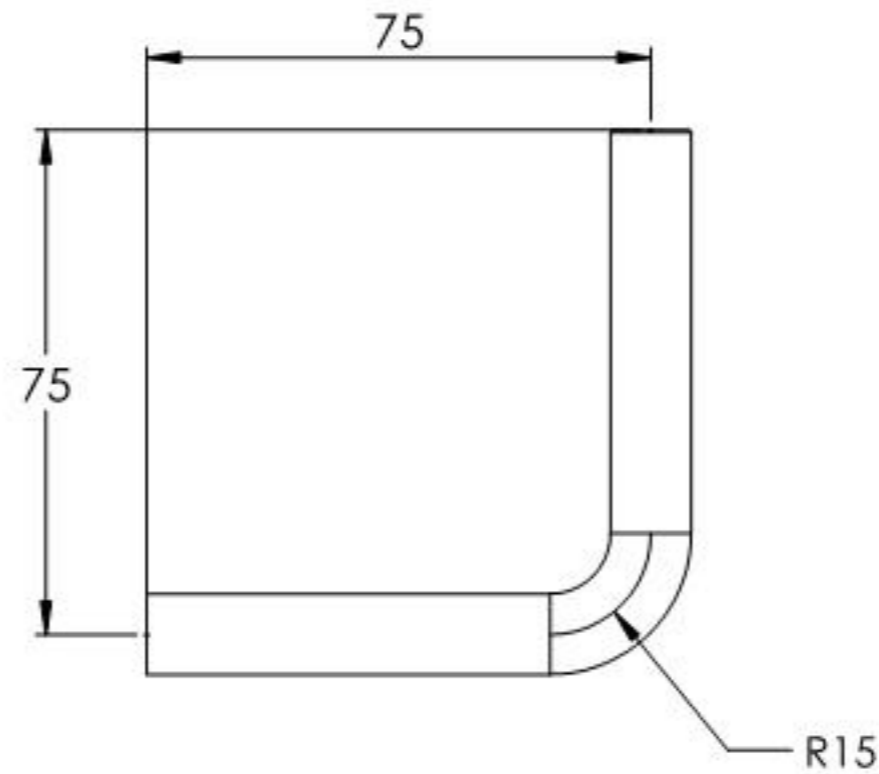
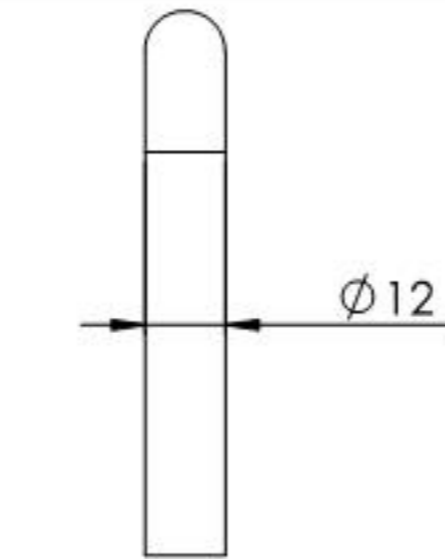
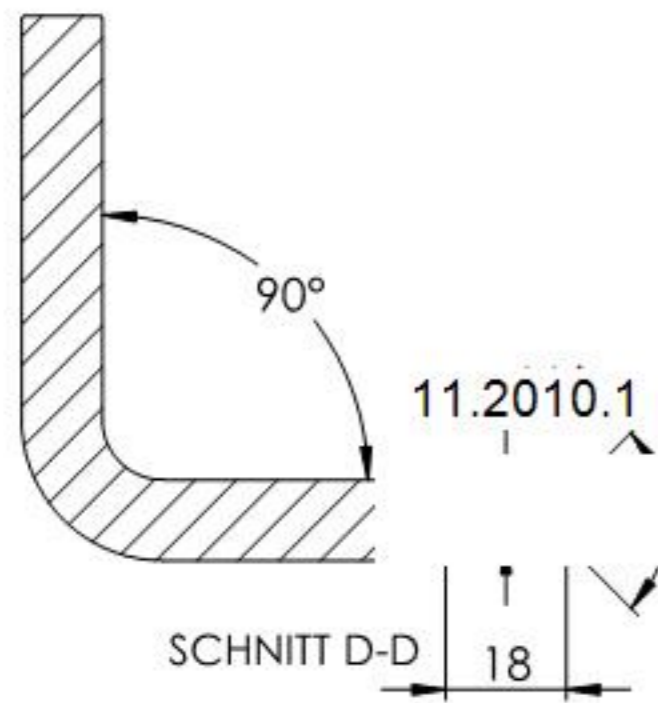
R15



Name	Signatur	Datum	Artikelnummer	Oberfläche: Geschliffen Korn 240
Ch. Höfig	CH	14.09.2020	50300-V4A	
Werkstoff: 1.4401/04 (X5CrNiMo17-12-2)			Hersteller	Blattformat
			 Feldmann EDLSTAHLE-ALUMINIUM-SCHWEIßEISEN	A4
Gewicht 0.245 kg		Maßstab: 1:2	Version: 1	Blatt 1 von 4



Name	Signatur	Datum	Artikelnummer	Oberfläche: Geschliffen Korn 240
Ch. Höfig	CH	14.09.2020	50300-V4A Teil1	
Werkstoff: 1.4401/04 (X5CrNiMo17-12-2)			Hersteller	Blattformat
			 Feldmann EDLSTAHL-ALUMINIUM-SCHWEIßSTEIN	A4
Gewicht 0,118 kg			Maßstab: 1:1,5 Version: 1	Blatt 2 von 4



Name	Signatur	Datum	Artikelnummer	Oberfläche: Geschliffen Korn 240
Ch. Höfig	CH	14.09.2020	50300-V4A Teil2	
Werkstoff:		Hersteller		Blattformat
1.4401/04 (X5CrNiMo17-12-2)		 <small>EDLSTAHLE · ALUMINIUM · SCHWEIßEISEN</small>		A4
Gewicht 0.127 kg		Maßstab: 1:1.5	Version: 1	Blatt 3 von 4