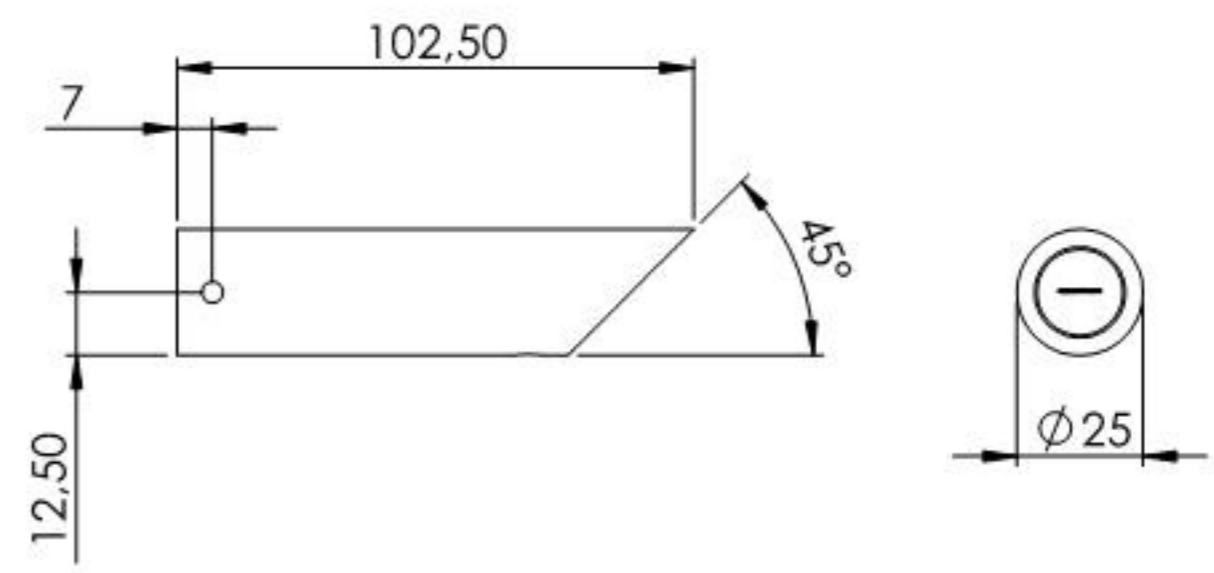
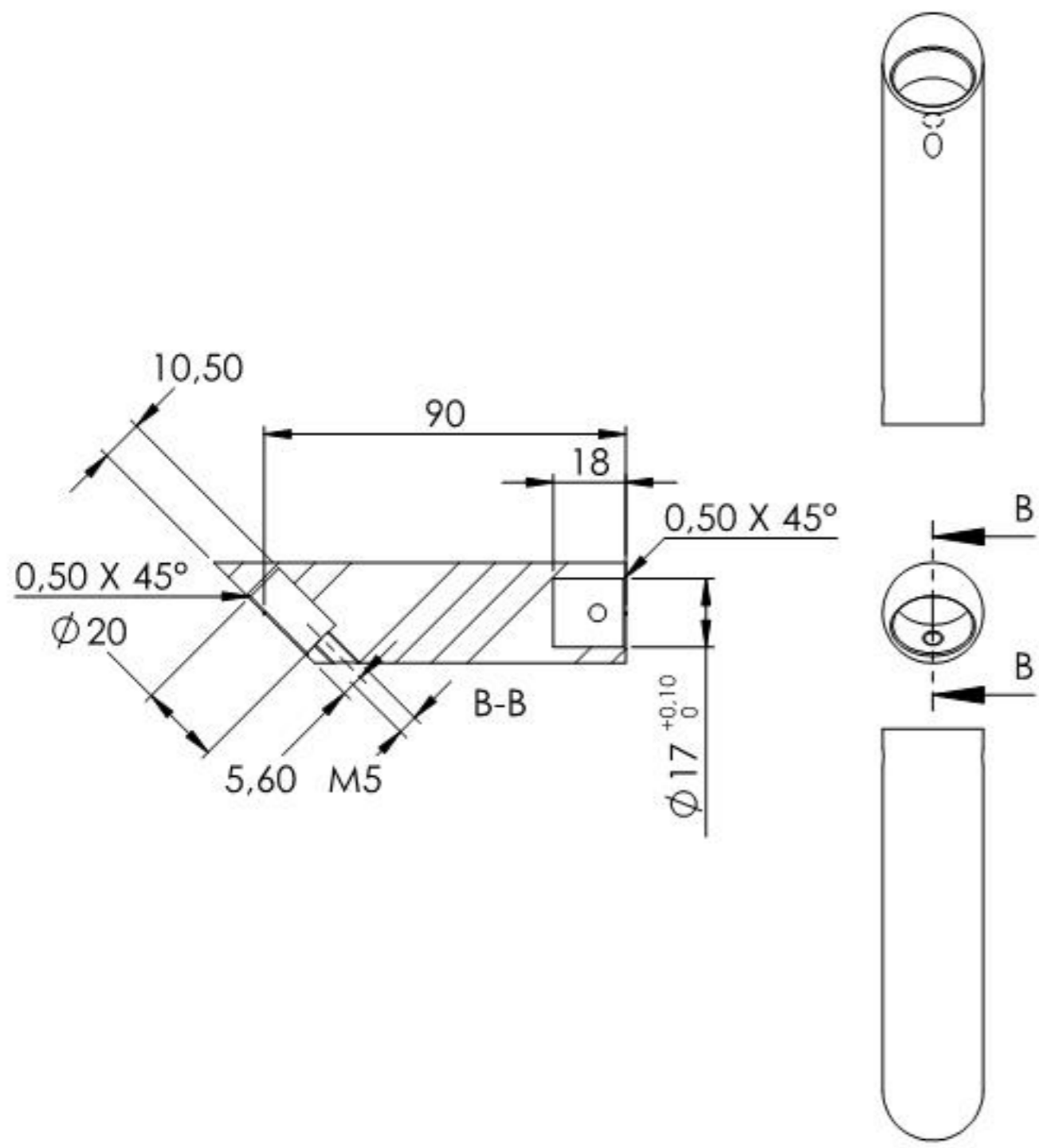
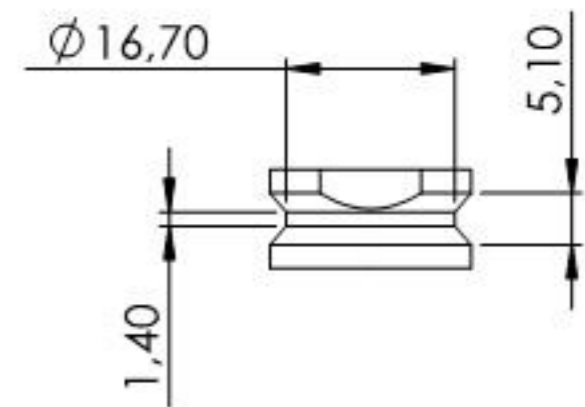
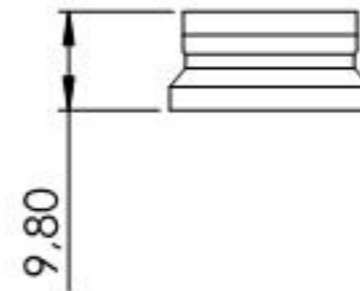
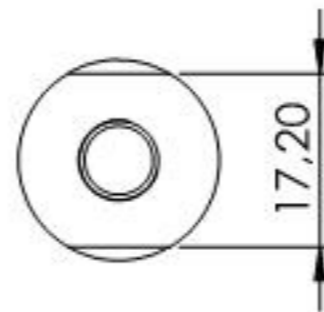
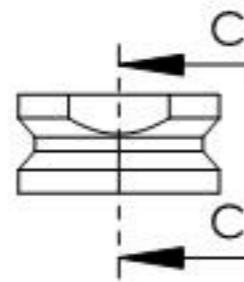
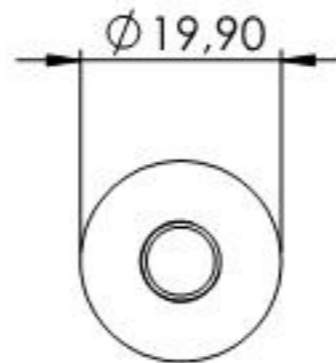
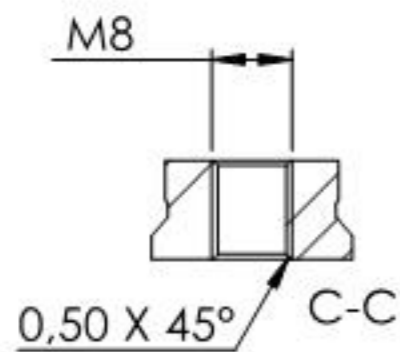


Name	Signatur	Datum	Artikelnummer	Oberfläche: Geschliffen Korn 240
Ch. Höfig	CH	16.05.2018	11.1007.4-33	
Werkstoff:				Blattformat
1.4301 (X5CrNi18-10)				A4
Gewicht 0,341 kg		Maßstab: 1:2	Version: 1	Blatt 1 von 5



Name	Signatur	Datum	Artikelnummer	Oberfläche: Geschliffen Korn 240
Ch. Höfig	CH	16.05.2018	11.1007.4-33 Teil 1	
Werkstoff:				Blattformat
1.4301 (X5CrNi18-10)				A4
Gewicht 0.289 kg		Maßstab: 1:2	Version: 1	Blatt 2 von 5



Name	Signatur	Datum	Artikelnummer	Oberfläche: Roh
Ch. Höfig	CH	16.05.2018	11.1007.4-XX Teil2	
Werkstoff:			Blattformat	
1.4301 (X5CrNi18-10)			A4	
Gewicht 0.018 kg		Maßstab: 1:1	Version: 1	Blatt 3 von 5