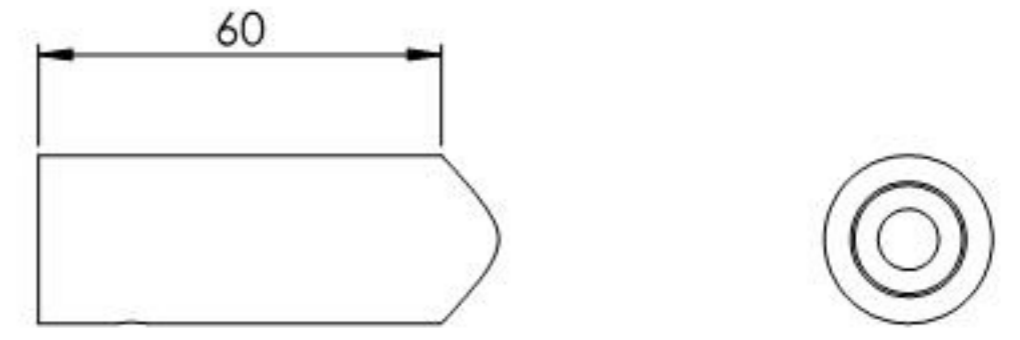
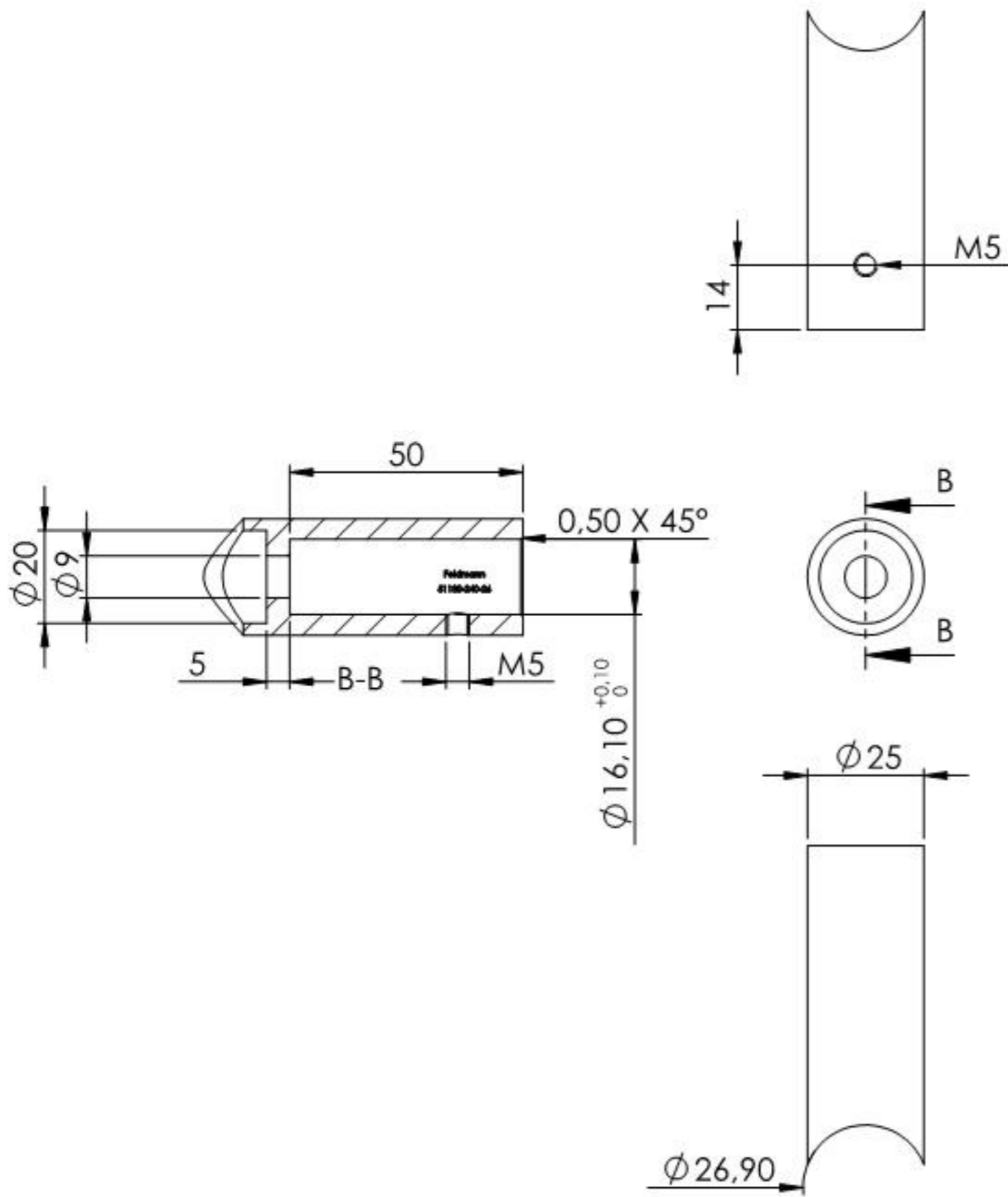
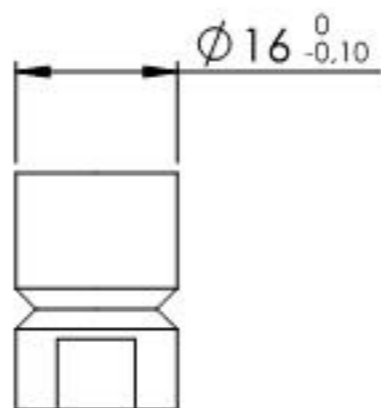
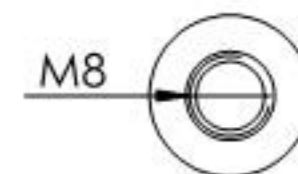
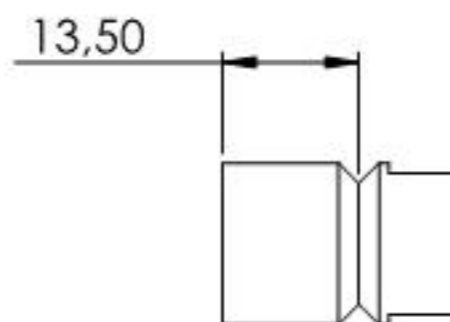
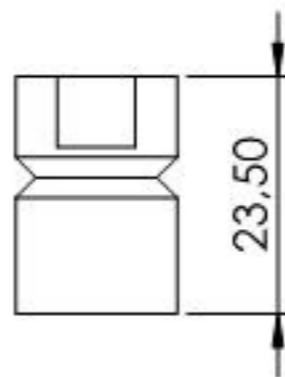
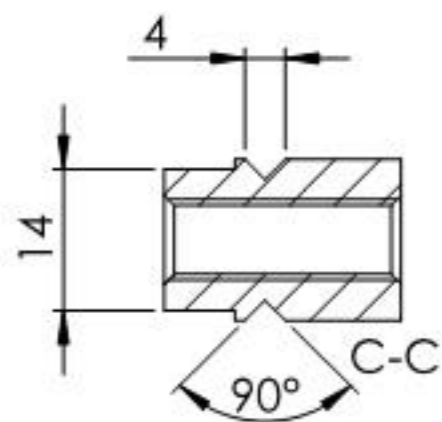


Name	Signatur	Datum	Artikelnummer	Oberfläche: Geschliffen Korn 240
Ch. Höfig	CH	05.06.2018	11.1001.4)-26	
Werkstoff:				Blattformat
1.4301 (X5CrNi18-10)				A4
Gewicht 0.170 kg		Massstab: 1:1.5	Version: 1	Blatt 1 von 4



Name	Signatur	Datum	Artikelnummer	Oberfläche: Geschliffen Korn 240
Ch. Höfig	CH	05.06.2018	11.1001.4)-26 Teil1	
Werkstoff:			Blattformat	
1.4301 (X5CrNi18-10)			A4	
Gewicht 0,141 kg		Maßstab: 1:1,5	Version: 1.1	Blatt 2 von 4



Name	Signatur	Datum	Artikelnummer	Oberfläche: Roh
Ch. Höfig	CH	05.06.2018	11.1001.4-xx Teil2	
Werkstoff: 1.4301 (X5CrNi18-10)			Blattformat A4	
Gewicht 0,028 kg		Massstab: 1:1	Version: 1	Blatt 3 von 4