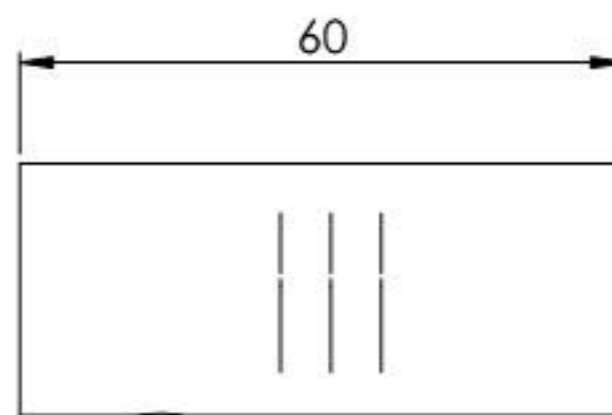
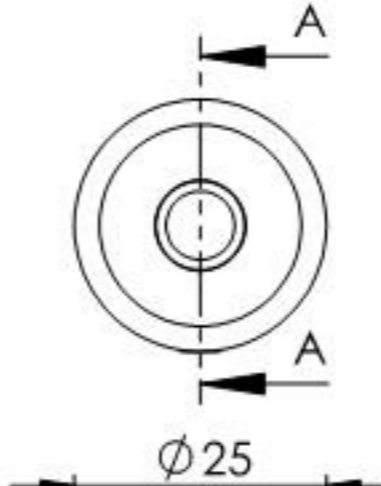
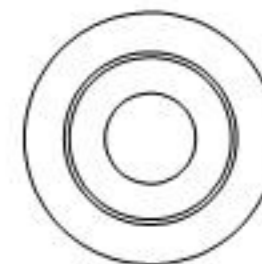
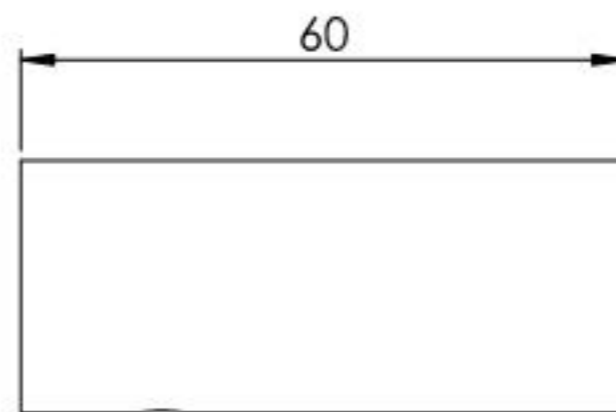
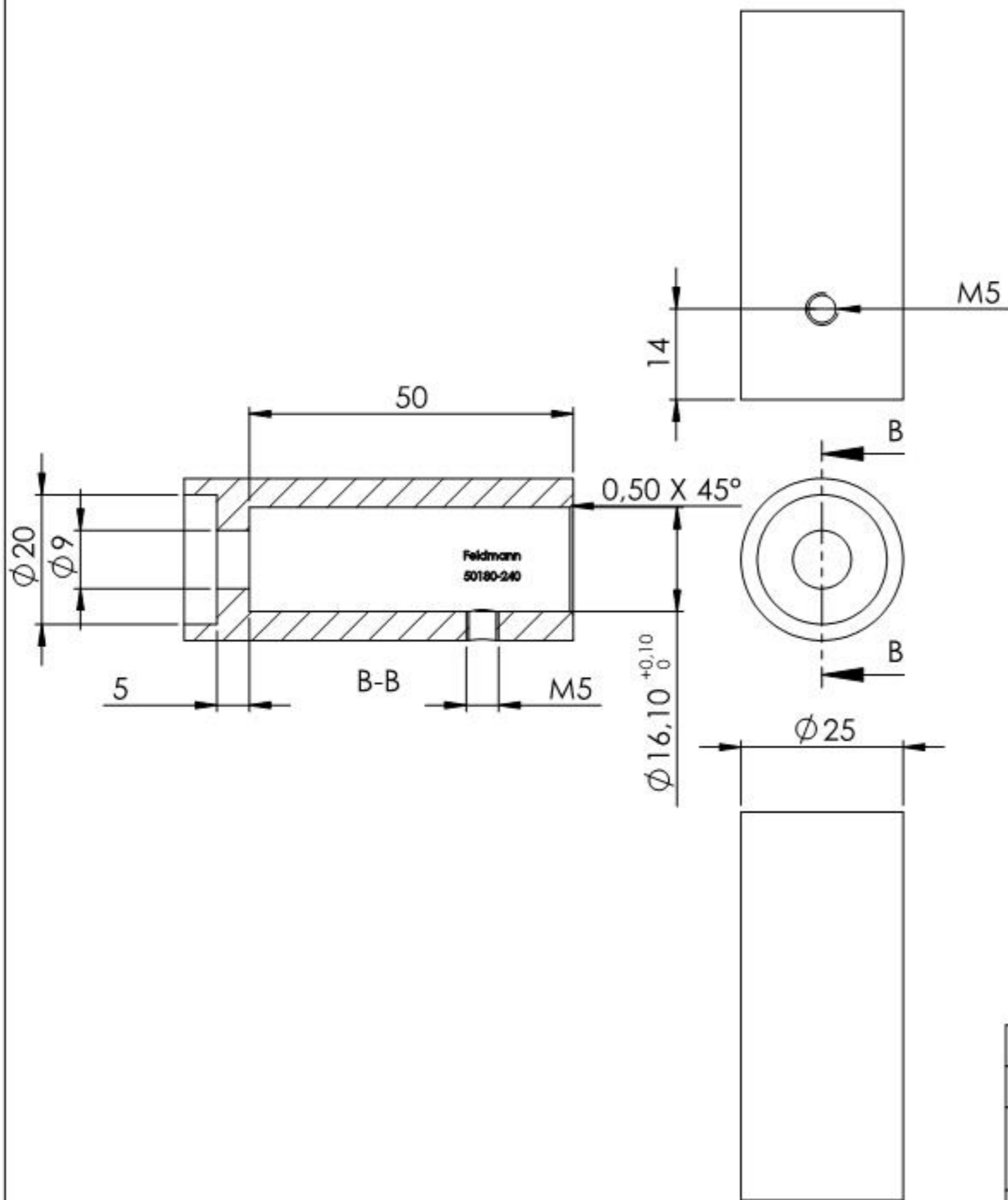


11.1000.4



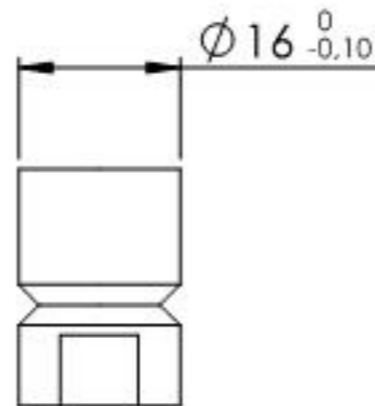
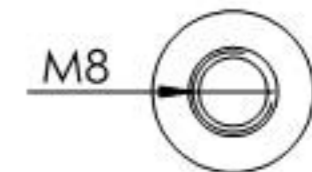
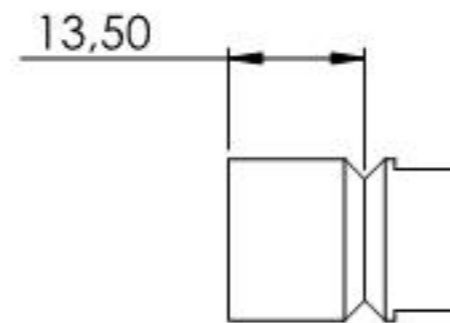
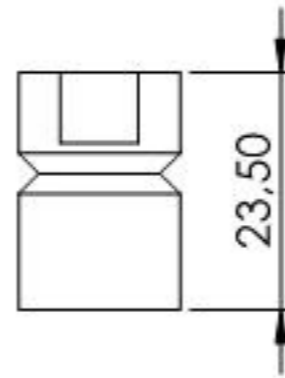
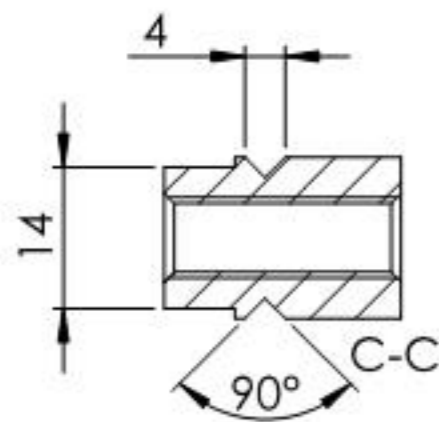
Name	Signatur	Datum	Artikelnummer	Oberfläche: Geschliffen Korn 240
Ch. Höfig	CH	05.06.2018	50180-240	
Werkstoff:		Hersteller		Blattformat
1.4301 (X5CrNi18-10)				A4
Gewicht 0.166 kg		Maßstab: 1:1	Version: 1	Blatt 1 von 4

11.1000.4



Name	Signatur	Datum	Artikelnummer	Oberfläche: Geschliffen Korn 240
Ch. Höfig	CH	05.06.2018	50180-240 Teil 1	
Werkstoff: 1.4301 (X5CrNi18-10)			Hersteller 	Blattformat A4
Gewicht 0.137 kg			Maßstab: 1:1	Version: 1.1
Blatt 2 von 4				

11.1000.4



Name	Signatur	Datum	Artikelnummer	Oberfläche: Roh
Ch. Höfig	CH	05.06.2018	5x180-240-xx Teil2	
Werkstoff: 1.4301 (X5CrNi18-10)		Hersteller 		Blattformat
Gewicht 0,028 kg		Maßstab: 1:1	Version: 1	A4
		Blatt 3 von 4		