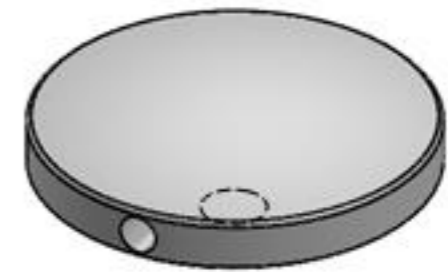
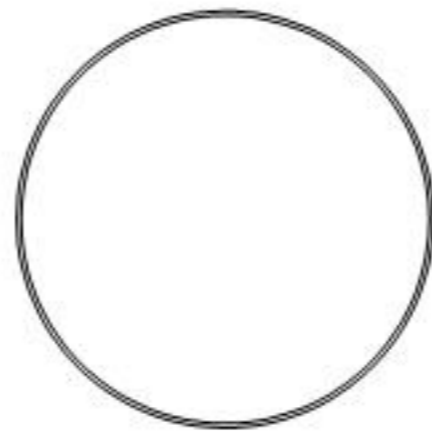
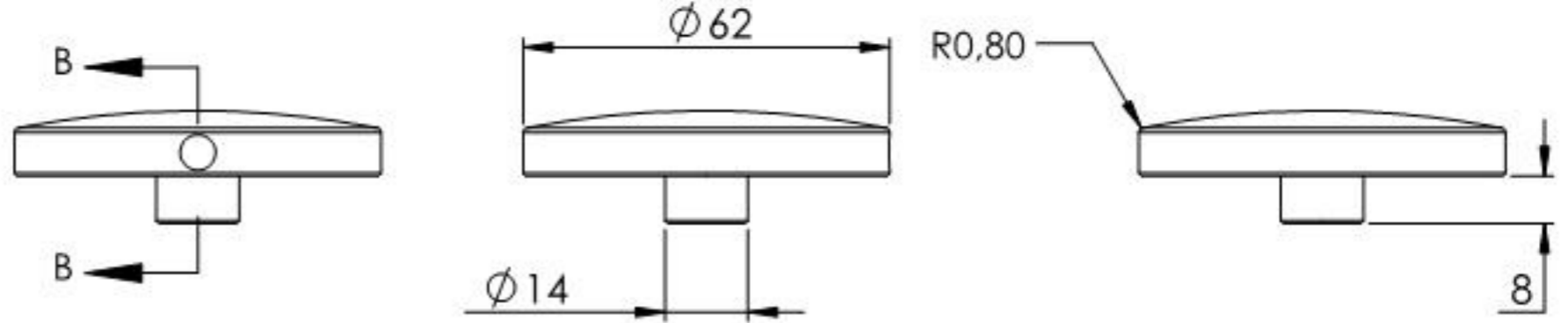
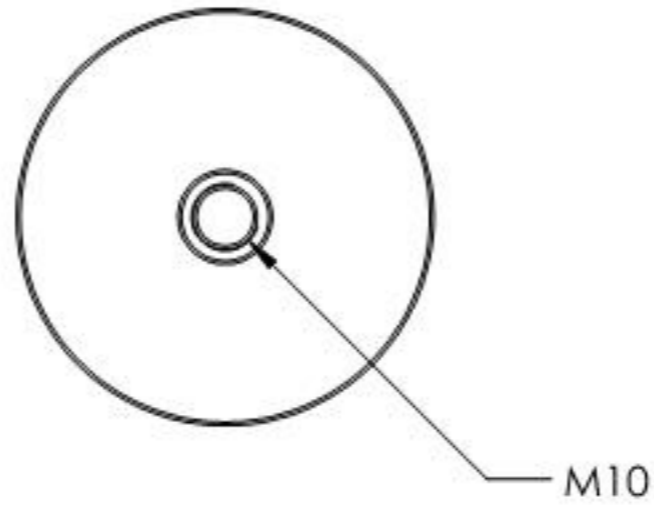
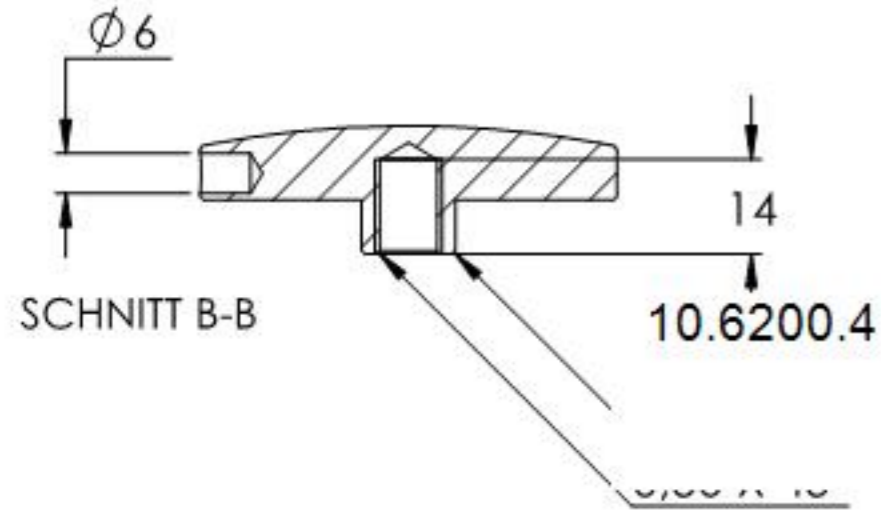
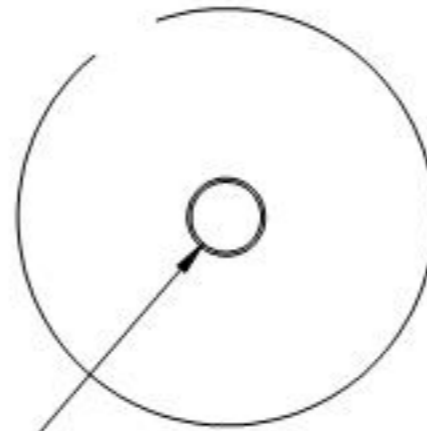
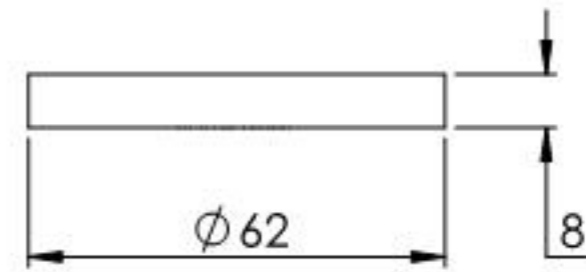
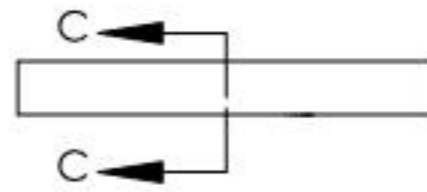
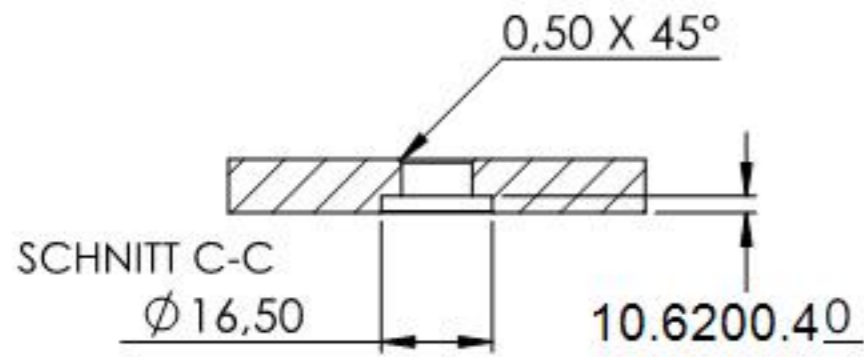


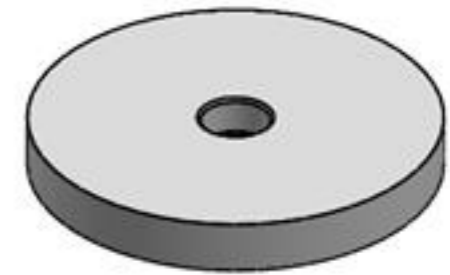
Name	Signatur	Datum	Artikelnummer	Oberfläche: Geschliffen Korn 240
Ch. Höfig	CH	27.10.2020	60240-240	
Werkstoff:		Hersteller		Blattformat
1.4301 (X5CrNi18-10)		 Feldmann <small>EDLSTAHLE · ALUMINIUM · SCHWEIßEISEN</small>		A4
Gewicht 0,457 kg		Maßstab: 1:2	Version: 1	Blatt 1 von 6



Name	Signatur	Datum	Artikelnummer	Oberfläche: Geschliffen Korn 240
Ch. Höfig	CH	27.10.2020	60240-240 Teil1	
Werkstoff: 1.4301 (X5CrNi18-10)		Hersteller  Feldmann EDLSTAHLE-ALUMINIUM-SCHWEIßEISEN		Blattformat A4
Gewicht 0.228 kg		Maßstab: 1:1,5	Version: 1	Blatt 2 von 6



$\varnothing 10,50$



Name	Signatur	Datum	Artikelnummer	Oberfläche: Geschliffen Korn 240
Ch. Höfig	CH	27.10.2020	60240-240 Teil2	
Werkstoff:		Hersteller		Blattformat
1.4301 (X5CrNi18-10)		 <small>EDLSTAHLE · ALUMINIUM · SCHWEIßEISEN</small>		A4
Gewicht 0.183 kg		Maßstab: 1:1.5	Version: 1	Blatt 3 von 6