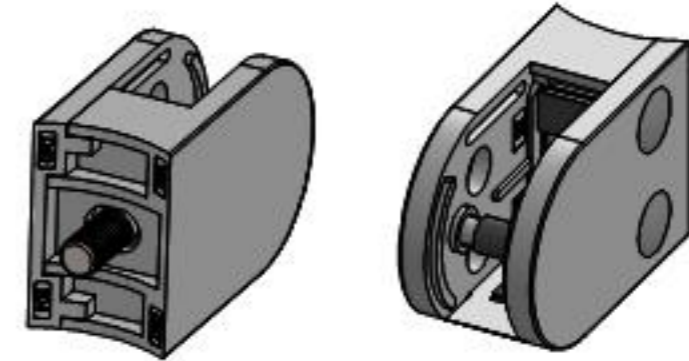
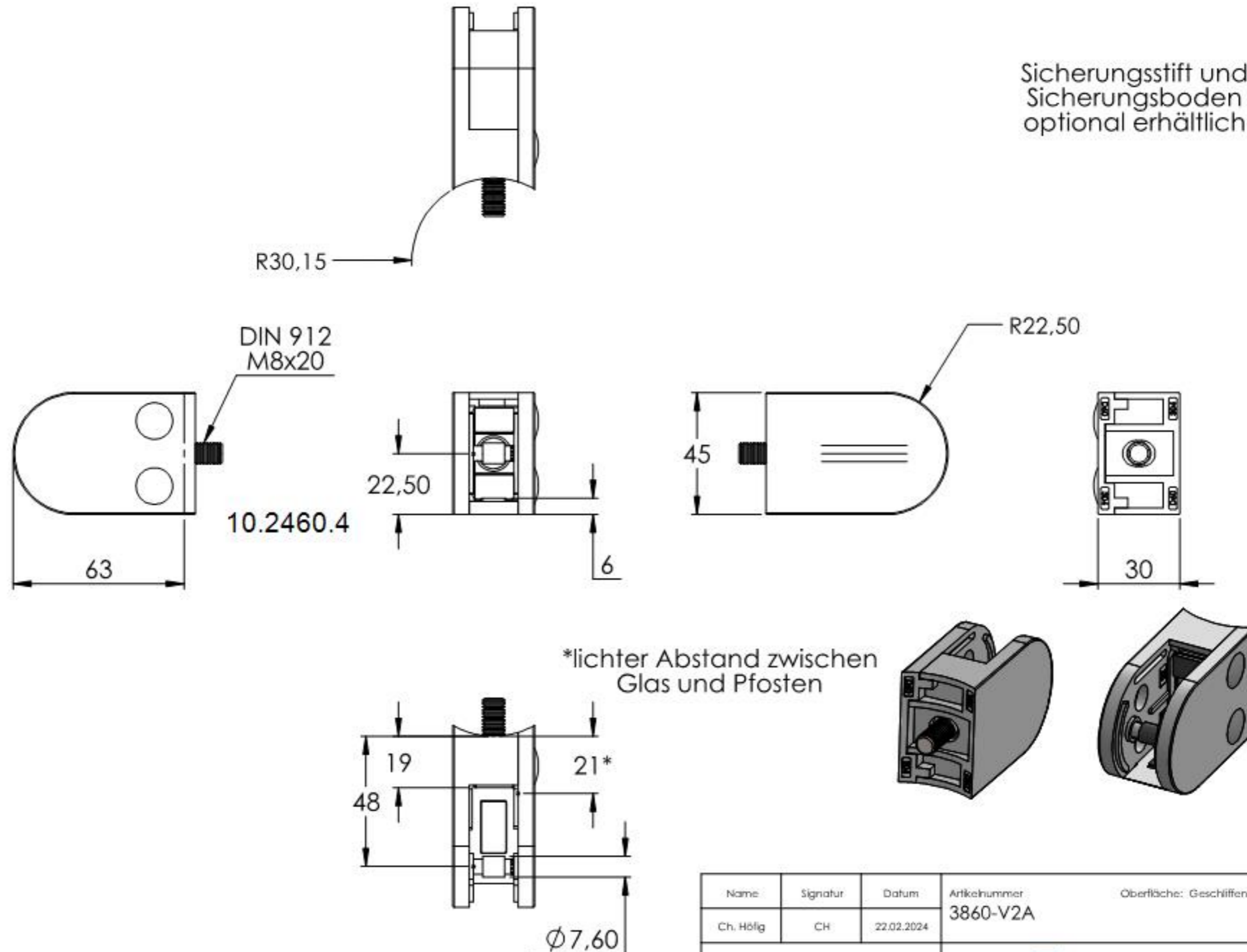
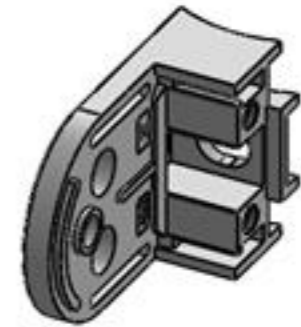
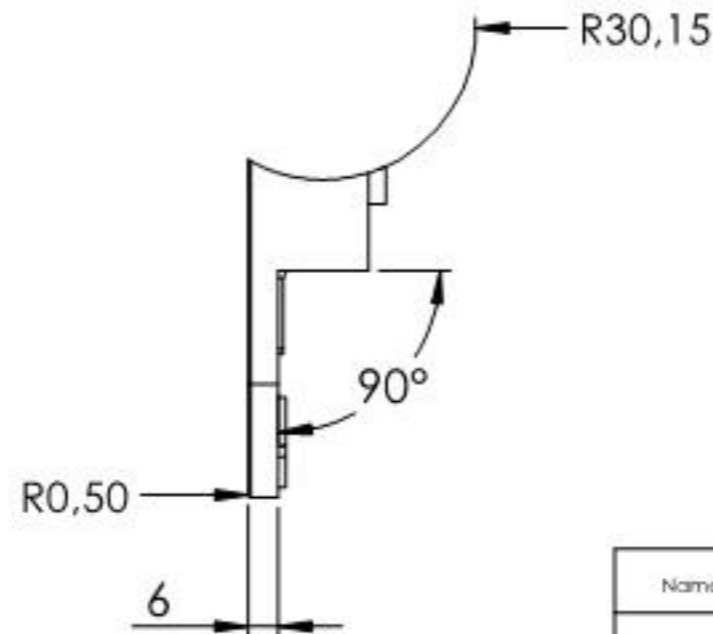
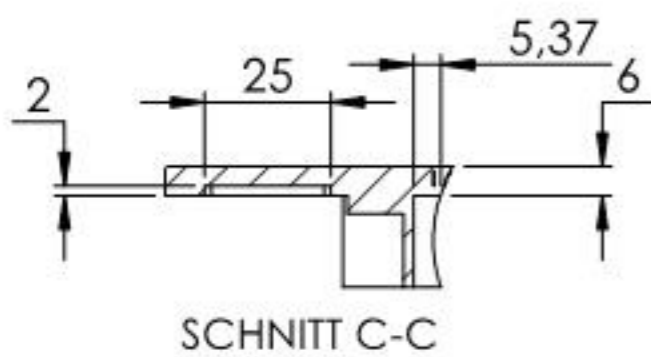
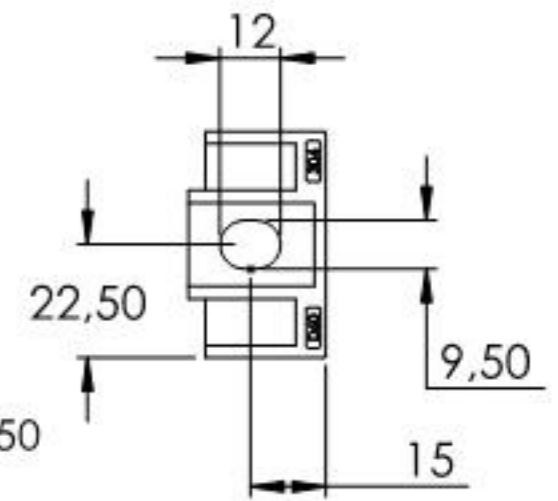
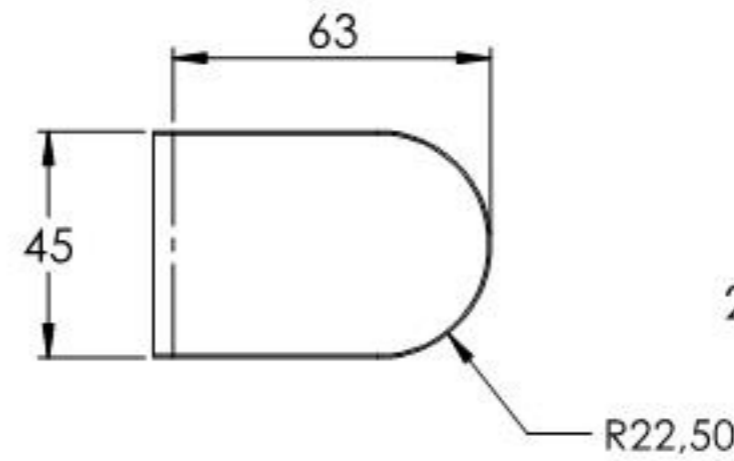
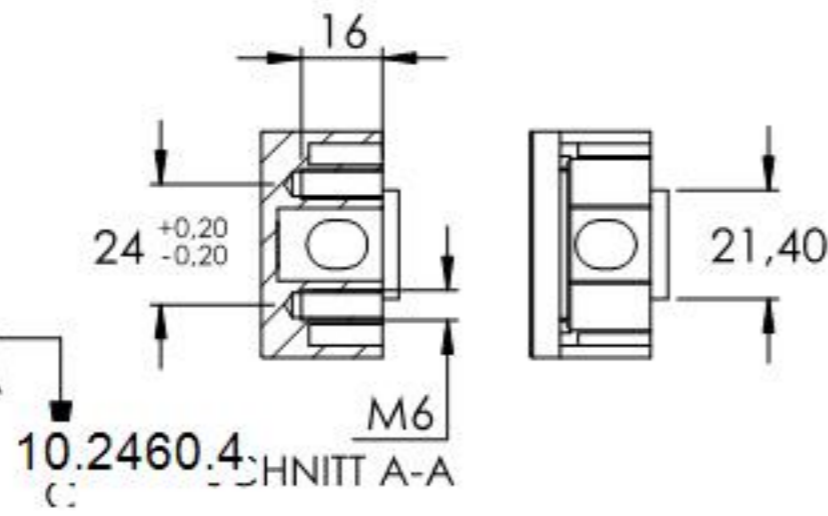
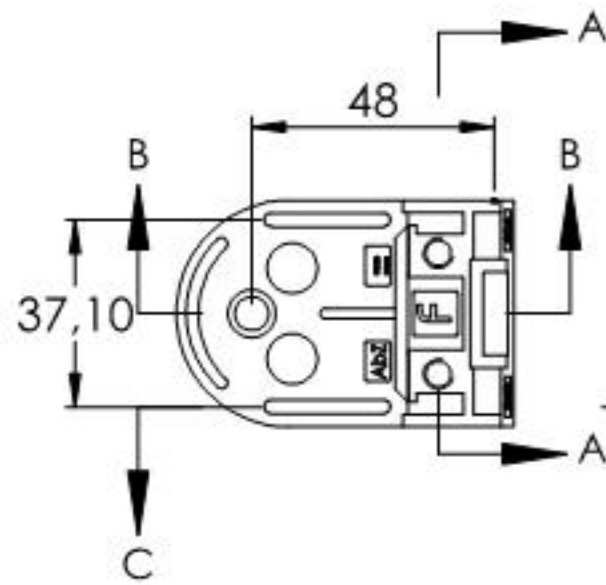
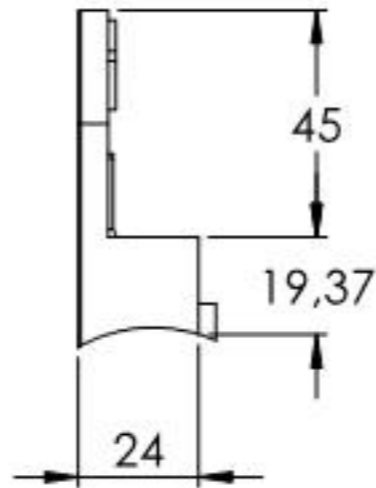
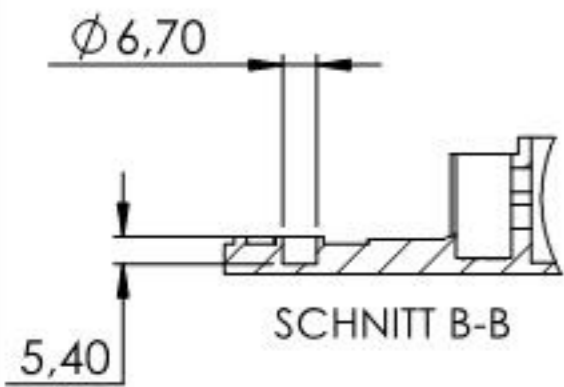


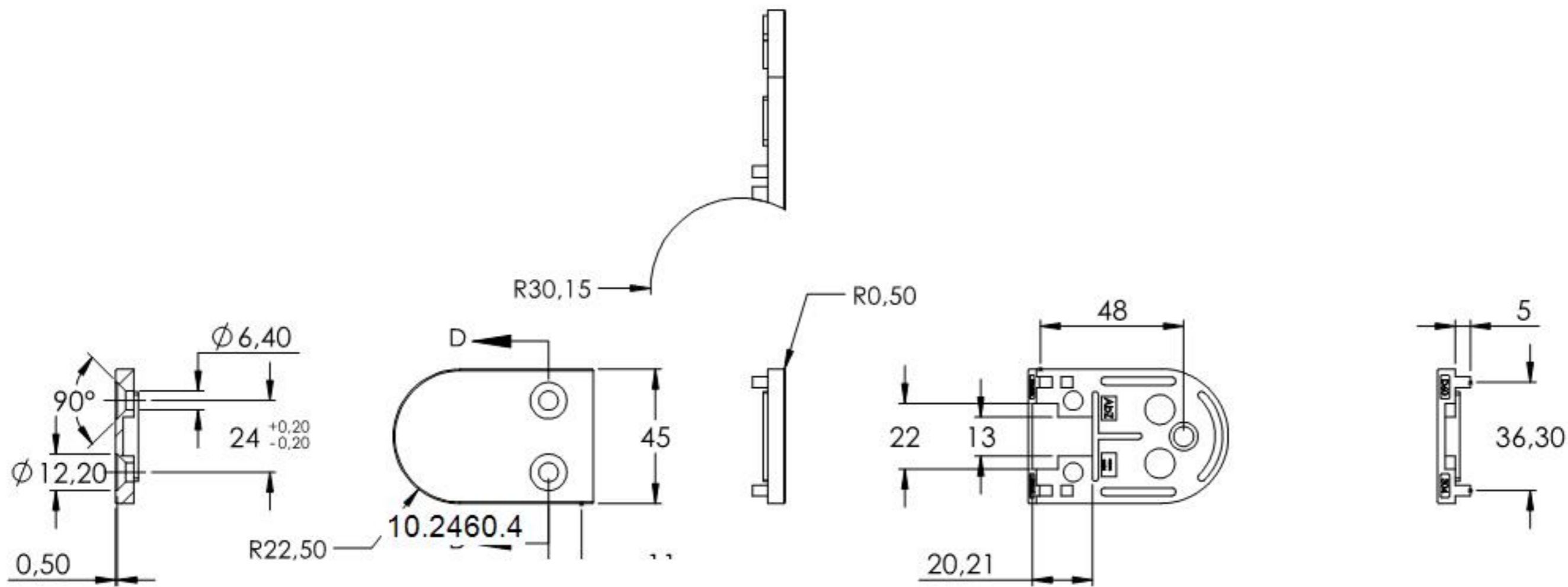
Sicherungsstift und Sicherungsboden optional erhältlich



Name	Signatur	Datum	Artikelnummer	Oberfläche: Geschliffen Kam 240	
Ch. Hölig	CH	22.02.2024	3860-V2A		
Werkstoff: 1.4301 (X5CrNi18-10)			Hersteller		Blattformat
					A4
Gewicht: 0.316 kg		Maßstab: 1:2	Version: 1	Deutsch	Blatt 1 von 8

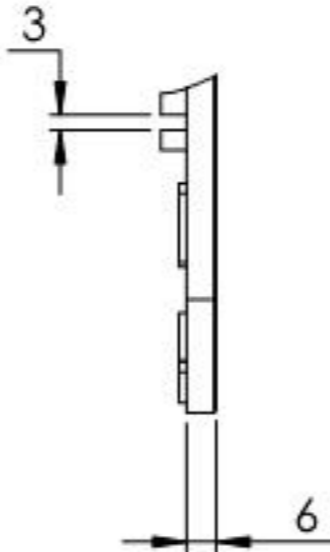


Name	Signatur	Datum	Artikelnummer	Oberfläche: Geschliffen Kam 240	
Ch. Hölfig	CH	22.02.2024	3860-V2A		
Werkstoff: 1.4301 (X5CrNi18-10)			Hersteller		Blattformat
					A4
Gewicht: 0.173 kg			Maßstab: 1:2	Version: 1	Deutsch Blatt 2 von 8



SCHNITT D-D

10.2460.4



Name	Signatur	Datum	Artikelnummer	Oberfläche: Geschliffen Kam 240	
Ch. Hölfig	CH	22.02.2024	3860-V2A		
Werkstoff: 1.4301 (X5CrNi18-10)			Hersteller		Blattformat
Gewicht: 0.112 kg			Maßstab: 1:2	Version: 1	Deutsch
			Blatt 3 von 8		
				A4	