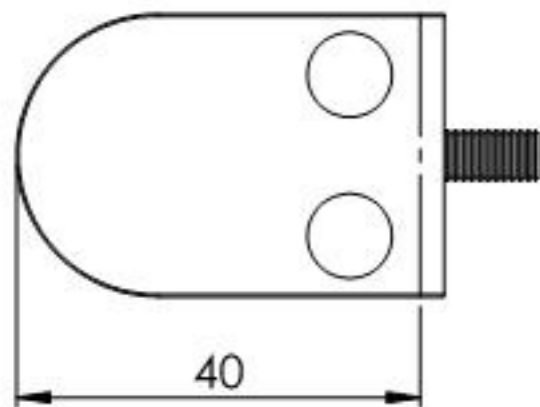
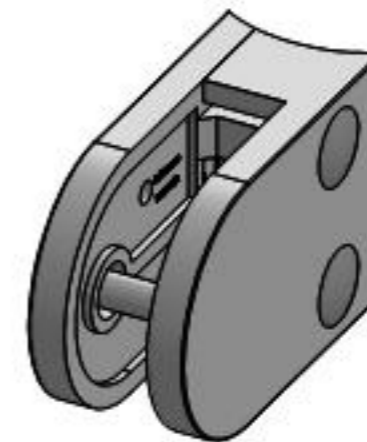
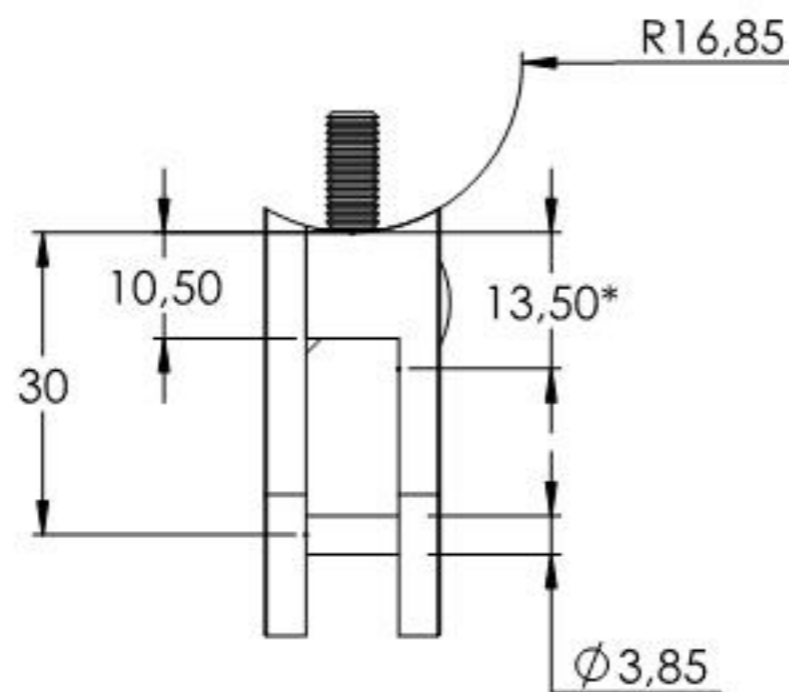
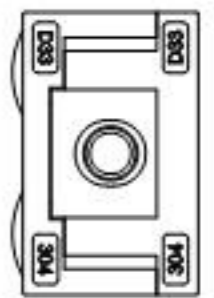
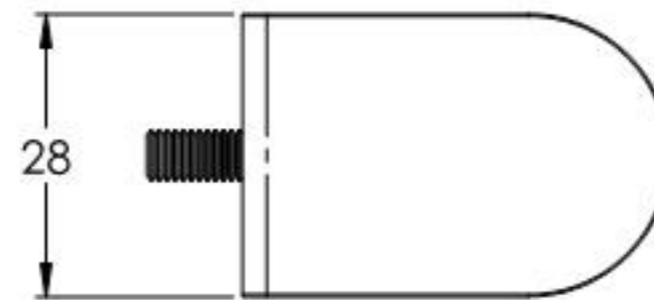
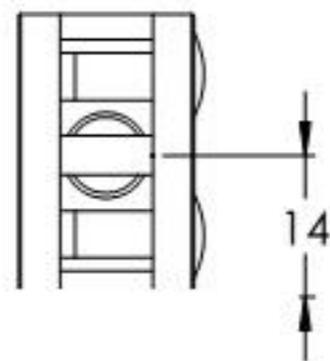


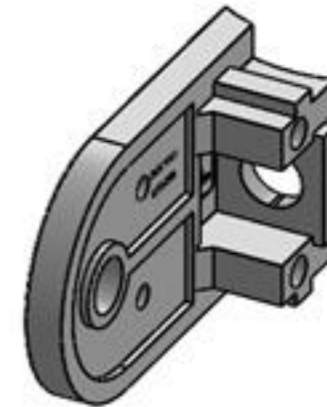
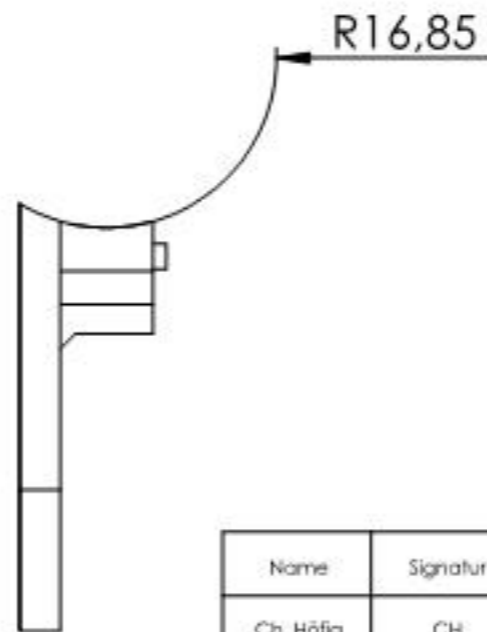
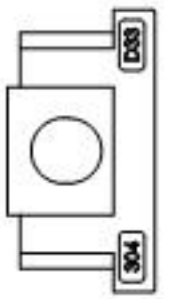
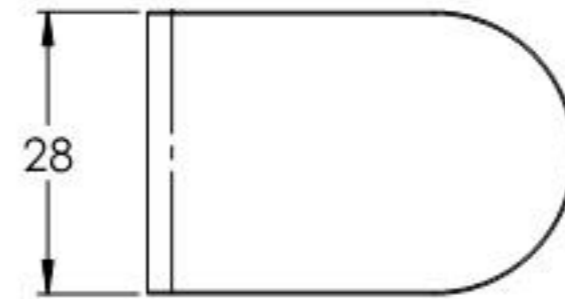
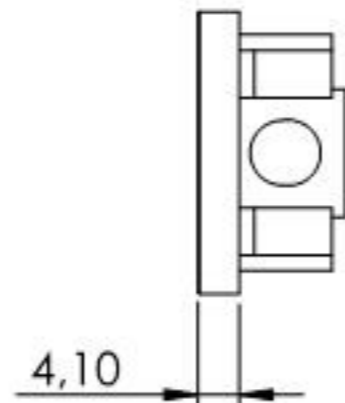
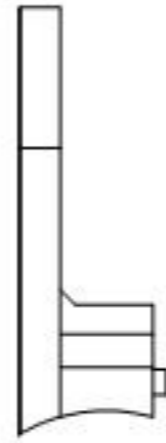
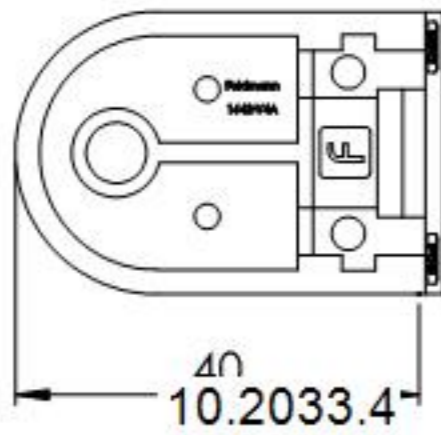
*lichter Abstand zwischen
Glas und Pfosten



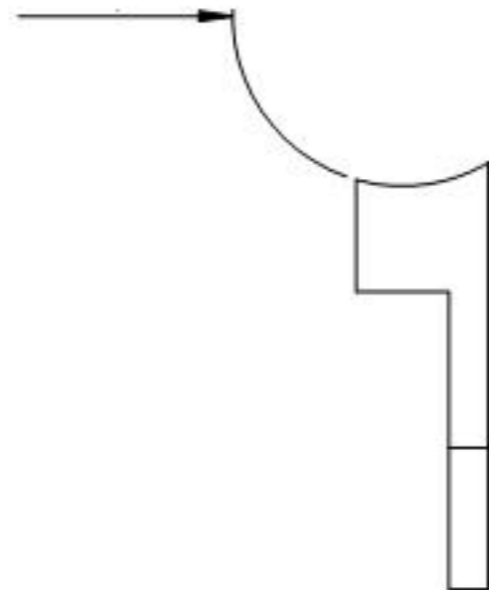
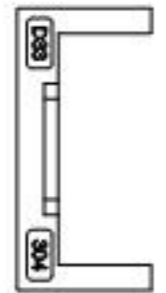
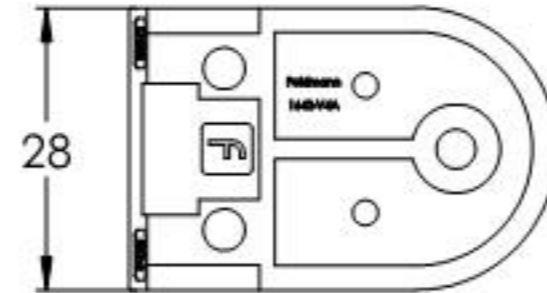
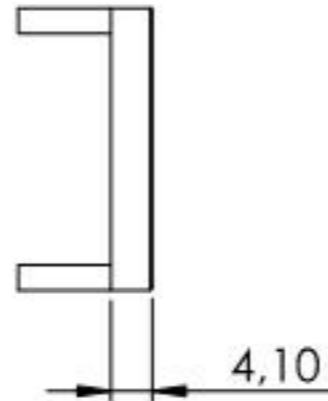
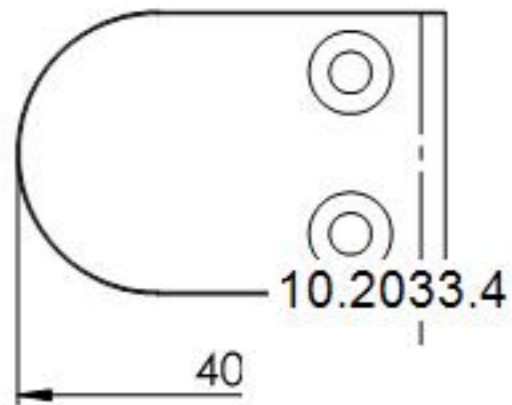
10.2033.4



Name	Signatur	Datum	Artikelnummer	Oberfläche: Geschliffen Korn 240
Ch. Höfig	CH	24.03.2020	1633-V2A	
Werkstoff: 1.4301 (X5CrNi18-10)		Hersteller  Feldmann EDLSTAHL-ALUMINIUM-SCHWEIßEISEN		Blattformat A4
Gewicht 0,072 kg		Maßstab: 1:1	Version: 1	Blatt 1 von 5



Name	Signatur	Datum	Artikelnummer	Oberfläche: Geschliffen Korn 240
Ch. Höfig	CH	24.03.2020	1633-V2A	
Werkstoff:		Hersteller		Blattformat
1.4301 (X5CrNi18-10)		 Feldmann <small>EDLSTAHL-ALUMINIUM-SCHWEIßEISEN</small>		A4
Gewicht 0,038 kg		Maßstab: 1:1	Version: 1	Blatt 2 von 5



Name	Signatur	Datum	Artikelnummer	Oberfläche: Geschliffen Korn 240
Ch. Höfig	CH	24.03.2020	1633-V2A	
Werkstoff:		Hersteller		Blattformat
1.4301 (X5CrNi18-10)		 <small>EDLSTAHLE · ALUMINIUM · SCHWEIßEISEN</small>		A4
Gewicht 0.032 kg		Maßstab: 1:1	Version: 1	Blatt 3 von 5