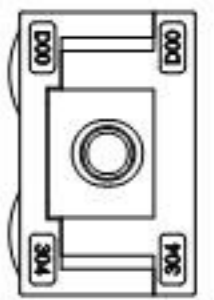
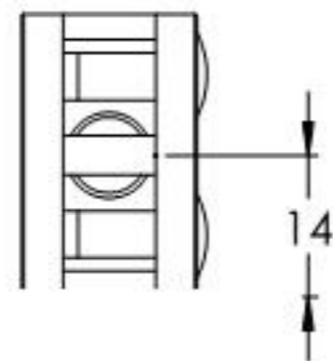
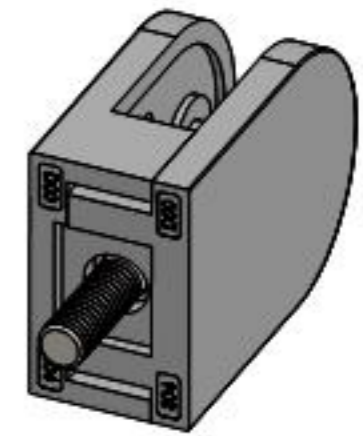
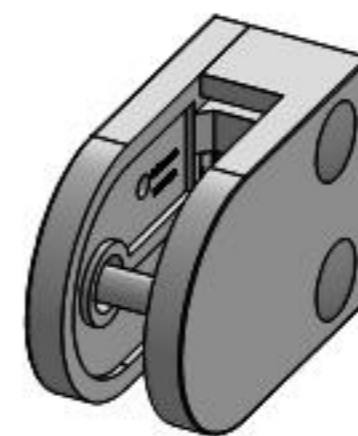
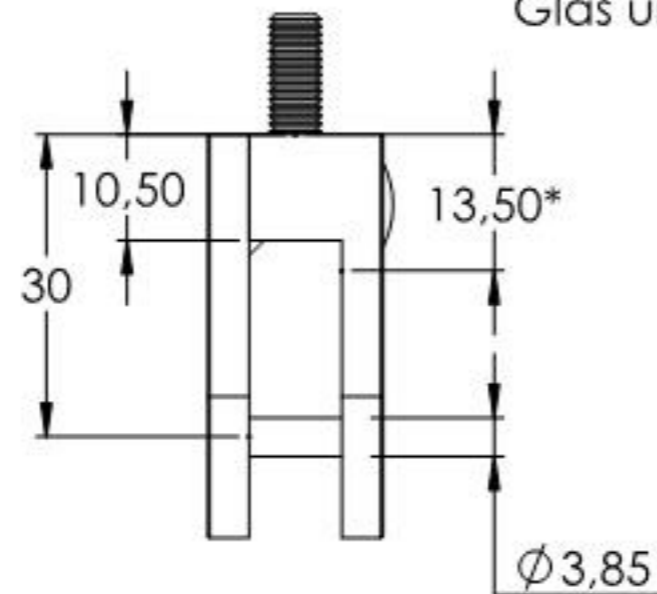


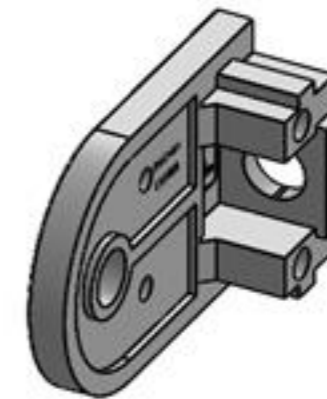
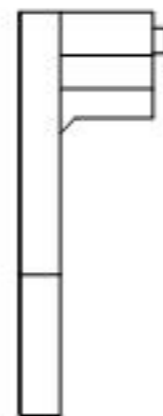
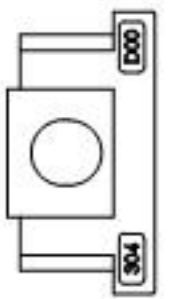
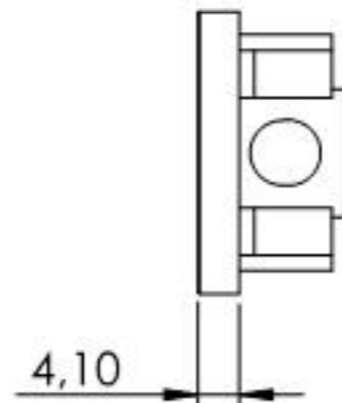
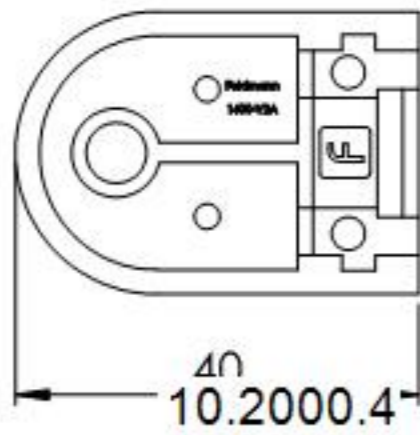
10.2000.4



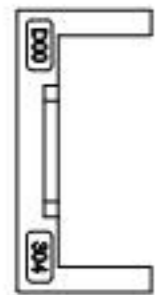
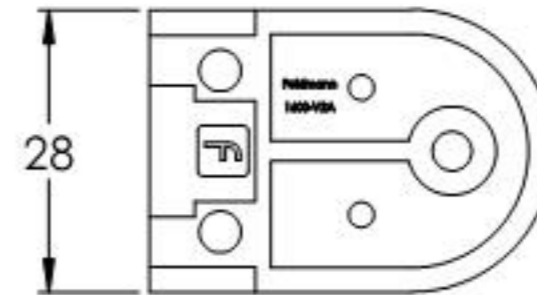
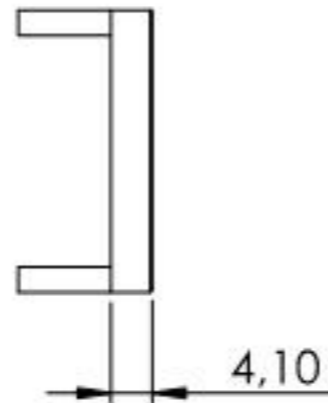
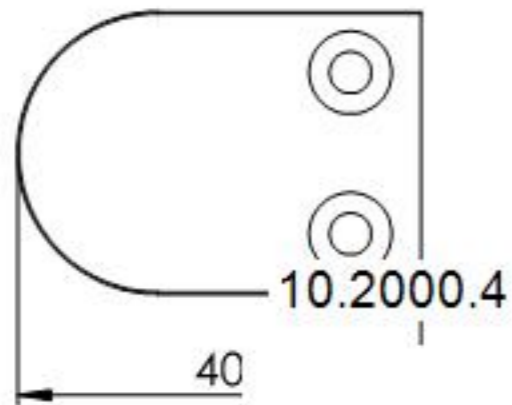
*lichter Abstand zwischen Glas und Pfosten



Name	Signatur	Datum	Artikelnummer	Oberfläche: Geschliffen Korn 240
Ch. Höfig	CH	24.03.2020	1600-V2A	
Werkstoff: 1.4301 (X5CrNi18-10)		Hersteller		Blattformat
		 Feldmann <small>EDLSTAHLE · ALUMINIUM · SCHWEIßEISEN</small>		A4
Gewicht 0,069 kg		Maßstab: 1:1	Version: 1	Blatt 1 von 5



Name	Signatur	Datum	Artikelnummer	Oberfläche: Geschliffen Korn 240
Ch. Höfig	CH	24.03.2020	1600-V2A	
Werkstoff:		Hersteller		Blattformat
1.4301 (X5CrNi18-10)				A4
Gewicht 0.037 kg		Maßstab: 1:1	Version: 1	Blatt 2 von 5



Name	Signatur	Datum	Artikelnummer	Oberfläche: Geschliffen Korn 240
Ch. Höfig	CH	24.03.2020	1600-V2A	
Werkstoff:		Hersteller		Blattformat
1.4301 (X5CrNi18-10)		 <small>EDLSTAHLE · ALUMINIUM · SCHWEIßEISEN</small>		A4
Gewicht 0,031 kg		Maßstab: 1:1	Version: 1	Blatt 3 von 5