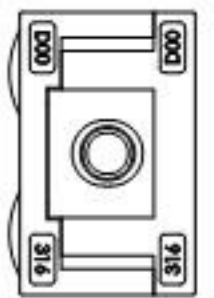
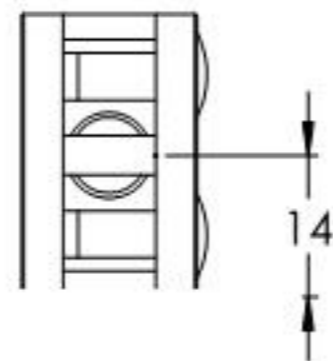
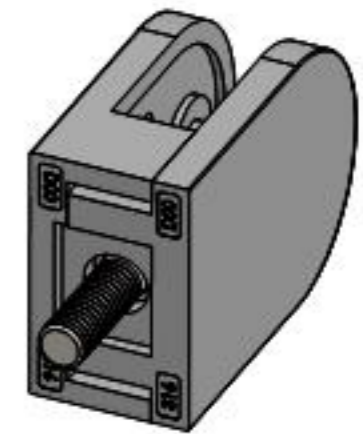
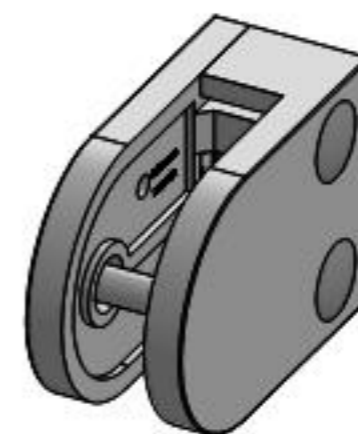
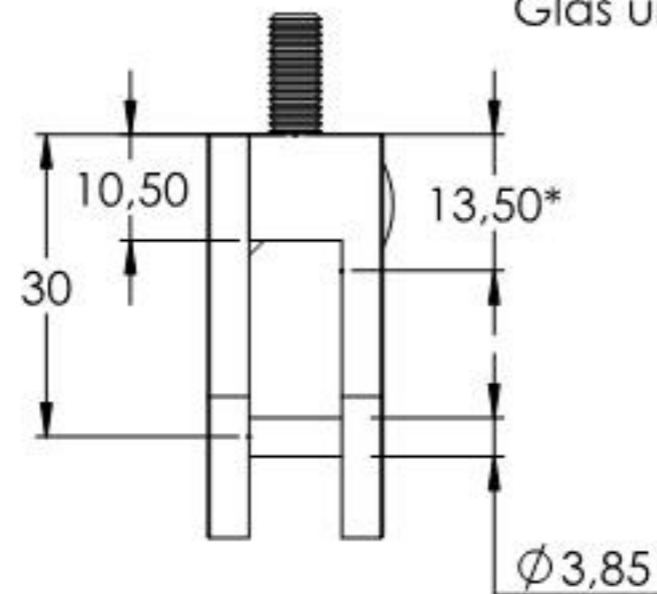


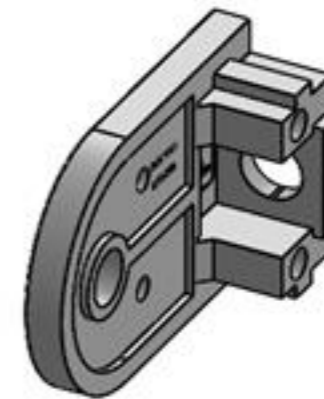
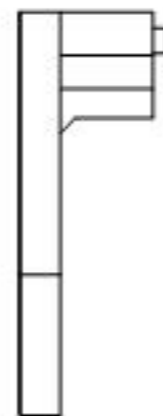
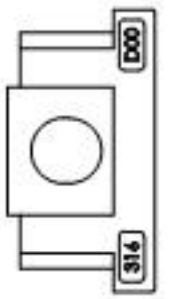
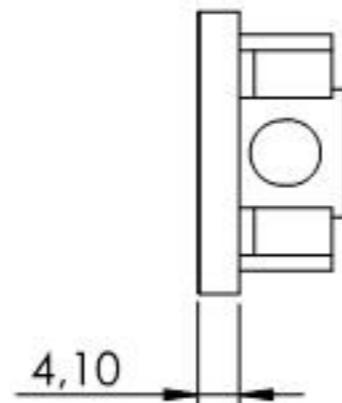
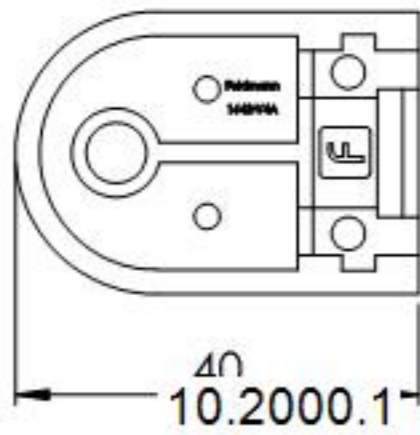
10.2000.1



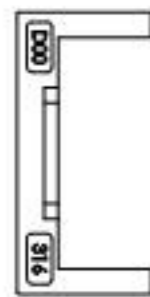
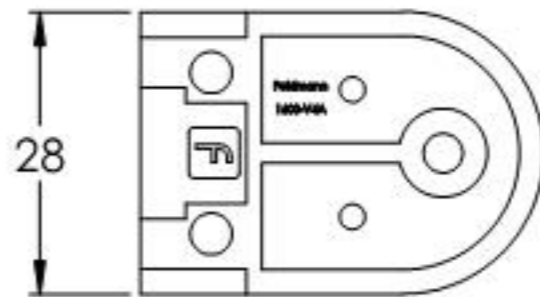
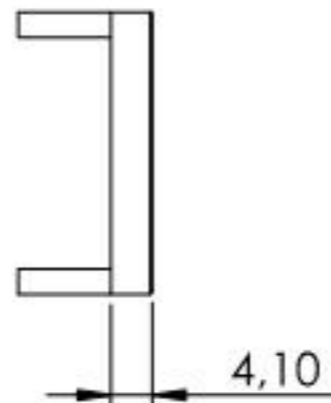
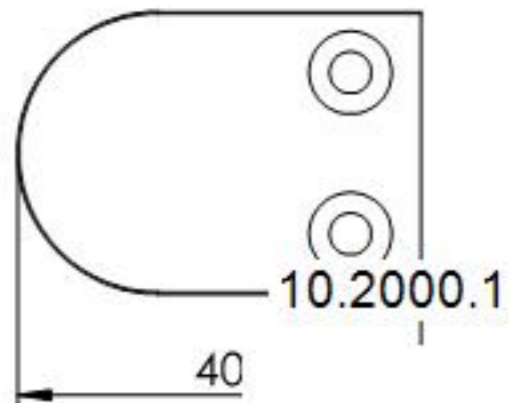
*lichter Abstand zwischen Glas und Pfosten



| | | | | | |
|---|----------|------------|---------------|---|---------------|
| Name | Signatur | Datum | Artikelnummer | Oberfläche: Geschliffen Korn 240 | |
| Ch. Höfig | CH | 24.03.2020 | 1600-V4A | | |
| Werkstoff: 1.4401/04 (X5CrNiMo17-12-2) | | | Hersteller |  Blattformat A4 | |
| Gewicht 0,070 kg | | | Maßstab: 1:1 | Version: 1 | Blatt 1 von 5 |



| | | | | |
|-----------------------------|----------|---|---------------|----------------------------------|
| Name | Signatur | Datum | Artikelnummer | Oberfläche: Geschliffen Korn 240 |
| Ch. Höfig | CH | 24.03.2020 | 1600-V4A | |
| Werkstoff: | | Hersteller | | Blattformat |
| 1.4401/04 (X5CrNiMo17-12-2) | |  <small>EDLSTAHL-ALUMINIUM-SCHWEIßEISEN</small> | | A4 |
| Gewicht 0.037 kg | | Maßstab: 1:1 | Version: 1 | Blatt 2 von 5 |



| | | | | |
|-----------------------------|----------|--|---------------|----------------------------------|
| Name | Signatur | Datum | Artikelnummer | Oberfläche: Geschliffen Korn 240 |
| Ch. Höfig | CH | 24.03.2020 | 1600-V4A | |
| Werkstoff: | | Hersteller | | Blattformat |
| 1.4401/04 (X5CrNiMo17-12-2) | |  <small>EDLSTAHLE · ALUMINIUM · SCHWEIßEISEN</small> | | A4 |
| Gewicht 0,031 kg | | Maßstab: 1:1 | Version: 1 | Blatt 3 von 5 |